

Low Loss 4.3-10 Male to N Female Bulkhead Cable Assembly using LMR-240 Coax, 10 FT with Times Microwave Components

## LCCA30269-FT10



### Configuration

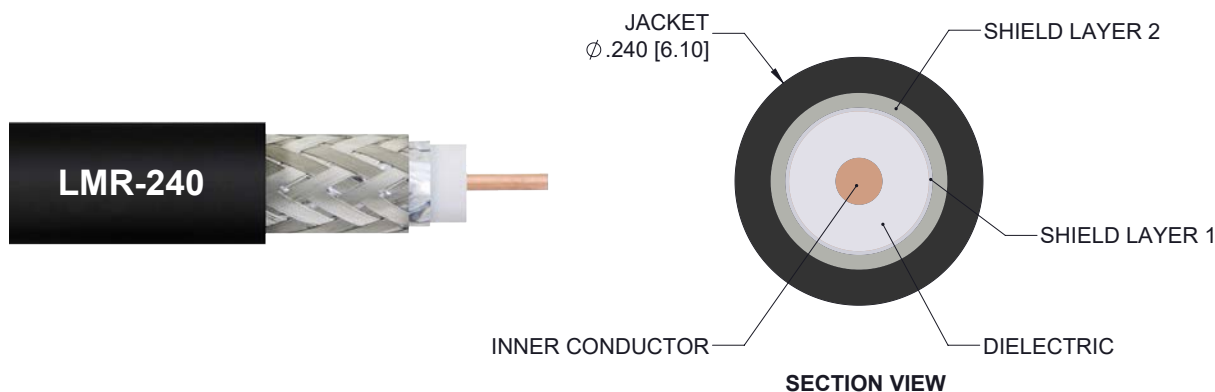
- Connector 1: 4.3-10 Male
- Connector 2: N Female Bulkhead
- Cable Type: LMR-240

### Features

- Using Times Microwave Components
- Max Frequency 5.8 GHz
- Shielding Effectivity > 90 dB
- 84% Phase Velocity
- PE Jacket
- Low Insertion Loss
- Bend Radius of 2.5 Inches

### Applications

- General Purpose
- Laboratory Use
- Antenna Installations
- Land Mobile Radio & Other Communication Systems
- Cellular & Wi-Fi Systems



### Description

L-com's LCCA30269-FT10 is a low loss 4.3-10 male to N female bulkhead cable assembly using LMR-240 coax, 10 FT with Times Microwave components and ships same-day. The LMR-240 coax of this 4.3-10 cable uses the PE (F) dielectric with a VoP of 84%, resulting in very low insertion loss compared to solid dielectrics. These flexible RF cable assemblies are ideal for applications where flexure is required. Our L-com 4.3-10 to N cable assembly has a male to female gender configuration with flexible LMR-240 series coax and operates to 5.8 GHz. The double shield of this 4.3-10 cable is layered by tinned copper braid over aluminum tape providing shielding effectiveness greater than 90dB. L-com's RF cable assembly with N bulkhead interface enables system designers to have external connections on their product enclosures or to be used for other rack mount and panel mount applications. \*LMR™ is a trademark of Times Microwave Systems.

Custom versions of this 4.3-10 male to 4.3-10 female cable, along with the rest of L-com's other RF assemblies, can also be built and shipped same day. Other available RF cable assembly value added services from L-com include connector orientation or clocking, heat shrink booting and custom labeling. RF testing can also be performed to document the electrical performance of your cable assembly. Contact a sales representative for testing or custom RF cable quotes. Part number LCCA30269-FT10 L-com Low Loss 4.3-10 Male to N Female Bulkhead Cable Assembly using LMR-240 Coax, 10 FT with Times Microwave Components data sheet PDF includes details of the RF product specifications, CAD drawing(s) and dimensions below.

Low Loss 4.3-10 Male to N Female Bulkhead Cable Assembly using LMR-240 Coax, 10 FT with Times Microwave Components



## LCCA30269-FT10

### Electrical Specifications

| Description                   | Minimum | Typical      | Maximum | Units                 |
|-------------------------------|---------|--------------|---------|-----------------------|
| Frequency Range               | DC      |              | 5.8     | GHz                   |
| Velocity of Propagation       |         | 84           |         | %                     |
| RF Shielding                  | 90      |              |         | dB                    |
| Group Delay                   |         | 1.21 [3.97]  |         | ns/ft [ns/m]          |
| Capacitance                   |         | 24.2 [79.4]  |         | pF/ft [pF/m]          |
| Inductance                    |         | 0.06 [0.2]   |         | uH/ft [uH/m]          |
| DC Resistance Inner Conductor |         | 3.2 [10.5]   |         | Ohms/1000ft [Ohms/Km] |
| DC Resistance Outer Conductor |         | 3.89 [12.76] |         | Ohms/1000ft [Ohms/Km] |
| Jacket Spark                  |         |              | 5,000   | Vrms                  |

### Specifications by Frequency

| Description           | F1   | F2   | F3   | F4   | F5   | Units |
|-----------------------|------|------|------|------|------|-------|
| Frequency             | 0.25 | 0.5  | 1    | 2.5  | 5.8  | GHz   |
| Insertion Loss (Typ.) | 0.59 | 0.75 | 0.99 | 1.48 | 2.24 | dB    |

#### Electrical Specification Notes:

The Insertion Loss data above is based on the performance specifications of the coax cable and connectors used in this assembly.  
The Insertion Loss includes an estimated insertion loss of 0.1 dB per connector

### Mechanical Specifications

#### Cable Assembly

Length 120 in [304.8 cm]

#### Cable

Cable Type LMR-240  
Impedance 50 Ohms  
Inner Conductor Type Solid  
Inner Conductor Material and Plating Copper  
Dielectric Type PE (F)  
Number of Shields 2  
Shield Layer 1 Aluminum Tape  
Shield Layer 2 Tinned Copper Braid  
Jacket Material PE, Black  
Jacket Diameter 0.24 in [6.1 mm]

Low Loss 4.3-10 Male to N Female Bulkhead Cable Assembly using LMR-240 Coax, 10 FT with Times Microwave Components



## LCCA30269-FT10

|                              |                        |
|------------------------------|------------------------|
| One Time Minimum Bend Radius | 0.75 in [19.05 mm]     |
| Repeated Minimum Bend Radius | 2.5 in [63.5 mm]       |
| Bending Moment               | 0.25 lbs-ft [0.34 N-m] |
| Flat Plate Crush             | 20 lbs/in [0.36 Kg/mm] |
| Tensile Strength             | 80 lbs [36.29 Kg]      |

### Connectors

| Description                          | Connector 1       | Connector 2            |
|--------------------------------------|-------------------|------------------------|
| Type                                 | 4.3-10 Male       | N Female Bulkhead      |
| Specification                        |                   | MIL-STD-348            |
| Impedance                            | 50 Ohms           | 50 Ohms                |
| Mating Cycles                        | 500               |                        |
| Contact Material and Plating         | Brass, Silver     | Beryllium Copper, Gold |
| Contact Plating Specification        | 200 µin thickness |                        |
| Dielectric Type                      | PTFE              | PTFE                   |
| Outer Conductor Material and Plating |                   | Brass, Tri-Metal       |
| Body Material and Plating            | Brass, Tri-Metal  | Brass, Tri-Metal       |
| Body Plating Specification           | 80 µin thickness  |                        |
| Coupling Nut Material and Plating    | Brass, Tri-Metal  |                        |
| Coupling Nut Plating Specification   | 80 µin thickness  |                        |

### Environmental Specifications

#### Temperature

|                 |                  |
|-----------------|------------------|
| Operating Range | -40 to +85 deg C |
| Storage Range   | -70 to +85 deg C |

**Compliance Certifications** (see [product page](#) for current document)

### Plotted and Other Data

Notes:

Low Loss 4.3-10 Male to N Female Bulkhead Cable Assembly using LMR-240 Coax, 10 FT with Times Microwave Components



## LCCA30269-FT10

### How to Order

Part Number Configuration:

**LCCA30269**

**- xx**

**uu**

Unit of Measure:  
cm = Centimeters  
<blank> = Inches  
Length  
Base Number

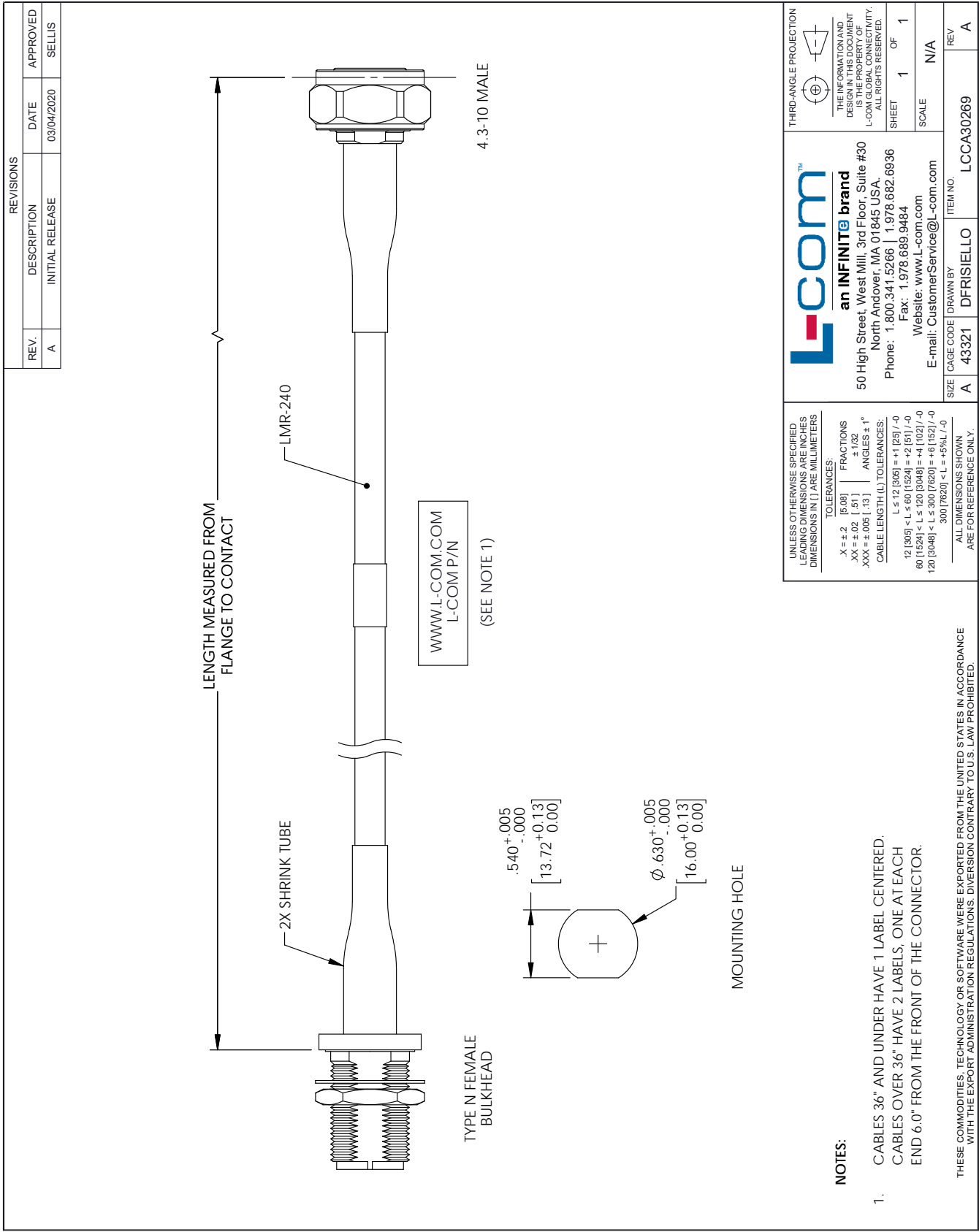
Example: LCCA30269-12 = 12 inches long cable  
LCCA30269-100cm = 100 cm long cable

Low Loss 4.3-10 Male to N Female Bulkhead Cable Assembly using LMR-240 Coax, 10 FT with Times Microwave Components from L-com has same day shipment for domestic and International orders. L-com is a leading manufacturer of wired and wireless connectivity products and committed to in-stock availability and same day shipping. Our portfolio includes coaxial cable assemblies, connectors, adapters and custom products as well as lightning and surge protectors, NEMA rated enclosures, and an RF product line which includes antennas, amplifiers, passive, and active components.

The information contained within this document is accurate to the best of our knowledge and representative of the part described herein. It may be necessary to make modifications to the part and/or the documentation of the part in order to implement improvements. L-com reserves the right to make such changes as required. Unless otherwise stated, all specifications are nominal. L-com does not make any representation or warranty regarding the suitability of the part described herein for any particular purpose, and L-com does not assume liability arising out of the use of any part or document contained within this document is accurate to the best of our knowledge and representative of the part described herein. It may be necessary to make modifications to the part and/or the documentation of the part in order to implement improvements. L-com reserves the right to make such changes as required. Unless otherwise stated, all specifications are nominal. L-com does not make any representation or warranty regarding the suitability of the part described herein for any particular purpose, and L-com does not assume liability arising out of the use of any part or document.

Low Loss 4.3-10 Male to N Female Bulkhead Cable Assembly using LMR-240 Coax, 10 FT with Times Microwave Components

L-com CAD Drawing



# Mouser Electronics

Authorized Distributor

Click to View Pricing, Inventory, Delivery & Lifecycle Information:

[infinite Electronics:](#)

[LCCA30269-FT10](#) [LCCA31202-FT1](#)