

## N Male Right Angle to N Female Bulkhead Cable Assembly using LC141TB Coax, 5 FT

### LCCA30082-FT5



#### Configuration

- Connector 1: N Male Right Angle
- Connector 2: N Female Bulkhead
- Cable Type: LC141TB

#### Features

- Max Frequency 11 GHz
- Shielding Effectivity > 100dB
- PTFE Dielectric with 69.9% VoP
- Hand Formable
- Tin Filled Copper Braid Outer Conductor

#### Applications

- General Purpose
- Laboratory Use
- System Interconnect



#### Description

L-com's LCCA30082-FT5 is a N male right angle to N female bulkhead cable assembly using LC141TB coax, 5 FT and ships same-day. The LC141TB coax of this N cable uses the PTFE dielectric with a VoP of 69.5%. These formable RF cable assemblies are a great alternative to expensive semi-rigid assemblies because they can be hand formed to fit specific designs. Our L-com N to N cable assembly has a male to female gender configuration with formable LC141TB series coax and operates to 11 GHz. The tinned copper braid outer conductor is easily formed by hand with an overall diameter of 0.141 inches and excellent shielding effectiveness greater than 110dB. L-com's RF cable assembly with N bulkhead interface enables system designers to have external connections on their product enclosures or to be used for other rack mount and panel mount applications. This right angle N cable interface on the LC141TB coax allows for easier connections in tight spaces.

Custom versions of this N male to N female cable, along with the rest of L-com's other RF assemblies, can also be built and shipped same day. Other available RF cable assembly value added services from L-com include connector orientation or clocking, heat shrink booting and custom labeling. RF testing can also be performed to document the electrical performance of your cable assembly. Contact a sales representative for testing or custom RF cable quotes. Part number LCCA30082-FT5 L-com N Male Right Angle to N Female Bulkhead Cable Assembly using LC141TB Coax, 5 FT data sheet PDF includes details of the RF product specifications, CAD drawing(s) and dimensions below.

N Male Right Angle to N Female Bulkhead Cable  
Assembly using LC141TB Coax, 5 FT

## LCCA30082-FT5



### Electrical Specifications

Description	Minimum	Typical	Maximum	Units
Frequency Range	DC		11	GHz
Velocity of Propagation		69.5		%
RF Shielding	110			dB
Capacitance		29.4 [96.46]		pF/ft [pF/m]
DC Resistance Inner Conductor		7.8 [25.59]		Ohms/1000ft [Ohms/Km]
DC Resistance Outer Conductor		5.5 [18.04]		Ohms/1000ft [Ohms/Km]
Operating Voltage (AC)			250	Vrms

### Specifications by Frequency

Description	F1	F2	F3	F4	F5	Units
Frequency	0.5	1	2.5	5	11	GHz
Insertion Loss (Max.)	0.6	0.8	1.12	1.65	2.58	dB

#### Electrical Specification Notes:

The Insertion Loss data above is based on the performance specifications of the coax cable and connectors used in this assembly.  
The Insertion Loss is estimated as 0.2 dB per right angle connector and 0.1 dB per straight connector.

### Mechanical Specifications

#### Cable Assembly

Length	60 in [152.4 cm]
Diameter	0.025 in [0.64 mm]

#### Cable

Cable Type	LC141TB
Impedance	50 Ohms
Inner Conductor Type	Solid
Inner Conductor Material and Plating	Copper, Silver
Dielectric Type	PTFE
Number of Shields	0
Outer Conductor Material and Plating	Tinned Copper Braid
Outer Conductor Diameter	0.141 in [3.58 mm]
Repeated Minimum Bend Radius	0.625 in [15.88 mm]

N Male Right Angle to N Female Bulkhead Cable  
Assembly using LC141TB Coax, 5 FT

## LCCA30082-FT5



### Connectors

Description	Connector 1	Connector 2
Type	N Male Right Angle	N Female Bulkhead
Impedance	50 Ohms	50 Ohms
Contact Material and Plating	Brass, Gold over Nickel	Phosphor Bronze, Gold over Nickel
Dielectric Type	PTFE	PTFE
Outer Conductor Material and Plating		Brass, Nickel
Body Material and Plating	Brass, Nickel	Brass, Nickel
Coupling Nut Material and Plating	Brass, Nickel	

### Environmental Specifications

#### Temperature

Operating Range -55 to +125 deg C

**Compliance Certifications** (see [product page](#) for current document)

### Plotted and Other Data

Notes:

- Values at 25°C, sea level.

N Male Right Angle to N Female Bulkhead Cable  
Assembly using LC141TB Coax, 5 FT

## LCCA30082-FT5



### How to Order

Part Number Configuration:

**LCCA30082**

- **xx**

**uu**

Unit of Measure:  
cm = Centimeters  
<blank> = Inches  
Length  
Base Number

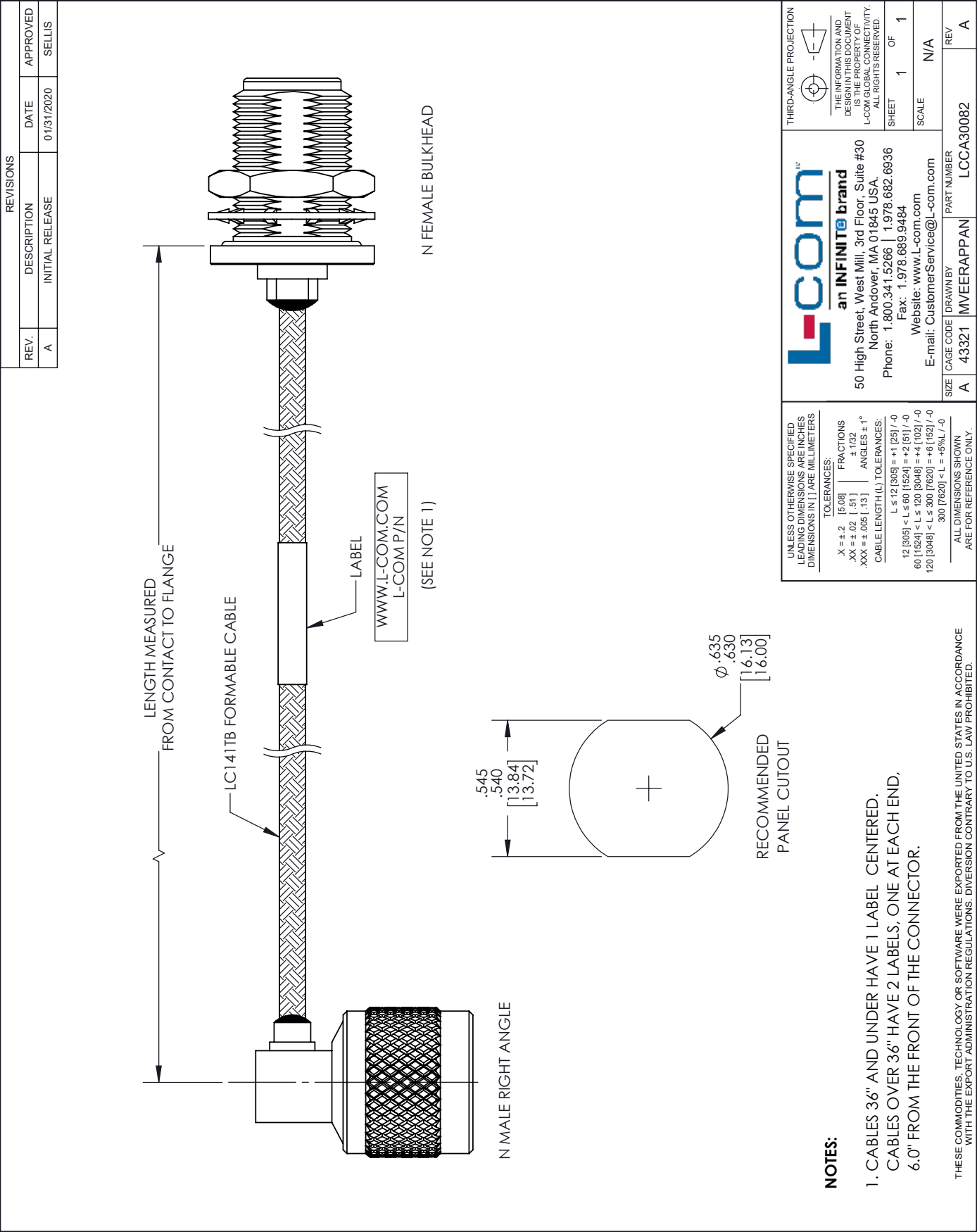
Example: LCCA30082-12 = 12 inches long cable  
LCCA30082-100cm = 100 cm long cable

N Male Right Angle to N Female Bulkhead Cable Assembly using LC141TB Coax, 5 FT from L-com has same day shipment for domestic and International orders. L-com is a leading manufacturer of wired and wireless connectivity products and committed to in-stock availability and same day shipping. Our portfolio includes coaxial cable assemblies, connectors, adapters and custom products as well as lightning and surge protectors, NEMA rated enclosures, and an RF product line which includes antennas, amplifiers, passive, and active components.

The information contained within this document is accurate to the best of our knowledge and representative of the part described herein. It may be necessary to make modifications to the part and/or the documentation of the part in order to implement improvements. L-com reserves the right to make such changes as required. Unless otherwise stated, all specifications are nominal. L-com does not make any representation or warranty regarding the suitability of the part described herein for any particular purpose, and L-com does not assume liability arising out of the use of any part or document contained within this document is accurate to the best of our knowledge and representative of the part described herein. It may be necessary to make modifications to the part and/or the documentation of the part in order to implement improvements. L-com reserves the right to make such changes as required. Unless otherwise stated, all specifications are nominal. L-com does not make any representation or warranty regarding the suitability of the part described herein for any particular purpose, and L-com does not assume liability arising out of the use of any part or document.

N Male Right Angle to N Female Bulkhead Cable Assembly using LC141TB Coax, 5 FT

L-com CAD Drawing



# Mouser Electronics

Authorized Distributor

Click to View Pricing, Inventory, Delivery & Lifecycle Information:

[infinite Electronics:](#)

[LCCA30082-FT5](#)