

902 to 928 MHz RFID Flat Panel Antenna, RHCP,
6 dBi, White ABS, SMA Female, IP65

LCANFP1031



Features

- High Performance Multi-tag read/write Capabilities
- Concealable Design
- Right Hand Circular Polarized
- 902 to 928 MHz Frequency Range
- SMA Female Connector
- IP65 Rated

Applications

- Radio Frequency Identification
- Inventory Management
- Access Control
- Data Collection
- Asset Tracking
- Livestock Management

Description

L-Com's LCANFP1031 is a RHCP RFID flat panel antenna. The LCANFP1031 with a 6 dBi gain nominal is a Directional antenna. Our 902 to 928 MHz antenna has SMA Female connector and is IP65 Rated.

With an impedance of 50 Ohms and max input power of 50 Watts, the LCANFP1031 flat panel RHCP antenna is well suited for Radio Frequency Identification tag reading applications. This 902-928 MHz 6 dBi gain RFID antenna is highly directional providing the reader radio the capabilities of simultaneously reading a multitude of RFID tags with a high degree of accuracy.

L-Com's RFID LCANFP1031 has a radome made of ABS in White color. This SMA Female connectized Antenna has an overall length of 5 in, width of 5 in, and weighs 1.001 lbs. Use our on-line ordering system to purchase your LCANFP1031 RFID Directional RHCP antenna 24 hours a day with same-day shipping and no MOQs (minimum order quantities).

Configuration

Design	Flat Panel
Application Band	RFID
Band Type	Single
Radiation Pattern	Directional
Polarization	RHCP
Connector Type	SMA Female
Lightning Protection	Direct Ground

Electrical Specifications

Description	Minimum	Typical	Maximum	Units
Frequency Range	902		928	MHz
Input VSWR			1.3:1	
Impedance		50		Ohms
Gain		6		dBi
Horizontal (Azimuth) HPBW		106		Degrees
Vertical (Elevation) HPBW		106		Degrees
Input Power			50	Watts

Click the following link (or enter part number in "SEARCH" on website) to obtain additional part information including price, inventory and certifications:
[902 to 928 MHz RFID Flat Panel Antenna, RHCP, 6 dBi, White ABS, SMA Female, IP65 LCANFP1031](#)

902 to 928 MHz RFID Flat Panel Antenna, RHCP,
6 dBi, White ABS, SMA Female, IP65



LCANFP1031

Axial Ratio	2	dB
-------------	---	----

Mechanical Specifications

Radome Material	ABS
Size	
Length	5 in [127 mm]
Width	5 in [127 mm]
Height	0.7 in [17.78 mm]
Weight	0.5 lbs [226.8 g]

Environmental Specifications

Temperature	
Operating Range	-40 to +55 deg C
Ingress Protection	IP65

Compliance Certifications (see [product page](#) for current document)

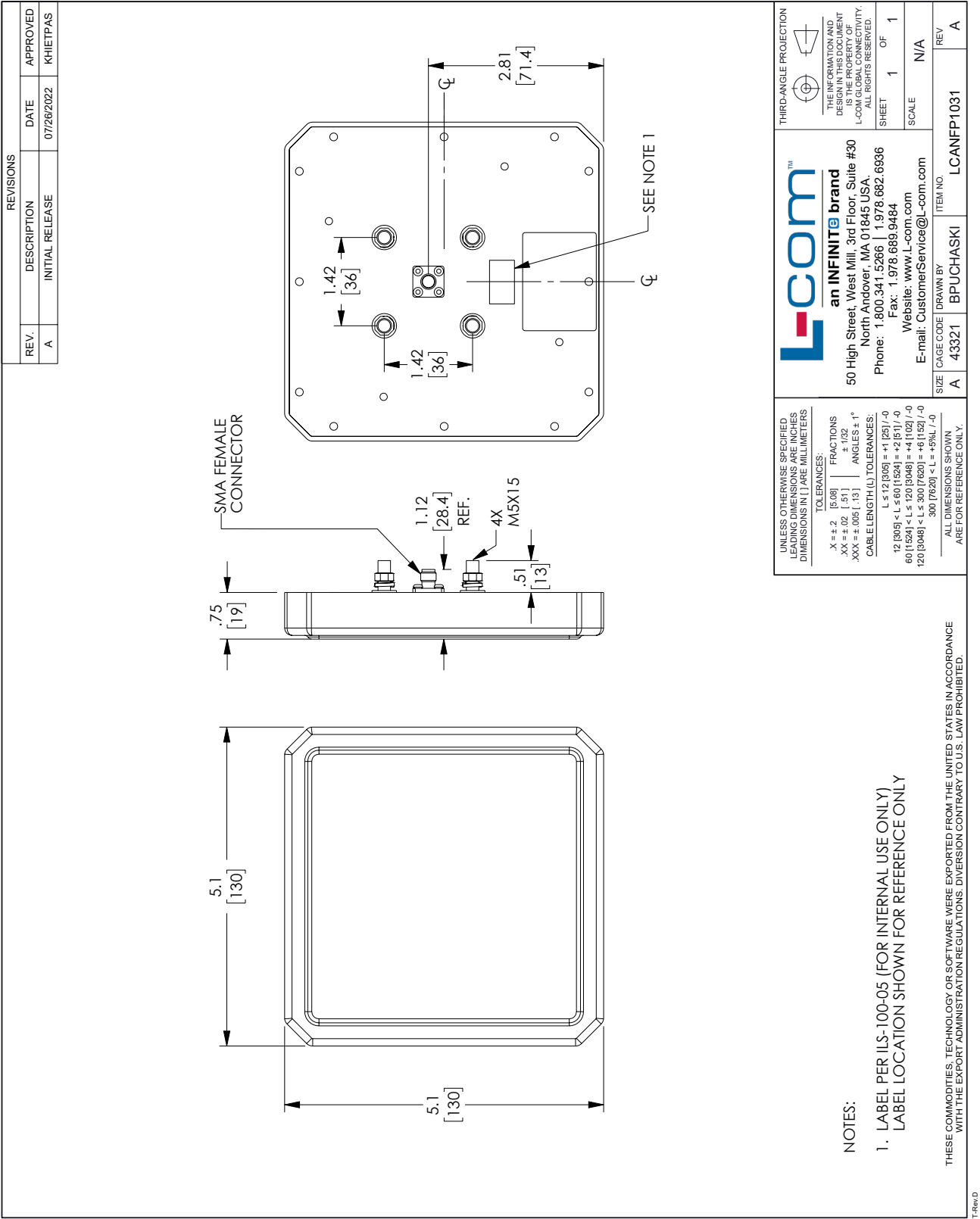
Plotted and Other Data

Notes:

902 to 928 MHz RFID Flat Panel Antenna, RHCP, 6 dBi, White ABS, SMA Female, IP65 from L-com has same day shipment for domestic and International orders. Our portfolio includes coaxial cable assemblies, connectors, adapters and custom products as well as lightning and surge protectors, NEMA rated enclosures, and an RF product line which includes antennas, amplifiers, passive, and active components.

The information contained within this document is accurate to the best of our knowledge and representative of the part described herein. It may be necessary to make modifications to the part and/or the documentation of the part in order to implement improvements. L-com reserves the right to make such changes as required. Unless otherwise stated, all specifications are nominal. L-com does not make any representation or warranty regarding the suitability of the part described herein for any particular purpose, and L-com does not assume liability arising out of the use of any part or document.

L-com CAD Drawing



Mouser Electronics

Authorized Distributor

Click to View Pricing, Inventory, Delivery & Lifecycle Information:

[L-Com:](#)

[CCS188A-1](#)