

Fiber EDFA 1550nm Booster Amplifier, 1 FC port, 78 channels, 15dBm



FOEDFA55BA1FC78C-15

Features

- High performance Erbium Doped Fiber Amplifier
- 1550nm optical amplifier
- Low noise pump laser
- Built-in perfect embedded automatic monitoring system

Applications

- CATV networks
- Long-distance optical fiber transmission of TV image signal
- Digital television signal
- Telephone voice signal
- Compressed data transmission

Description

The L-com FOEDFA55BA1FC78C-15 series is a 1550nm Erbium Doped Fiber Amplifiers with 1-FC port, 78 channels and 15dBm optical power. The L-com FOEDFA55BA1FC78C-15 Boosted EDFA is an important optical relay transmission equipment in 1550nm optical fiber communication system. The FOEDFA55BA1FC78C-15 product mainly used for the long-distance optical fiber transmission of TV image signal, digital television signal, telephone voice signal and data (or compressed data) signal. The L-com FOEDFA55BA1FC78C-15 product uses the high-performance erbium doped fiber and low noise pump laser, and built in perfect embedded automatic monitoring system, to ensure an excellent performance indicators. The FOEDFA55BA1FC78C-15 is one of thousands of fiber optic connectivity products available from L-com, in-stock and ready to ship. Contact our knowledgeable technical support and sales staff for your answers on fiber optic connectivity or other L-com products.

Configuration

Connector Type

FC, SC or LC

Filter Specifications

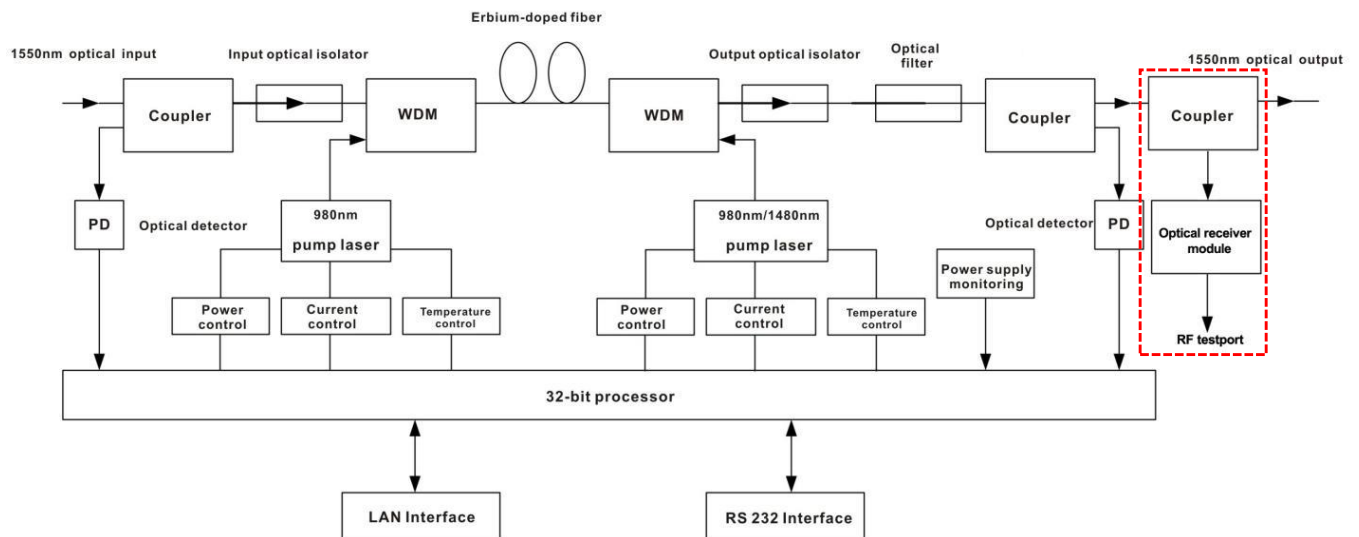
Description	Minimum	Typical	Maximum	Units
Operating Bandwidth	1,545		1,565	nm
Input Optical Power	-5		10	dBm
Output Optical Power	13		26	dBm
Output Power Stability		0.5		dBm
Noise Figure	5			dB
RF Test Port		78		dBuV
RF Test Port Variation		2		dBuV
Input Return Loss		45		dB
Output Return Loss		45		dB
Input Pump Leakage Power		-30		dBm
Output Pump Leakage Power		-30		dBm
AC Power Supply Voltage	100		250	V
DC Power Supply Voltage		48		V
Consumption		30		W

Click the following link (or enter part number in "SEARCH" on website) to obtain additional part information including price, inventory and certifications:
[Fiber EDFA 1550nm Booster Amplifier, 1 FC port, 78 channels, 15dBm FOEDFA55BA1FC78C-15](#)

Fiber EDFA 1550nm Booster Amplifier, 1 FC port, 78 channels, 15dBm



FOEDFA55BA1FC78C-15



Note: The dashed box in the figure is optional.

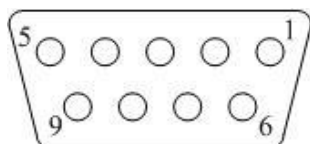
Fiber EDFA 1550nm Booster Amplifier, 1 FC port, 78 channels, 15dBm



FOEDFA55BA1FC78C-15

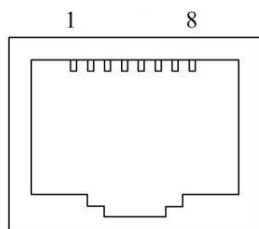
- 1) RS232 communication interface adopts DB9 standard connector, the pin definitions as follow:

The serial communication uses the standard NRZ form, 1 starts bit, 8 data bits, 1 stop bit and the baud rate is 38400.



1: No Connect	2: TX	3: RX
4: No Connect	5: GND	6: No Connect
7: No Connect	8: No Connect	9: No Connect

- 2) LAN communication interface adopts RJ45 standard connector, the pin definitions as follow:



LAN

1: TX+	2: TX-	3: RX+
4: No Connect	5: No Connect	6: RX-
7: No Connect	8: No Connect	

Size

Length	15.75 in
Width	19.02 in
Height	1.73 in

Environmental Specifications

Temperature

Operating Range	-5 to +55 deg C
Storage Range	-30 to +70 deg C

Operating Relative Humidity	95 %
Storage Relative Humidity	95 %

Compliance Certifications (see [product page](#) for current document)

Plotted and Other Data

Notes:

Fiber EDFA 1550nm Booster Amplifier, 1 FC port, 78 channels, 15dBm



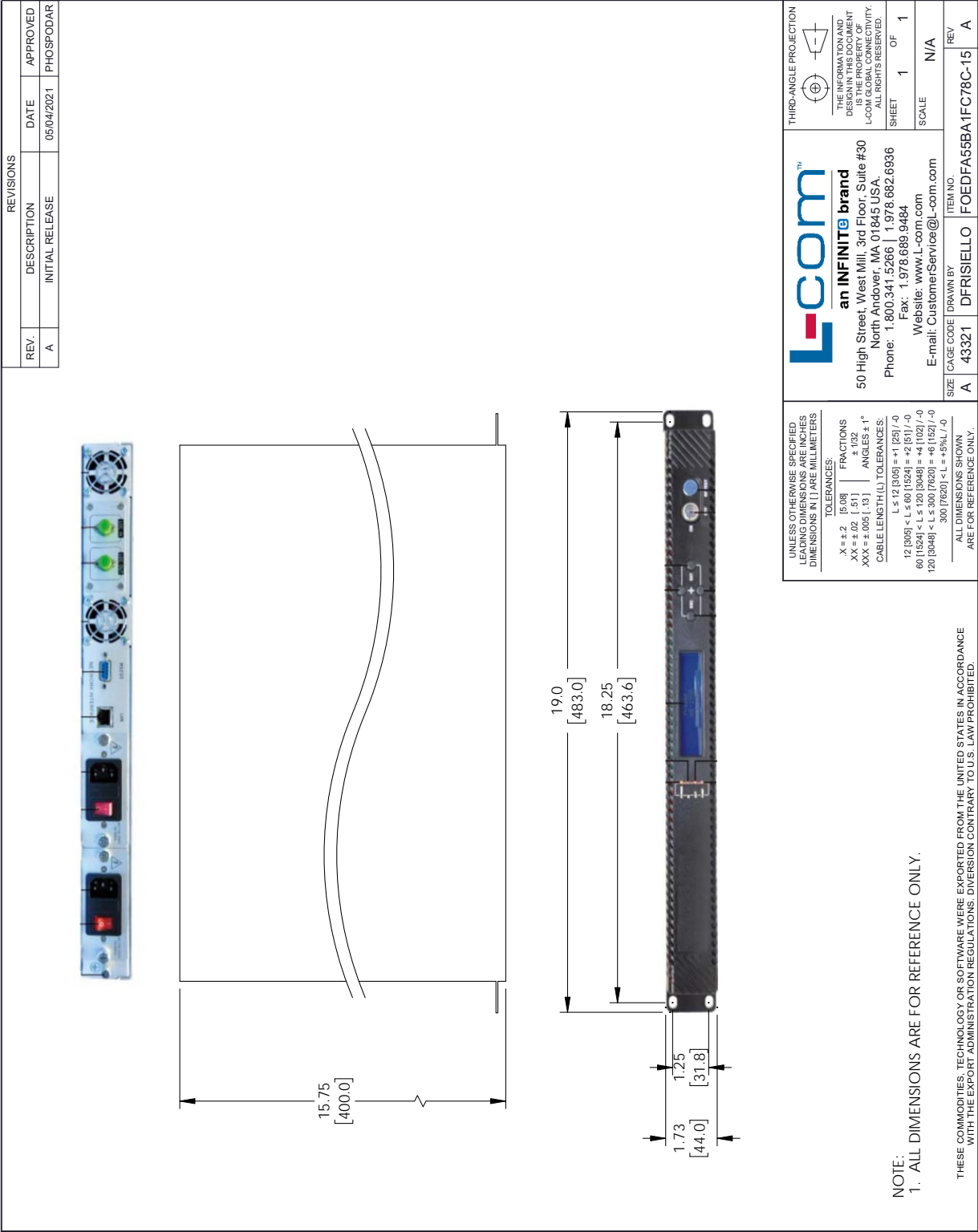
FOEDFA55BA1FC78C-15

Fiber EDFA 1550nm Booster Amplifier, 1 FC port, 78 channels, 15dBm from L-com has same day shipment for domestic and International orders. Our portfolio includes coaxial cable assemblies, connectors, adapters and custom products as well as lightning and surge protectors, NEMA rated enclosures, and an RF product line which includes antennas, amplifiers, passive, and active components.

The information contained within this document is accurate to the best of our knowledge and representative of the part described herein. It may be necessary to make modifications to the part and/or the documentation of the part in order to implement improvements. L-com reserves the right to make such changes as required. Unless otherwise stated, all specifications are nominal. L-com does not make any representation or warranty regarding the suitability of the part described herein for any particular purpose, and L-com does not assume liability arising out of the use of any part or document.

Fiber EDFA 1550nm Booster Amplifier, 1 FC port, 78 channels, 15dBm

L-com CAD Drawing



Mouser Electronics

Authorized Distributor

Click to View Pricing, Inventory, Delivery & Lifecycle Information:

[L-Com:](#)

[NBPC141206-1HFS-UL](#)