



ADDERLINK *i*peps

The AdderLink *i*peps product is part of the Adder's '*i*peps' (IP Engine per Server) concept that delivers a complete, secure, non-blocking approach to computer management.

A powerful and flexible KVM-via-IP product contained within a palm sized unit, the AdderLink *i*peps enables computer access from anywhere in the world, securely and remotely via the Internet or corporate network. The AdderLink *i*peps uses Real VNC client software that is specifically designed for secure, high performance KVM-via-IP applications.

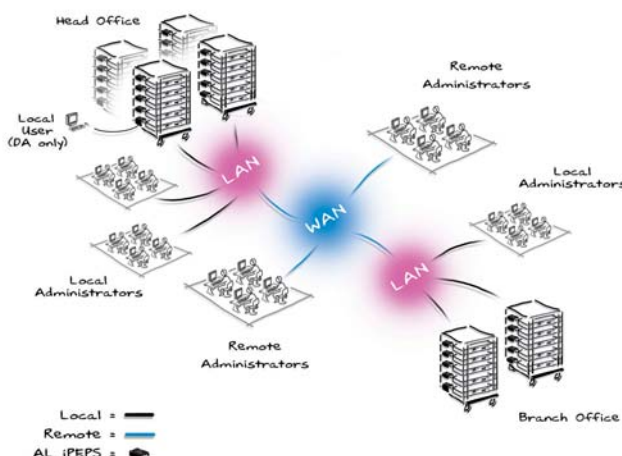
Despite its small size, there is no compromise in the performance of the AdderLink *i*peps. By using Adventiq Inside® on-chip KVM-via-IP technology, an extremely high performance solution can be contained in a compact unit.



For Enterprise KVM solutions the AdderLink *i*peps provides a non-blocking global solution by providing each computer with a dedicated KVM-via-IP engine. This can be enhanced by using the ADDER.NET Enterprise Management Software that provides a centralised and secure user access management interface.

Where a KVM switch exists without KVM-via-IP functionality, the AdderLink *i*peps is ideal for adding global management capabilities.

Increasing numbers of computers are being used in remote, stand alone applications such as ATMs and digital signage play out devices. The incredibly small size of the AdderLink *i*peps makes it perfect for remote management and control of dispersed computers, meaning that many tasks that would have required an expensive site visit can now be done from anywhere.



FEATURES

Independent operation

Gives full control even during boot up, BIOS level or computer crash states. The AdderLink *i*peps will work even if the controlled devices are not operational.

High video performance

The AdderLink *i*peps can use a standard web browser but for superior graphical performance, Real VNC is used. Free of the limitations of HTTPS, Real VNC greatly enhances video performance.

Highly secure

Employing enterprise grade security (using AES 128 bit encryption and RSA 2048 bit public key authentication) as standard, the AdderLink *i*peps is further enhanced by the use of Real VNC that allows for the creation of ciphered user communications.

User management

Knowing who does what and when is crucial for any remote access service. The AdderLink *i*peps can create up to 16 user profiles with defined access rights.

Global user control and access management

Where many AdderLink *i*peps devices are used it is important that user access to devices is both secure and quick. Optional ADDER.NET Enterprise Management Software allows for an unlimited number of devices to be seen and accessed at the click of a button. Unlimited user profiles are also supported with optional LDAP integration.

Virtual media support

To transfer files from remote users to controlled computers, the AdderLink *i*peps has been engineered to act as a conduit through which data can be passed. Files can be transferred via IP on to the AdderLink *i*peps and on to the target computer by means of a USB virtual media port.

The AdderLink *i*peps product is part of the Adder's '*i*peps' (IP Engine per Server) concept that delivers a complete, secure, non-blocking approach to computer management.

TECHNICAL SPECIFICATIONS

Video resolutions	Supports standard PC, Sun and Mac video modes up to resolutions of 1280 x 1024 with scalable viewer
Hardware compatibility	Supports PC, RS/6000, Alpha, SGI computers, Sun and Mac. USB or PS/2 connections supported. Compatible with most KVM switches
O/S compatibility	All known software and operating systems including Windows (all), DOS, Linux, Unix, BSD, Sun OS, Solaris, Mac OS, NetWare etc.
AdderLink <i>i</i>peps to KVM/computer connection	Video: HDD15, Keyboard/Mouse: MiniDIN6 1m 3-in-1 cable supplied (USB converters also included)
Local console (DA model only)	Video: HDD15, Keyboard/Mouse: MiniDIN6
Connections	Ethernet: RJ45 10/100 autosensing
Physical design	Compact case, robust metal construction. <i>i</i>peps 120mm/4.72" (w), 27mm/1.06" (h), 75mm/2.95" (d), 0.34kg/0.76lbs. <i>i</i>peps DA 120mm/4.72" (w), 42mm/1.65" (h), 75mm/2.95" (d), 0.46kg/1.02lbs. 16 or 8 (DA) per 2U. Rack mount kits available (X-RMK plus relevant fascia plate)
Power supply	100-240VAC, 47/63Hz
Operating temperature	0°C to 40°C / 32°F to 104°F
Approvals	CE, FCC

Local, Remote and Global Computer Control



ADDER CORPORATION

29 Water Street, Newburyport, MA 01950 USA
 Tel: +1 888 932 3337 Fax: +1 888 275 1117
 email: usasales@adder.com www.adder.com

ADDER TECHNOLOGY LIMITED

Technology House, Trafalgar Way, Bar Hill, Cambridge, CB23 8SQ UK
 Tel: +44 (0)1954 780044 Fax: +44 (0)1954 780081
 email: sales@adder.com www.adder.com



Mouser Electronics

Authorized Distributor

Click to View Pricing, Inventory, Delivery & Lifecycle Information:

[infinite Electronics:](#)

[HG2458-3SDC-3NF](#)