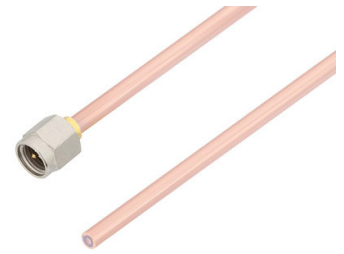


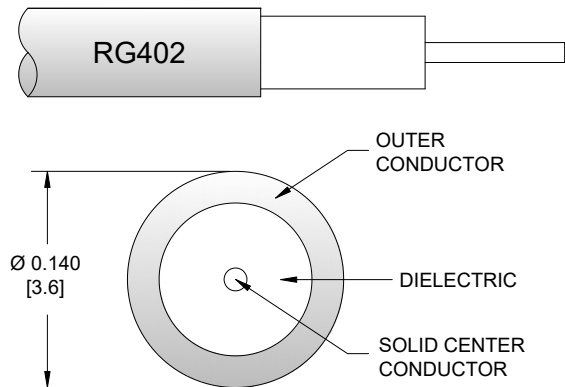
SMA Male to Straight Cut Lead Cable Using RG402 Coax



PE3493

Configuration

- Connector 1: SMA Male
- Connector 2: Straight Cut Lead
- Cable Type: RG402
- Coax Flex Type: Semi-Rigid



Applications

- General Purpose
- Laboratory Use

Description

Pasternack's PE3493 50 ohm SMA male to straight cut lead cable using RG402 coax is part of our full line of RF components available for same-day shipping. Pasternack's semi-rigid RF cable assemblies are ideal for high performance applications and can be formed, using proper tooling, to the routing pattern required.

Custom versions of most RF cable assemblies can be built and shipped same day. Custom cable assembly lengths can be obtained by specifying the desired length on the web site at time of order or by contacting a sales representative. Other available RF cable assembly value added services include connector orientation or clocking, heat shrink booting and custom labeling. RF testing can also be performed to document the electrical performance of your cable assembly.

Electrical Specifications

Description	Minimum	Typical	Maximum	Units
Capacitance		29.9 [98.1]		pF/ft [pF/m]

Mechanical Specifications

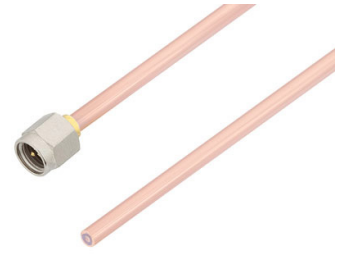
Cable Assembly

Weight 0.04 lbs [18.14 g]

Cable

Cable Type	RG402
Impedance	50 Ohms
Inner Conductor Type	Solid
Inner Conductor Material and Plating	Copper Clad Steel, Silver
Dielectric Type	PTFE
Number of Shields	1
Shield Layer 1	Copper
Jacket Material	Tan

SMA Male to Straight Cut Lead Cable Using RG402 Coax



PE3493

Connectors

Description	Connector 1	Connector 2
Type	SMA Male	Straight Cut Lead
Specification	MIL-STD-348A	
Impedance	50 Ohms	0 Ohms
Configuration	Straight	Straight
Contact Material and Plating	Brass, Gold	
Contact Plating Specification	50 µin minimum	
Dielectric Type	PTFE	
Body Material and Plating	Stainless Steel, Gold	
Body Plating Specification	10 µin minimum	
Coupling Nut Material and Plating	Brass, Nickel	
Coupling Nut Plating Specification	100 µin minimum	
Hex Size	5/16 in	
Torque	5 in-lbs 0.57 Nm	

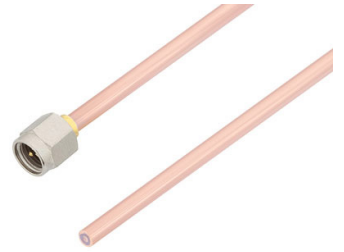
Environmental Specifications

Compliance Certifications (see [product page](#) for current document)

Plotted and Other Data

Notes:
Values at 25°C, sea level.

SMA Male to Straight Cut Lead Cable Using RG402 Coax



PE3493

Typical Performance Data

How to Order

Part Number Configuration:

PE3493 **- xx** **uu**

Unit of Measure:
cm = Centimeters
<blank> = Inches

Length

Base Number

Example: PE3493-12 = 12 inches long cable
PE3493-100cm = 100 cm long cable

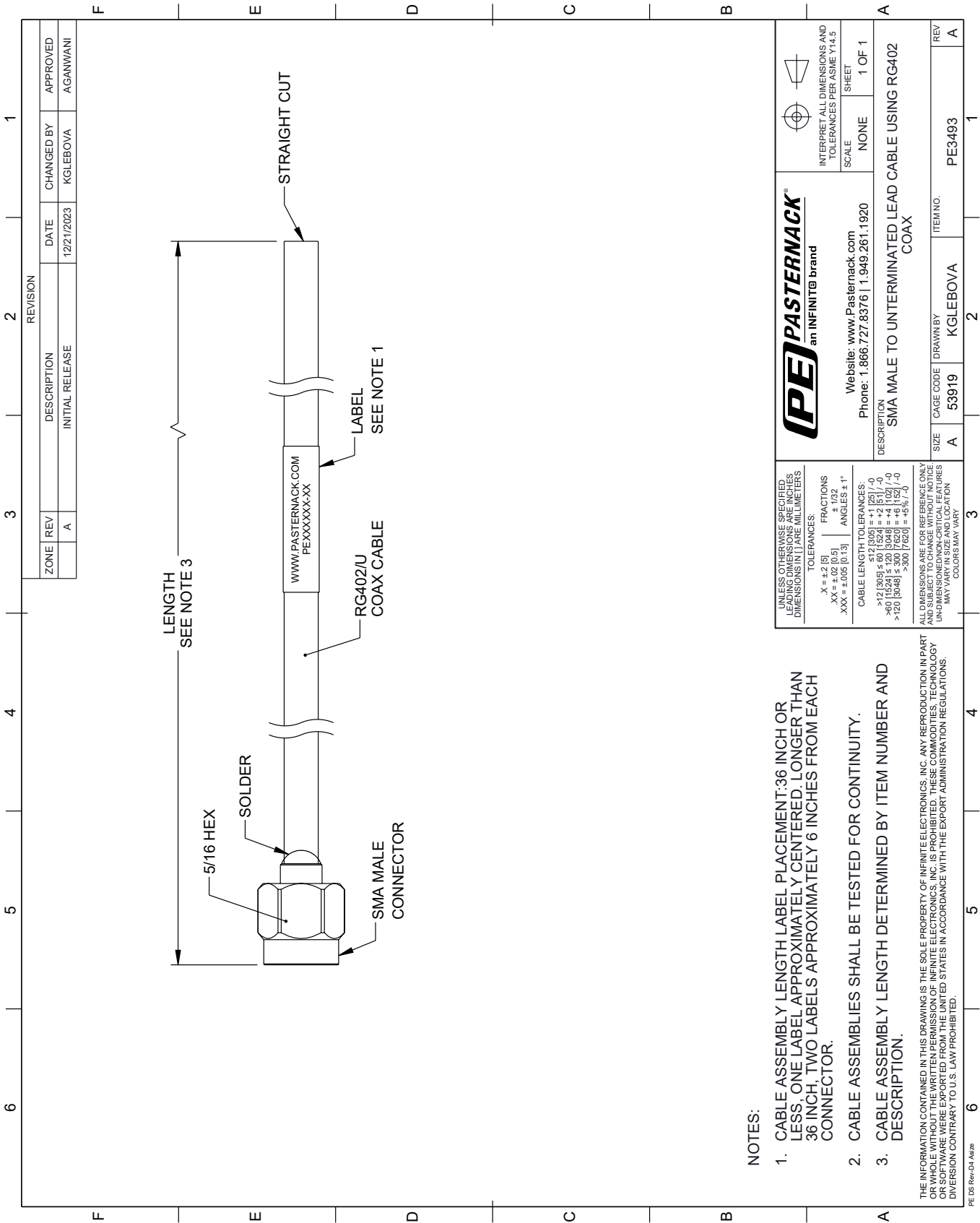
SMA Male to Straight Cut Lead Cable Using RG402 Coax from Pasternack Enterprises has same day shipment for domestic and International orders. Our RF, microwave and millimeter wave products maintain a 99.4% availability and are part of the broadest selection in the industry.

Click the following link (or enter part number in "SEARCH" on website) to obtain additional part information including price, inventory and certifications: [SMA Male to Straight Cut Lead Cable Using RG402 Coax PE3493](#)

URL: <https://www.pasternack.com/sma-male-to-straight-cut-lead-cable-using-rg402-pe3493-p.aspx>

The information contained within this document is accurate to the best of our knowledge and representative of the part described herein. It may be necessary to make modifications to the part and/or the documentation of the part in order to implement improvements. Pasternack Enterprises reserves the right to make such changes as required. Unless otherwise stated, all specifications are nominal. Pasternack Enterprises does not make any representation or warranty regarding the suitability of the part described herein for any particular purpose, and Pasternack Enterprises does not assume liability arising out of the use of any part or document.

PE3493 CAD Drawing
SMA Male to Straight Cut Lead Cable Using RG402 Coax



NOTES:

- 1. CABLE ASSEMBLY LENGTH LABEL PLACEMENT: 36 INCH OR LESS, ONE LABEL APPROXIMATELY CENTERED, LONGER THAN 36 INCH, TWO LABELS APPROXIMATELY 6 INCHES FROM EACH CONNECTOR.
- 2. CABLE ASSEMBLIES SHALL BE TESTED FOR CONTINUITY.
- 3. CABLE ASSEMBLY LENGTH DETERMINED BY ITEM NUMBER AND DESCRIPTION.

THE INFORMATION CONTAINED IN THIS DRAWING IS THE SOLE PROPERTY OF INFINITE ELECTRONICS, INC. ANY REPRODUCTION IN PART OR WHOLE WITHOUT THE WRITTEN PERMISSION OF INFINITE ELECTRONICS, INC. IS PROHIBITED. THESE COMMODITIES, TECHNOLOGY OR SOFTWARE WERE EXPORTED FROM THE UNITED STATES IN ACCORDANCE WITH THE EXPORT ADMINISTRATION REGULATIONS. DIVISION CONTRARY TO U.S. LAW PROHIBITED.

PE D9 Rev-D4 Adda

Mouser Electronics

Authorized Distributor

Click to View Pricing, Inventory, Delivery & Lifecycle Information:

[Pasternack:](#)

[PE3493-36](#)