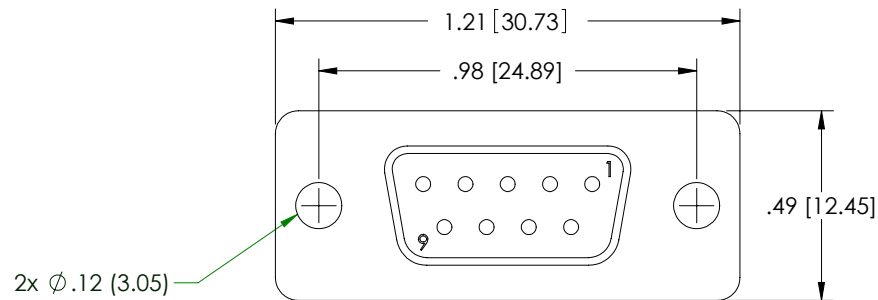
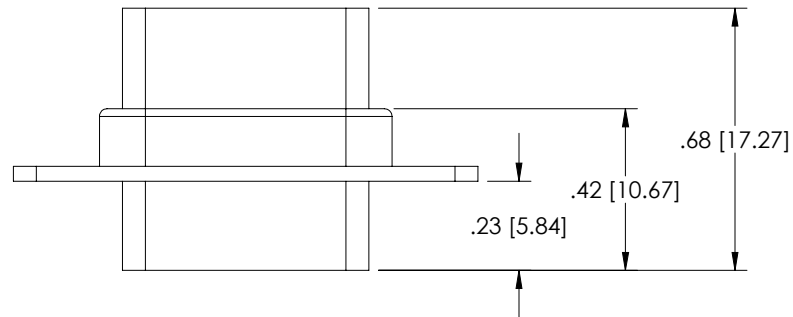


THE INFORMATION CONTAINED IN THIS DRAWING IS THE SOLE
PROPERTY OF L-COM, INC., ANY REPRODUCTION IN PART OR WHOLE
WITHOUT THE WRITTEN PERMISSION OF L-COM, INC. IS PROHIBITED.

REVISIONS			
REV	DESCRIPTION	DATE	APPROVED
A	INITIAL RELEASE	12/08/03	B.MAZEJKA
B	ECN# 2731 - ADDED ROHS STAMP	10/23/07	D.GRIFFIN
C	ECN 3388: ADD PACKAGING NOTE\UPDATE FORMAT	6/12/08	D.GRIFFIN
D	ECN#3680, ADDED PACKAGING TABLE	2008.10.30	E. STAUBLE



NOTES:

MATERIAL:

SHELL: STEEL

INSULATOR: PBT W/ GLASS FIBER FILL (UL 94V-0 RATED)

FINISH:

FRONT SHELL: BRIGHT TIN/NICKEL PLATED

REAR SHELL: BRIGHT TIN PLATED

CATALOG #	PACKAGING
C&P9F	1/BAG
C&P9F-TRAY	50/TRAY

RoHS Compliant ✓

UNLESS OTHERWISE SPECIFIED, DIMENSIONS ARE IN INCHES [mm] OVERALL CABLE LENGTH TOLERANCE: ≤12 [305] = +1 [25] / -0 >12 [305] ≤60 [1524] = +2 [51] / -0 >60 [1524] ≤120 [3048] = +4 [102] / -0 >120 [3048] ≤300 [7620] = +6 [152] / -0 >300 [7620] = +5% / -0% ALL OTHER DIMENSIONAL TOLERANCES: .X = .3 .XX = .15 PROJECTION 	APPROVALS	DATE	 45 BEECHWOOD DRIVE NORTH ANDOVER, MA 01845	
	DRAWN BY B.MAZEJKA	11/10/2003		
	CHECKED BY C.McCORMICK	12/08/2003	CATEGORY DSUB	
	APPROVED BY D.PARHAM	12/08/2003	PRODUCT DESCRIPTION DB9F CRIMP & POKE CONNECTOR	
CONFIGURATION DETAILS OF UNDIMENSIONED FEATURES MAY VARY		SIZE A	FSCM NO. 43321	DWG. NO. C_P9F
COLOR VARIATIONS MAY OCCUR		REF	SCALE: NONE	CAD FILE: C_P9F.SLDDRW
				SHEET 1 OF 1

Mouser Electronics

Authorized Distributor

Click to View Pricing, Inventory, Delivery & Lifecycle Information:

[infinite Electronics:](#)

[C&P9F](#) [C&P9F-TRAY](#)