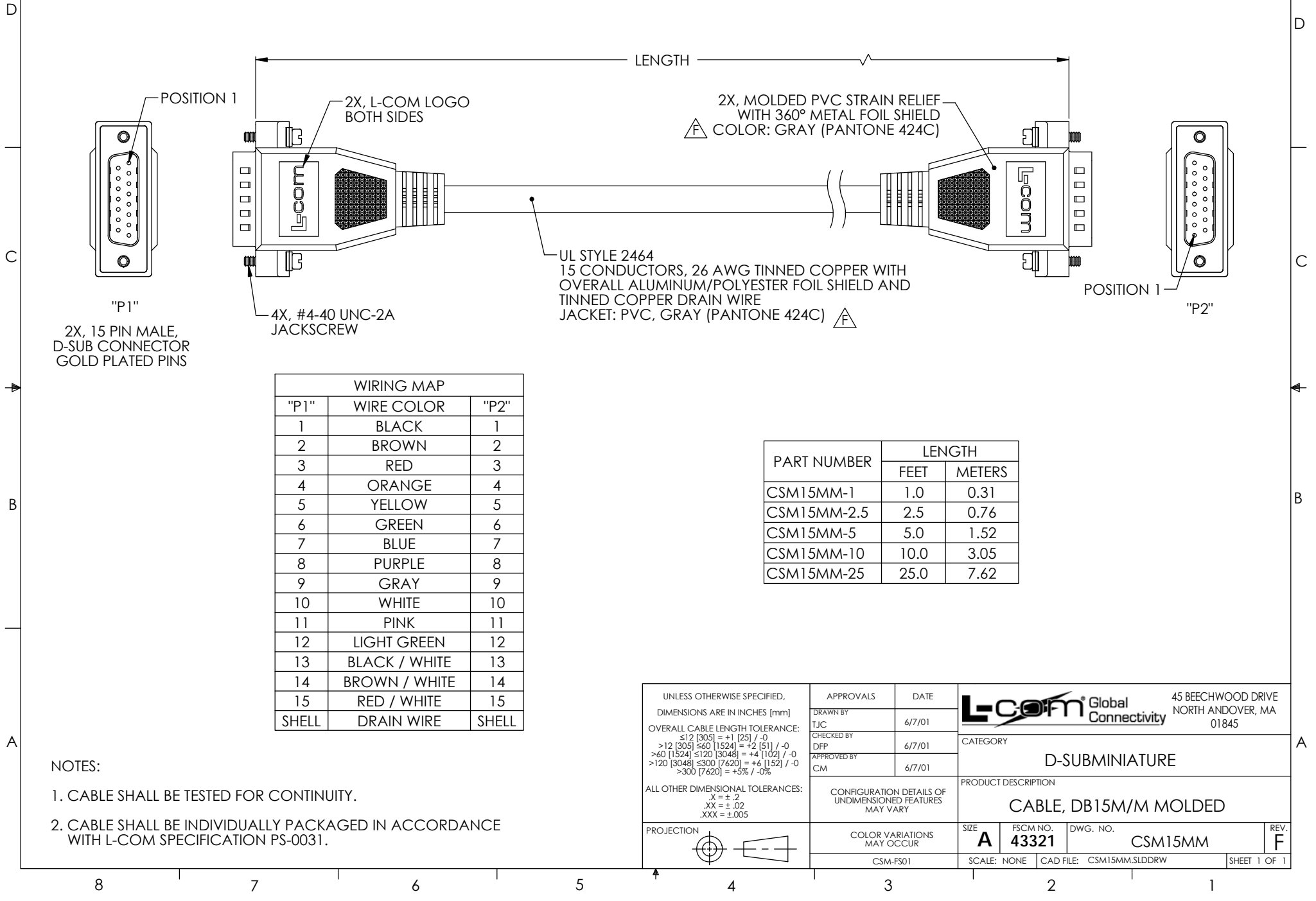


THE INFORMATION CONTAINED IN THIS DRAWING IS THE SOLE PROPERTY OF L-COM, INC. ANY REPRODUCTION IN PART OR WHOLE WITHOUT THE WRITTEN PERMISSION OF L-COM, INC. IS PROHIBITED.

RoHS Compliant ✓



REVISIONS			
REV	DESCRIPTION	DATE	APPROVED
F	ECN 6638: ADDED PANTONE #, UPDATED LOGOS	1/29/13	D. DESJARDIN



WIRING MAP		
"P1"	WIRE COLOR	"P2"
1	BLACK	1
2	BROWN	2
3	RED	3
4	ORANGE	4
5	YELLOW	5
6	GREEN	6
7	BLUE	7
8	PURPLE	8
9	GRAY	9
10	WHITE	10
11	PINK	11
12	LIGHT GREEN	12
13	BLACK / WHITE	13
14	BROWN / WHITE	14
15	RED / WHITE	15
SHELL	DRAIN WIRE	SHELL

PART NUMBER	LENGTH	
	FEET	METERS
CSM15MM-1	1.0	0.31
CSM15MM-2.5	2.5	0.76
CSM15MM-5	5.0	1.52
CSM15MM-10	10.0	3.05
CSM15MM-25	25.0	7.62

- NOTES:
1. CABLE SHALL BE TESTED FOR CONTINUITY.
 2. CABLE SHALL BE INDIVIDUALLY PACKAGED IN ACCORDANCE WITH L-COM SPECIFICATION PS-0031.

UNLESS OTHERWISE SPECIFIED, DIMENSIONS ARE IN INCHES [mm] OVERALL CABLE LENGTH TOLERANCE: ≤12 [305] = +1 [25] / -0 >12 [305] ≤60 [1524] = +2 [51] / -0 >60 [1524] ≤120 [3048] = +4 [102] / -0 >120 [3048] ≤300 [7620] = +6 [152] / -0 >300 [7620] = +5% / -0% ALL OTHER DIMENSIONAL TOLERANCES: X = ±.2 .XX = ±.02 .XXX = ±.005	APPROVALS	DATE	 45 BEECHWOOD DRIVE NORTH ANDOVER, MA 01845		
	DRAWN BY TJC	6/7/01			
	CHECKED BY DFP	6/7/01	CATEGORY	D-SUBMINIATURE	
	APPROVED BY CM	6/7/01	PRODUCT DESCRIPTION		
PROJECTION 	COLOR VARIATIONS MAY OCCUR	SIZE A	FSCM NO. 43321	DWG. NO. CSM15MM	REV. F
CSM-FS01		SCALE: NONE	CAD FILE: CSM15MM.SLDRW		SHEET 1 OF 1

Mouser Electronics

Authorized Distributor

Click to View Pricing, Inventory, Delivery & Lifecycle Information:

[infinite Electronics:](#)

[CSM15MM-1](#) [CSM15MM-10](#) [CSM15MM-2.5](#) [CSM15MM-5](#) [CSM15MM-25](#)