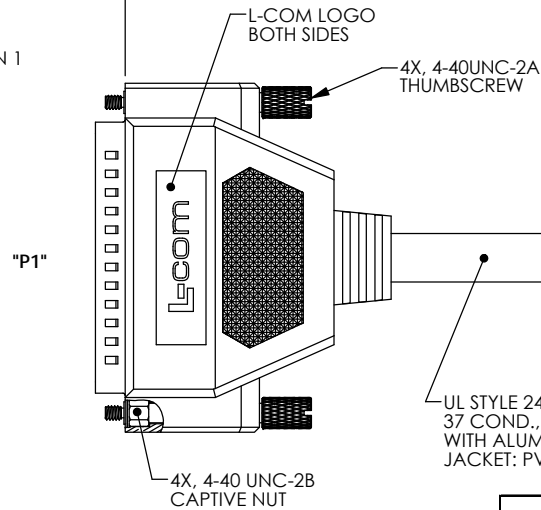
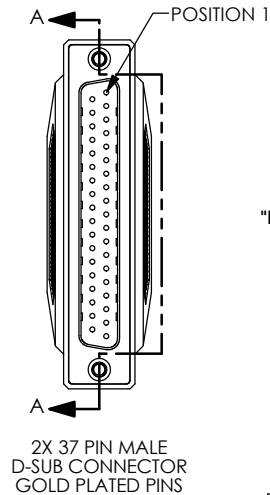
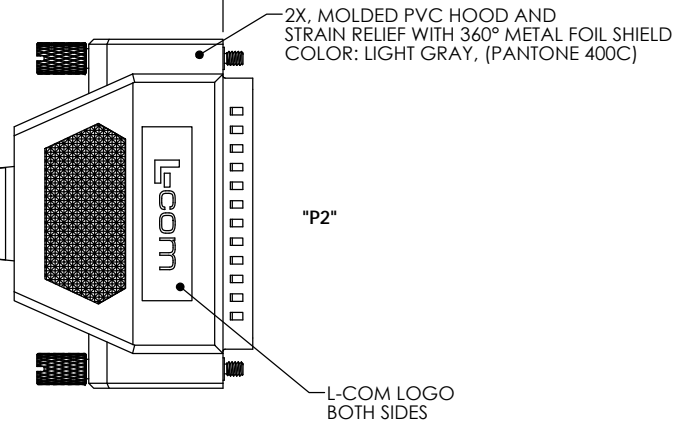


THE INFORMATION CONTAINED IN THIS DRAWING IS THE SOLE PROPERTY OF L-COM, INC. ANY REPRODUCTIONS IN PART OR WHOLE WITHOUT THE WRITTEN PERMISSION OF L-COM, INC. IS PROHIBITED.

REVISIONS			
REV	DESCRIPTION	DATE	CHANGED BY
D	ECN 3779: DEFINED COLOR TO LIGHT GRAY, NEW FORMAT	1/6/09	D.FRISIELLO
E	ECN 4602: ADDED NOTES, REVISED FORMAT, LOGO, COLOR	1/16/13	D.FRISIELLO
F	ECN 7241: ADDED 1 FT LENGTH, REVISED ROHS AND FORMAT	1/21/14	D.FRISIELLO



UL STYLE 2464
37 COND., 26AWG STRANDED TINNED COPPER
WITH ALUM/POLY FOIL SHIELD AND DRAIN WIRE
JACKET: PVC, LIGHT GRAY (PANTONE 400C)



WIRING MAP					
"P1"	WIRE COLOR	"P2"	"P1"	WIRE COLOR	"P2"
1	BLACK	1	20	RED / BLACK	20
2	BROWN	2	21	ORANGE / BLACK	21
3	RED	3	22	YELLOW / BLACK	22
4	ORANGE	4	23	GREEN / BLACK	23
5	YELLOW	5	24	GRAY / BLACK	24
6	GREEN	6	25	PINK / BLACK	25
7	BLUE	7	26	PINK / RED	26
8	PURPLE	8	27	PINK / BLUE	27
9	GRAY	9	28	PINK / GREEN	28
10	WHITE	10	29	LIGHT BLUE	29
11	PINK	11	30	LIGHT BLUE / BLACK	30
12	LIGHT GREEN	12	31	LIGHT BLUE / RED	31
13	BLACK / WHITE	13	32	LIGHT BLUE / BLUE	32
14	BROWN / WHITE	14	33	LIGHT BLUE / GREEN	33
15	RED / WHITE	15	34	GRAY / RED	34
16	ORANGE / WHITE	16	35	GRAY / GREEN	35
17	GREEN / WHITE	17	36	PURPLE / BLACK	36
18	BLUE / WHITE	18	37	BLUE / BLACK	37
19	PURPLE / WHITE	19	SHELL	DRAIN WIRE	SHELL

PART NUMBER	LENGTH	
	FEET	METERS
CRMN37MM-1	1.0	0.31
CRMN37MM-2.5	2.5	0.76
CRMN37MM-5	5.0	1.52
CRMN37MM-10	10.0	3.05
CRMN37MM-15	15.0	4.57
CRMN37MM-25	25.0	7.62

SUPPLIED WITH THUMBSCREWS IN PLACE.
NOTE: SUPPLIED WITH OPTIONAL USE HARDWARE AND INSTRUCTIONS.
CABLE INTERCONNECTION HARDWARE: (4) SCREWLOCKS, H= .191"
PANEL MOUNT HARDWARE: (4) SCREWLOCKS, H= .160"

NOTES:

- CABLE ASSEMBLY SHALL BE TESTED FOR CONTINUITY.
- CABLE ASSEMBLY SHALL BE INDIVIDUALLY PACKAGED IN ACCORDANCE WITH L-COM SPECIFICATION PS-0031.

REGULATORY COMPLIANCE:
CE2011/65/EU(RoHS DIRECTIVE)

UNLESS OTHERWISE SPECIFIED,
DIMENSIONS ARE IN INCHES (mm)
OVERALL CABLE LENGTH TOLERANCE:
≤12 (305) ±.1 (25) / -0
>12 (305) ≤60 (1524) = +.25 (11) / -0
>60 (1524) ≤120 (3048) = +.4 (102) / -0
>120 (3048) ≤300 (7620) = +.6 (152) / -0
>300 (7620) = +.8 (20) / -0
ALL OTHER DIMENSIONAL TOLERANCES:
X = ±.2 (5.08)
XX = ±.02 (5.1)
XXX = ±.005 (1.3)



APPROVALS	DATE
DRAWN BY I. CLARK	1/23/2003
CHECKED BY D. PARHAM	1/29/2003
APPROVED BY R. CARRICK	1/29/2003
CONFIGURATION DETAILS OF UNDIMENSIONED FEATURES MAY VARY	
COLOR VARIATIONS MAY OCCUR	
CRMN-FS01	

		45 BEECHWOOD DRIVE NORTH ANDOVER, MA 01845	
CATEGORY D-SUBMINIATURE			
PRODUCT DESCRIPTION CABLE, DB37M/M REVERSIBLE HDWR			
SIZE B	PSCM NO. 43321	DWG. NO. CRMN37MM	REV. F
SCALE: 1:1 CAD FILE: CRMN37MM.SLDORW		SHEET 1 OF 1	

Mouser Electronics

Authorized Distributor

Click to View Pricing, Inventory, Delivery & Lifecycle Information:

[infinite Electronics:](#)

[CRMN37MM-2.5](#) [CRMN37MM-1](#) [CRMN37MM-25](#) [CRMN37MM-5](#) [CRMN37MM-15](#) [CRMN37MM-10](#)