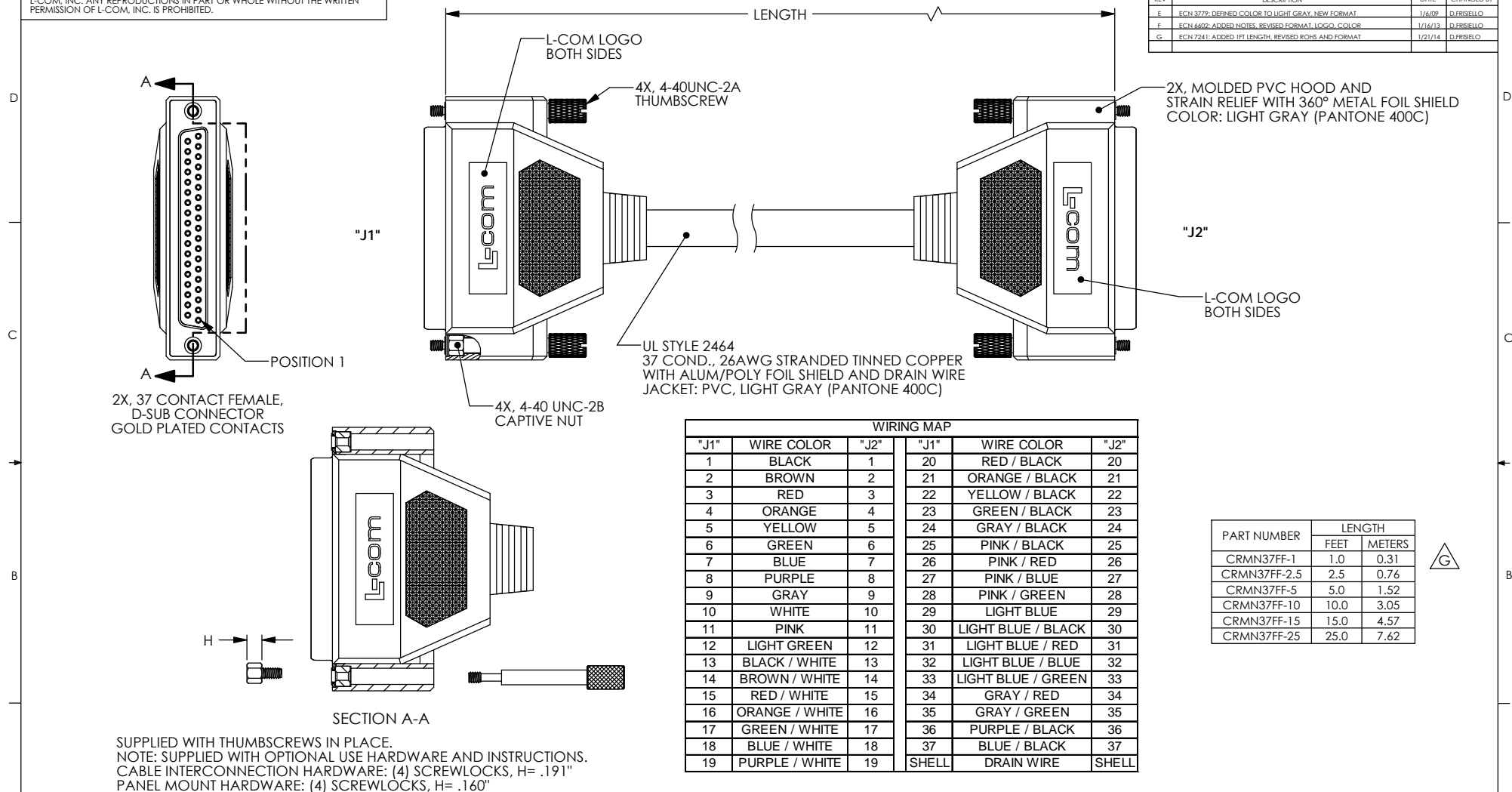


THE INFORMATION CONTAINED IN THIS DRAWING IS THE SOLE PROPERTY OF L-COM, INC. ANY REPRODUCTIONS IN PART OR WHOLE WITHOUT THE WRITTEN PERMISSION OF L-COM, INC. IS PROHIBITED.

REVISIONS			
REV	DESCRIPTION	DATE	CHANGED BY
E	ECN 3779: DEFINED COLOR TO LIGHT GRAY, NEW FORMAT	1/6/09	D.FRISIELLO
F	ECN 4602: ADDED NOTES, REVISED FORMAT, LOGO, COLOR	1/16/13	D.FRISIELLO
G	ECN 7241: ADDED 1FT LENGTH, REVISED ROHS AND FORMAT	1/21/14	D.FRISIELLO



WIRING MAP					
"J1"	WIRE COLOR	"J2"	"J1"	WIRE COLOR	"J2"
1	BLACK	1	20	RED / BLACK	20
2	BROWN	2	21	ORANGE / BLACK	21
3	RED	3	22	YELLOW / BLACK	22
4	ORANGE	4	23	GREEN / BLACK	23
5	YELLOW	5	24	GRAY / BLACK	24
6	GREEN	6	25	PINK / BLACK	25
7	BLUE	7	26	PINK / RED	26
8	PURPLE	8	27	PINK / BLUE	27
9	GRAY	9	28	PINK / GREEN	28
10	WHITE	10	29	LIGHT BLUE	29
11	PINK	11	30	LIGHT BLUE / BLACK	30
12	LIGHT GREEN	12	31	LIGHT BLUE / RED	31
13	BLACK / WHITE	13	32	LIGHT BLUE / BLUE	32
14	BROWN / WHITE	14	33	LIGHT BLUE / GREEN	33
15	RED / WHITE	15	34	GRAY / RED	34
16	ORANGE / WHITE	16	35	GRAY / GREEN	35
17	GREEN / WHITE	17	36	PURPLE / BLACK	36
18	BLUE / WHITE	18	37	BLUE / BLACK	37
19	PURPLE / WHITE	19	SHELL	DRAIN WIRE	SHELL

PART NUMBER	LENGTH	
	FEET	METERS
CRMN37FF-1	1.0	0.31
CRMN37FF-2.5	2.5	0.76
CRMN37FF-5	5.0	1.52
CRMN37FF-10	10.0	3.05
CRMN37FF-15	15.0	4.57
CRMN37FF-25	25.0	7.62

#### NOTES:

1. CABLE ASSEMBLY SHALL BE TESTED FOR CONTINUITY.
2. CABLE ASSEMBLY SHALL BE INDIVIDUALLY PACKAGED IN ACCORDANCE WITH L-COM SPECIFICATION PS-0031.

**REGULATORY COMPLIANCE:**  
CE2011/65/EU(RoHS DIRECTIVE)

UNLESS OTHERWISE SPECIFIED,  
DIMENSIONS ARE IN INCHES (mm)  
OVERALL CABLE LENGTH TOLERANCE:  
≤12 (305) ±0.125 (±3.18) / -0  
>12 (305) ≤60 (1524) ±0.251 (±6.35) / -0  
>60 (1524) ≤120 (3048) ±0.502 (±12.7) / -0  
>120 (3048) ≤300 (7620) ±1.004 (±25.4) / -0  
>300 (7620) ±1.506 (±38.1) / -0  
ALL OTHER DIMENSIONAL TOLERANCES:  
X = ±0.005 (±0.127)  
XX = ±0.010 (±0.254)  
XXX = ±0.015 (±0.381)

PROJECTION  
①

APPROVALS  
DRAWN BY  
1/12/2003  
CHECKED BY  
D. PARHAM  
1/29/2003  
APPROVED BY  
1/29/2003  
R. CARRICK  
CONFIGURATION DETAILS OF  
UNDIMENSIONED FEATURES  
MAY VARY  
COLOR VARIATIONS  
MAY OCCUR  
CRMN-FS01

<b>L-com</b> Global Connectivity		45 BEECHWOOD DRIVE NORTH ANDOVER, MA 01845	
CATEGORY		D-SUBMINIATURE	
PRODUCT DESCRIPTION			
CABLE, DB37F/F REVERSIBLE HDWR			
SIZE	FSCM NO.	DWG. NO.	REV.
<b>B</b>	<b>43321</b>	CRMN37FF	<b>G</b>
SCALE: 1:1		CAD FILE: CRMN37FF.SLDRAW	SHEET 1 OF 1

# Mouser Electronics

Authorized Distributor

Click to View Pricing, Inventory, Delivery & Lifecycle Information:

[infinite Electronics:](#)

[CRMN37FF-5](#) [CRMN37FF-1](#) [CRMN37FF-25](#) [CRMN37FF-15](#) [CRMN37FF-10](#) [CRMN37FF-2.5](#)