

2.4 GHz to 5.85 GHz Dual Band Antenna, Monopole, 90-degree angle, SMA Male Connector, 2.1 and 5.47 dBi Gain

PEANRBD1042



Features

- 2400-2500 / 5150-5850 MHz, 2.1/5.47 dBi Gain
- 90-degree SMA male connector
- Plug and play
- VSWR < 2.5:1
- Linear polarization
- Monopole antenna

Applications

- 2.4/5 GHz Wi-Fi and ISM applications
- WLAN applications
- IOT, Wireless audio/video systems
- Home automation
- Telemetry, remote monitoring
- Wireless data acquisition
- 802.11 a/b/g/n/ax/ac, wireless hotspots
- PtP and PtMP applications
- 5G bands: n53, n46
- 4G LTE bands: B252, B255, B46

Description

The Pasternack PEANRBD1042 WiFi antenna is an omni antenna operating from 2.4 GHz to 5.85 GHz with 2.1 and 5.47 dBi gain. Our high-quality rubber duck antenna transmits high power signals, increasing the signal strength, thus providing improved coverage, better broadcast control, and faster speed. The SMA male connector on this monopole antenna enables it to be used vertically, at a right angle, or at any angle in between.

This PEANRBD1042 WiFi antenna is 0.716 inches wide, 4.33 inches long, and 0.716 inches tall. Pasternack's omnidirectional antenna has a maximum input VSWR of 2.5:1, which results in the best power transfer and reduced losses. This omnidirectional antenna has a linear polarization, an SMA male connector, and an TPEE radome material. Our black WiFi antenna functions between -40 to 65 degrees C and has 50 Ohm impedance.

The Pasternack WiFi antenna is ideal for 2.4/5 GHz Wi-Fi and ISM applications, WLAN, Bluetooth, IOT, wireless audio/video systems, home automation, telemetry, remote monitoring, wireless data acquisition, 802.11 a/b/g/n/ax, wireless hotspots, PtP and PtMP applications. This monopole antenna has a waterproof design, a high power handling capacity, and IP66 ingress protection rating. The double band antenna has a gain of 2.1 dBi for the 2.4 GHz to 2.5 GHz frequency range and a gain of 5.47 dBi for the 5.15 GHz to 5.85 GHz frequency range.

This 2.1 dBi gain omni directional antenna is one of the thousands of products available from Pasternack's in-stock inventory with same business day shipment for local, domestic, and international orders. Make your online purchase for our high-quality antennas and take advantage of the same business day shipping services. For further information on similar products, our expert technical support and knowledgeable sales team can help you get the perfect 2.4 GHz to 5.85 GHz antenna for your requirement.

Configuration

Design	Rubber Duck
Band Type	Multi
Radiation Pattern	Omni Directional
Polarization	Linear
Connector Type	SMA Male

Electrical Specifications

Description	Minimum	Typical	Maximum	Units
Frequency Range	2,400		5,850	MHz
Input VSWR			2.5:1	
Impedance		50		Ohms
Input Power			10	Watts

2.4 GHz to 5.85 GHz Dual Band Antenna, Monopole,
90-degree angle, SMA Male Connector, 2.1 and 5.47 dBi Gain

PEANRBD1042



Specifications by Band

Description	Band 1	Band 2	Band 3	Band 4	Band 5	Units
Frequency	2.4 to 2.5	5.15 to 5.85				GHz
Gain	2.1	5.47				dBi

Mechanical Specifications

Radome Material TPEE

Size

Length 4.33 in [109.98 mm]
Width 0.716 in [18.19 mm]
Height 0.716 in [18.19 mm]
Weight 0.02 lbs [9.07 g]

Environmental Specifications

Temperature

Operating Range -40 to +65 deg C
Storage Range -40 to +80 deg C
Environment Waterproof
Ingress Protection IP66

Compliance Certifications (see [product page](#) for current document)

Plotted and Other Data

Notes:

2.4 GHz to 5.85 GHz Dual Band Antenna, Monopole,
90-degree angle, SMA Male Connector, 2.1 and 5.47 dBi Gain

PEANRBD1042



Typical Radiation Pattern

Appendix

Electrical Downtilt: Angle in the antenna's elevation pattern in which the maximum gain occurs.

Gain: Antenna's average gain.

Front to Back Ratio @ 180°±30°: Average difference between the antenna's maximum gain and the maximum gain in the antenna's back lobe over ±30° angles.

Cross-polarization Ratio (dB): Typical difference between the co-polarization and cross-polarization gain across the sector's 3 dB Beam Width.

Dedicated to serving the needs of the Wireless Internet Service Provider (WISP) market, KP Performance Antennas offers purpose built products that reliably perform in the field. KP Performance Antennas product line consists of Yagi, Grid, Omni, Dish and other style antennas that operate in the 900 MHz, 2.4 GHz, 3 GHz, and 5 GHz frequencies.

2.4 GHz to 5.85 GHz Dual Band Antenna, Monopole, 90-degree angle, SMA Male Connector, 2.1 and 5.47 dBi Gain from Pasternack Enterprises has same day shipment for domestic and International orders. Our RF, microwave and millimeter wave products maintain a 99.4% availability and are part of the broadest selection in the industry.

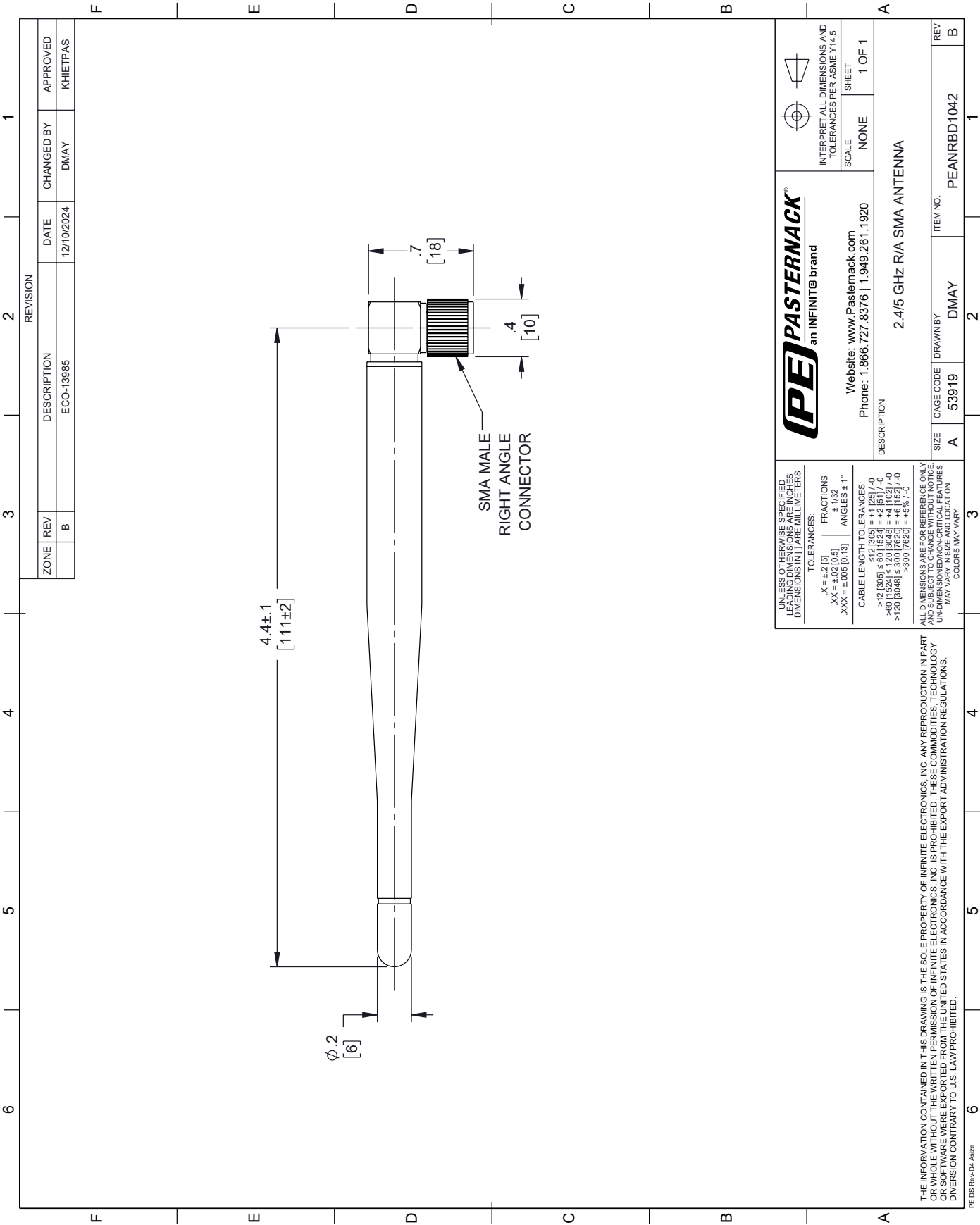
Click the following link (or enter part number in "SEARCH" on website) to obtain additional part information including price, inventory and certifications: [2.4 GHz to 5.85 GHz Dual Band Antenna, Monopole, 90-degree angle, SMA Male Connector, 2.1 and 5.47 dBi Gain PEANRBD1042](#)

URL: <https://www.pasternack.com/multi-band-rubber-duck-antenna-2400-5850-mhz-sma-male-connector-peanrbd1042.html>

The information contained within this document is accurate to the best of our knowledge and representative of the part described herein. It may be necessary to make modifications to the part and/or the documentation of the part in order to implement improvements. Pasternack Enterprises reserves the right to make such changes as required. Unless otherwise stated, all specifications are nominal. Pasternack Enterprises does not make any representation or warranty regarding the suitability of the part described herein for any particular purpose, and Pasternack Enterprises does not assume liability arising out of the use of any part or document.

PEANRBD1042 CAD Drawing

2.4 GHz to 5.85 GHz Dual Band Antenna, Monopole, 90-degree angle,
SMA Male Connector, 2.1 and 5.47 dBi Gain



Mouser Electronics

Authorized Distributor

Click to View Pricing, Inventory, Delivery & Lifecycle Information:

[Pasternack:](#)

[PEANRBD1042](#)