

2.92mm Male to SMA Male Cable Using Tinned RG405 Coax



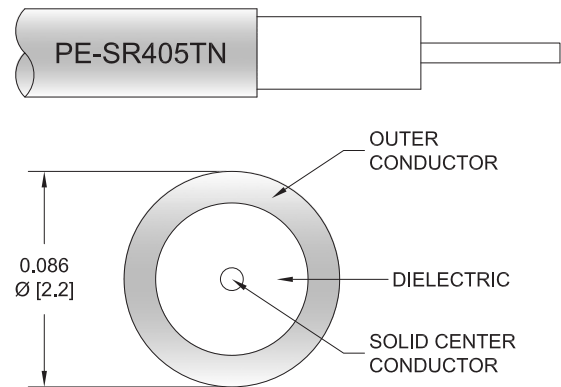
PE3W19257

Configuration

- Connector 1: 2.92mm Male
- Connector 2: SMA Male
- Cable Type: RG405 Tinned
- Coax Flex Type: Semi-Rigid

Features

- Max Frequency 20 GHz
- 500 Mating Cycles



Applications

- General Purpose
- Laboratory Use

Description

Pasternack's PE3W19257 2.92mm male to SMA male cable using tinned RG405 coax is part of our full line of RF components available for same-day shipping. Pasternack's semi-rigid RF cable assemblies are ideal for high performance applications and can be formed, using proper tooling, to the routing pattern required. This Pasternack 2.92mm to SMA cable assembly has a male to male gender configuration with 50 ohm semi-rigid RG405 tinned coax. The PE3W19257 2.92mm male to SMA male cable assembly operates to 20 GHz.

Custom versions of most RF cable assemblies can be built and shipped same day. Custom cable assembly lengths can be obtained by specifying the desired length on the web site at time of order or by contacting a sales representative. Other available RF cable assembly value added services include connector orientation or clocking, heat shrink booting and custom labeling. RF testing can also be performed to document the electrical performance of your cable assembly.

Electrical Specifications

Description	Minimum	Typical	Maximum	Units
Frequency Range	DC		20	GHz
VSWR			1.3:1	

Specifications by Frequency

2.92mm Male to SMA Male Cable Using Tinned RG405 Coax



PE3W19257

Part Number	Length	Description	F1	F2	F3	F4	F5	Units	Weight (lbs)
		Frequency	1000	2000	4500	9000	20000	MHz	
PE3W19257	Custom Lengths Available	Insertion Loss (Typ.)	0.22	0.28	0.44	0.73	1.2	dB/ft	
			0.73	0.92	1.45	2.4	3.94	dB/m	
PE3W19257-6	6 inch	Insertion Loss (Typ.)	0.31	0.34	0.42	0.57	0.8	dB	0.026
PE3W19257-12	12 inch	Insertion Loss (Typ.)	0.42	0.48	0.64	0.93	1.4	dB	0.032
PE3W19257-18	18 inch	Insertion Loss (Typ.)	0.53	0.62	0.86	1.3	2	dB	0.039
PE3W19257-24	24 inch	Insertion Loss (Typ.)	0.64	0.76	1.08	1.66	2.6	dB	0.046
PE3W19257-36	36 inch	Insertion Loss (Typ.)	0.86	1.04	1.52	2.39	3.8	dB	0.059

The insertion loss data for the base model does not include loss due to the connectors. Each length includes insertion loss due to the connectors.

Loss due to Connector 1:	0.1 dB
Loss due to Connector 2:	0.1 dB
Base Weight:	0.032 pounds
Additional Weight per Inch:	0.00109 pounds

Mechanical Specifications

Cable Assembly

Width/Diameter	0.5 in [12.7 mm]
Weight	0.032 lbs [14.51 g]

Cable

Cable Type	RG405 Tinned
Impedance	50 Ohms
Inner Conductor Type	Solid
Inner Conductor Material and Plating	Copper Clad Steel, Silver
Dielectric Type	PTFE
Number of Shields	1
Outer Conductor 1 Material and Plating	Tinned Copper
One Time Minimum Bend Radius	0.05 in [1.27 mm]

2.92mm Male to SMA Male Cable Using Tinned RG405 Coax



PE3W19257

Connectors

Description	Connector 1	Connector 2
Type	2.92mm Male	SMA Male
Impedance	50 Ohms	50 Ohms
Configuration	Straight	Straight
Mating Cycles	500	500
Contact Material and Plating	Beryllium Copper, Gold over Nickel	Beryllium Copper, Gold
Contact Plating Specification	50 µin minimum	ASTM-B488
Dielectric Type	PCTFE	PTFE
Body Material and Plating	Passivated Stainless Steel	Beryllium Copper, Gold
Body Plating Specification	SAE-AMS-2700	ASTM-B488
Coupling Nut Material and Plating	Passivated Stainless Steel	Steel
Coupling Nut Plating Specification	SAE-AMS-2700	
Hex Size	5/16 inch	
Torque	8 in-lbs 0.9 Nm	7 in-lbs 0.79 Nm
Seal Gasket Material		Silicone Rubber

Environmental Specifications

Operating Range Temperature -55 to +125 deg C

Compliance Certifications (see [product page](#) for current document)

Plotted and Other Data

Notes:

2.92mm Male to SMA Male Cable Using Tinned RG405 Coax



PE3W19257

Typical Performance Data

How to Order

Part Number Configuration: **PE3W19257** **- xx** **uu**

Unit of Measure:
cm = Centimeters
<blank> = Inches

Length

Base Number

Example: PE3W19257-12 = 12 inches long cable
PE3W19257-100cm = 100 cm long cable

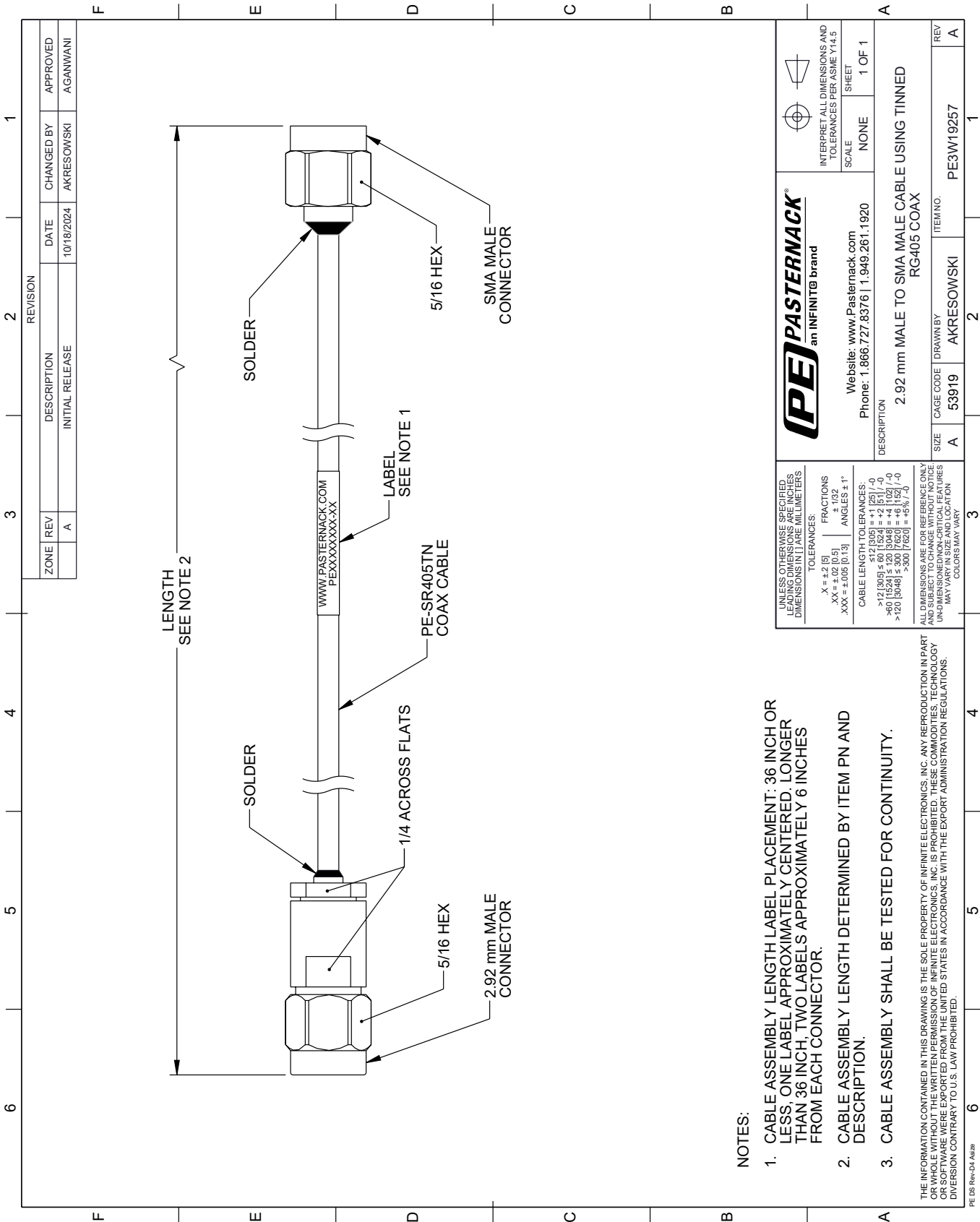
2.92mm Male to SMA Male Cable Using Tinned RG405 Coax from Pasternack Enterprises has same day shipment for domestic and International orders. Our RF, microwave and millimeter wave products maintain a 99.4% availability and are part of the broadest selection in the industry.

Click the following link (or enter part number in "SEARCH" on website) to obtain additional part information including price, inventory and certifications: [2.92mm Male to SMA Male Cable Using Tinned RG405 Coax PE3W19257](#)

URL: <https://www.pasternack.com/2.92mm-male-to-sma-male-cable-using-tinned-rg405-pe3w19257-p.aspx>

The information contained within this document is accurate to the best of our knowledge and representative of the part described herein. It may be necessary to make modifications to the part and/or the documentation of the part in order to implement improvements. Pasternack Enterprises reserves the right to make such changes as required. Unless otherwise stated, all specifications are nominal. Pasternack Enterprises does not make any representation or warranty regarding the suitability of the part described herein for any particular purpose, and Pasternack Enterprises does not assume liability arising out of the use of any part or document.

PE3W19257 CAD Drawing
2.92mm Male to SMA Male Cable Using Tinned RG405 Coax



- 1. CABLE ASSEMBLY LENGTH LABEL PLACEMENT: 36 INCH OR LESS, ONE LABEL APPROXIMATELY CENTERED. LONGER THAN 36 INCH, TWO LABELS APPROXIMATELY 6 INCHES FROM EACH CONNECTOR.
- 2. CABLE ASSEMBLY LENGTH DETERMINED BY ITEM PN AND DESCRIPTION.
- 3. CABLE ASSEMBLY SHALL BE TESTED FOR CONTINUITY.

PE PASTERNAK an INFINITE® brand		Website: www.Pasternack.com Phone: 1.866.727.8376 1.949.261.1920		INTERPRET ALL DIMENSIONS AND TOLERANCES PER ASME Y14.5	
UNLESS OTHERWISE SPECIFIED, ALL DIMENSIONS ARE IN INCHES. DIMENSIONS IN [] ARE IN MILLIMETERS.		TOLERANCES:		SCALE: NONE	
X = ±.2 [5]		FRACTIONS		SHEET 1 OF 1	
.XX = ±.02 [0.5]		± 1/32			
.XXX = ±.005 [0.13]		ANGLES ± 1°			
CABLE LENGTH TOLERANCES:					
>12 [305] ≤ 60 [1524] = ±.1 [25] / -0					
>60 [1524] ≤ 120 [3048] = ±.1 [25] / -0					
>120 [3048] ≤ 300 [7620] = ±.1 [25] / -0					
ALL DIMENSIONS ARE FOR REFERENCE ONLY. UNLESS OTHERWISE SPECIFIED, DIMENSIONS MAY VARY IN SIZE AND LOCATION. COLORS MAY VARY.					
DESCRIPTION		2.92 mm MALE TO SMA MALE CABLE USING TINNED RG405 COAX			
SIZE		A			
CAGE CODE		53919			
DRAWN BY		AKRESOWSKI			
ITEM NO.		PE3W19257			
REV		A			

Mouser Electronics

Authorized Distributor

Click to View Pricing, Inventory, Delivery & Lifecycle Information:

[Pasternack:](#)

[PE3W19257-24](#)