



## 3.5mm Male to 1.85mm Female Bulkhead Cable Using Tinned RG405 Coax

### RF Cable Assemblies Technical Data Sheet

**PE3W11596**

#### Configuration

- Connector 1: 3.5mm Male
- Connector 2: 1.85mm Female Bulkhead
- Cable Type: RG405 Tinned

#### Applications

- General Purpose
- Laboratory Use

#### Description

Pasternack's PE3W11596 3.5mm male to 1.85mm female bulkhead cable using tinned RG405 coax is part of our full line of RF components available for same-day shipping. Pasternack's semi-rigid RF cable assemblies are ideal for high performance applications and can be formed, using proper tooling, to the routing pattern required. This Pasternack 3.5mm to 1.85mm cable assembly has a male to female gender configuration with 50 ohm semi-rigid RG405 tinned coax. Our RF cable assembly with 1.85mm bulkhead interface allows designers to create external connections on their product enclosures, and can be used in a variety of other rack mount and panel mount applications.

Custom versions of most RF cable assemblies can be built and shipped same day. Custom cable assembly lengths can be obtained by specifying the desired length on the web site at time of order or by contacting a sales representative. Other available RF cable assembly value added services include connector orientation or clocking, heat shrink booting and custom labeling. RF testing can also be performed to document the electrical performance of your cable assembly.

#### Mechanical Specifications

##### Cable Assembly

Weight 0.047 lbs [21.32 g]

##### Cable

Cable Type	RG405 Tinned
Impedance	50 Ohms
Inner Conductor Type	Solid
Inner Conductor Material and Plating	Copper Clad Steel, Silver
Dielectric Type	PTFE
Number of Shields	1
Shield Layer 1	Tinned Copper

One Time Minimum Bend Radius 0.05 in [1.27 mm]

Click the following link (or enter part number in "SEARCH" on website) to obtain additional part information including price, inventory and certifications: [3.5mm Male to 1.85mm Female Bulkhead Cable Using Tinned RG405 Coax PE3W11596](#)



3.5mm Male to 1.85mm Female Bulkhead  
Cable Using Tinned RG405 Coax

**RF Cable Assemblies Technical Data Sheet**

**PE3W11596**

**Connectors**

Description	Connector 1	Connector 2
Type	3.5mm Male	1.85mm Female Bulkhead
Specification		IEEE-STD-P287
Impedance	50 Ohms	50 Ohms
Contact Material and Plating	Beryllium Copper, Gold over Nickel	Beryllium Copper, Gold over Nickel
Contact Plating Specification	50 µin minimum	50 µin minimum
Dielectric Type	PCTFE	PEI
Body Material and Plating	Passivated Stainless Steel	Passivated Stainless Steel
Body Plating Specification	SAE-AMS-2700	SAE-AMS-2700
Coupling Nut Material and Plating	Passivated Stainless Steel	
Coupling Nut Plating Specification	SAE-AMS-2700	
Hex Size	5/16 inch	
Torque	8 in-lbs [0.9 Nm]	

**Compliance Certifications** (see [product page](#) for current document)

**Plotted and Other Data**

Notes:

Click the following link (or enter part number in "SEARCH" on website) to obtain additional part information including price, inventory and certifications: [3.5mm Male to 1.85mm Female Bulkhead Cable Using Tinned RG405 Coax PE3W11596](#)



## 3.5mm Male to 1.85mm Female Bulkhead Cable Using Tinned RG405 Coax

### RF Cable Assemblies Technical Data Sheet

**PE3W11596**

#### How to Order

Part Number Configuration:

**PE3W11596**

- **xx**

**uu**

Unit of Measure:  
cm = Centimeters  
<blank> = Inches  
Length  
Base Number

Example: PE3W11596-12 = 12 inches long cable  
PE3W11596-100cm = 100 cm long cable

3.5mm Male to 1.85mm Female Bulkhead Cable Using Tinned RG405 Coax from Pasternack Enterprises has same day shipment for domestic and International orders. Our RF, microwave and millimeter wave products maintain a 99.4% availability and are part of the broadest selection in the industry.

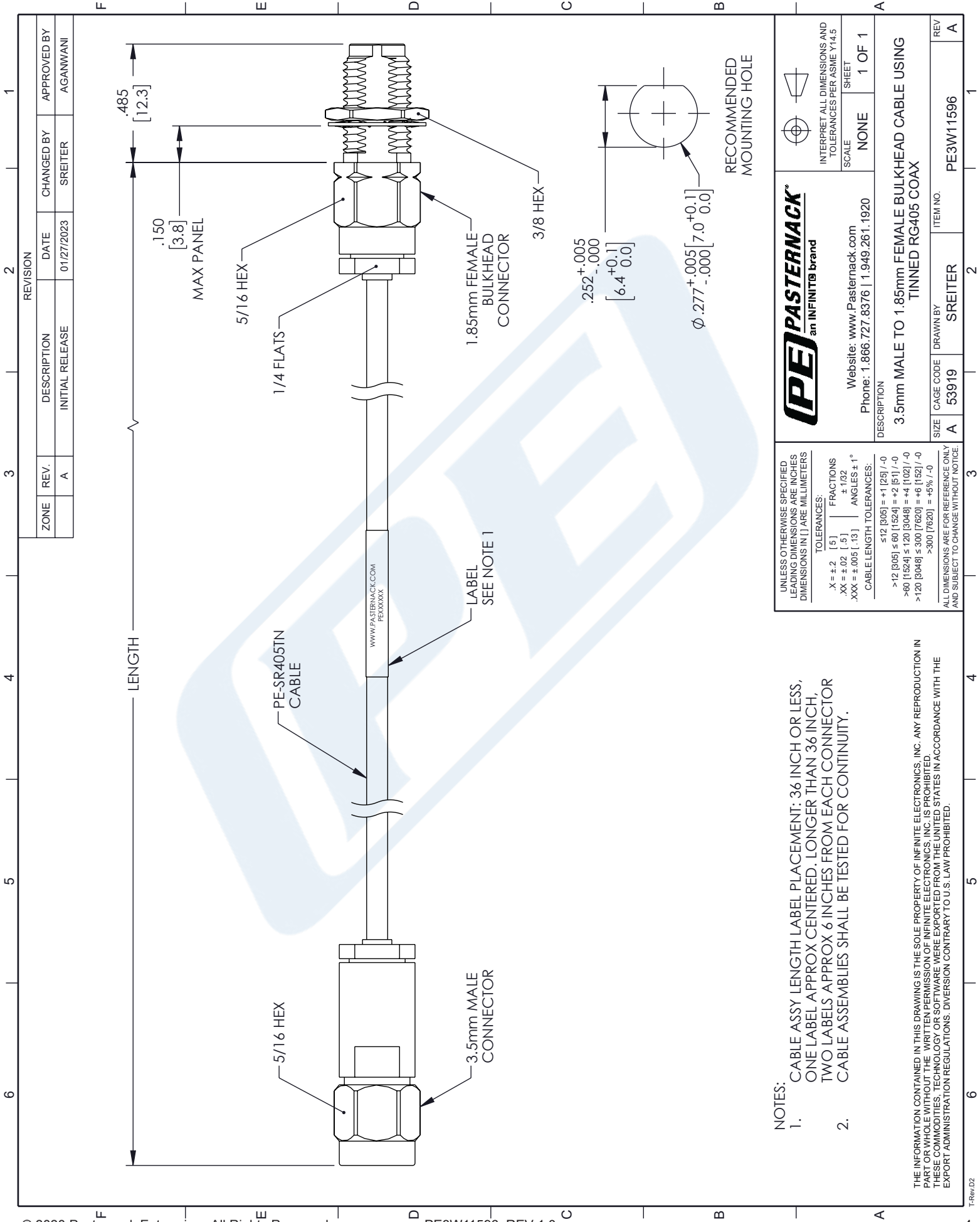
Click the following link (or enter part number in "SEARCH" on website) to obtain additional part information including price, inventory and certifications: [3.5mm Male to 1.85mm Female Bulkhead Cable Using Tinned RG405 Coax PE3W11596](https://www.pasternack.com/3.5mm-male-to-1.85mm-female-bulkhead-cable-using-tinned-rg405-pe3w11596-p.aspx)

URL: <https://www.pasternack.com/3.5mm-male-to-1.85mm-female-bulkhead-cable-using-tinned-rg405-pe3w11596-p.aspx>

The information contained in this document is accurate to the best of our knowledge and representative of the part described herein. It may be necessary to make modifications to the part and/or the documentation of the part, in order to implement improvements. Pasternack reserves the right to make such changes as required. Unless otherwise stated, all specifications are nominal. Pasternack does not make any representation or warranty regarding the suitability of the part described herein for any particular purpose, and Pasternack does not assume any liability arising out of the use of any part or documentation.

PE3W11596 CAD Drawing

3.5mm Male to 1.85mm Female Bulkhead Cable Using Tinned RG405 Coax



# Mouser Electronics

Authorized Distributor

Click to View Pricing, Inventory, Delivery & Lifecycle Information:

[Pasternack:](#)

[PE3W11596-12](#)