



BNC Female Bulkhead to SMA Male Cable 12 Inch Length Using RG58 Coax

RF Cable Assemblies Technical Data Sheet

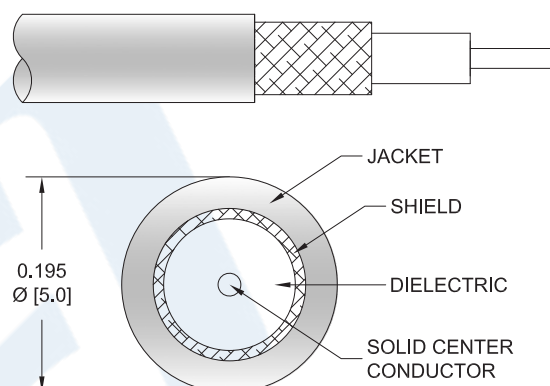
PE3W01634-12

Configuration

- Connector 1: BNC Female Bulkhead Isolated Ground
- Connector 2: SMA Male
- Cable Type: RG58

Features

- Max Frequency 1 GHz
- 65.9% Phase Velocity
- PVC (NC) Jacket



Applications

- General Purpose
- Laboratory Use

Description

Pasternack's PE3W01634-12 BNC female bulkhead to SMA male 12 inch cable using RG58 coax is part of our full line of RF components available for same-day shipping. Pasternack's flexible RF cable assemblies are ideal for applications where tight bends and flexure are required. This Pasternack BNC to SMA cable assembly has a female to male gender configuration with 50 ohm flexible RG58 coax. The PE3W01634-12 BNC female to SMA male cable assembly operates to 1 GHz. Our RF cable assembly with BNC bulkhead interface allows designers to create external connections on their product enclosures, and can be used in a variety of other rack mount and panel mount applications.

Custom versions of most RF cable assemblies can be built and shipped same day. Custom cable assembly lengths can be obtained by specifying the desired length on the web site at time of order or by contacting a sales representative. Other available RF cable assembly value added services include connector orientation or clocking, heat shrink booting and custom labeling. RF testing can also be performed to document the electrical performance of your cable assembly.

Electrical Specifications

| Description | Minimum | Typical | Maximum | Units |
|-------------------------|---------|---------------|---------|--------------|
| Frequency Range | DC | | 1,000 | MHz |
| VSWR | | | 1.5:1 | |
| Velocity of Propagation | | 65.9 | | % |
| Capacitance | | 30.8 [101.05] | | pF/ft [pF/m] |

Click the following link (or enter part number in "SEARCH" on website) to obtain additional part information including price, inventory and certifications: [BNC Female Bulkhead to SMA Male Cable 12 Inch Length Using RG58 Coax PE3W01634-12](#)



BNC Female Bulkhead to SMA Male Cable
12 Inch Length Using RG58 Coax

RF Cable Assemblies Technical Data Sheet

PE3W01634-12

Specifications by Frequency

| Description | F1 | F2 | F3 | F4 | F5 | Units |
|-----------------------|------|------|------|------|-------|-------|
| Frequency | 50 | 100 | 250 | 500 | 1,000 | MHz |
| Insertion Loss (Max.) | 0.23 | 0.25 | 0.26 | 0.31 | 0.4 | dB |

Electrical Specification Notes:

The Insertion Loss data above is based on the performance specifications of the coax use in this assembly. The Insertion Loss includes an estimated insertion loss of 0.2dB of connector Loss

Mechanical Specifications

Cable Assembly

| | |
|----------|---------------------|
| Length* | 12 in [304.8 mm] |
| Diameter | 0.611 in [15.52 mm] |

Cable

| | |
|--------------------------------------|---------------------|
| Cable Type | RG58 |
| Impedance | 50 Ohms |
| Inner Conductor Type | Stranded |
| Inner Conductor Material and Plating | Copper, Tin |
| Dielectric Type | PE |
| Number of Shields | 1 |
| Shield Layer 1 | Tinned Copper Braid |
| Jacket Material | PVC (NC), Black |
| Jacket Diameter | 0.195 in [4.95 mm] |

| | |
|------------------------------|--------------------|
| One Time Minimum Bend Radius | 0.98 in [24.89 mm] |
| Repeated Minimum Bend Radius | 1.96 in [49.78 mm] |

Click the following link (or enter part number in "SEARCH" on website) to obtain additional part information including price, inventory and certifications: [BNC Female Bulkhead to SMA Male Cable 12 Inch Length Using RG58 Coax PE3W01634-12](#)



BNC Female Bulkhead to SMA Male Cable 12 Inch Length Using RG58 Coax

RF Cable Assemblies Technical Data Sheet

PE3W01634-12

Connectors

| Description | Connector 1 | Connector 2 |
|--------------------------------------|-------------------------------------|--------------------|
| Type | BNC Female Bulkhead Isolated Ground | SMA Male |
| Specification | | MIL-STD-348A |
| Impedance | 50 Ohms | 50 Ohms |
| Color | | |
| Isolated Ground/Hermetic Seal | Isolated Ground | |
| Contact Material and Plating | Phosphor Bronze, Gold | Brass, Gold |
| Contact Plating Specification | | 50 µin minimum |
| Dielectric Type | Teflon | PTFE |
| Outer Conductor Material and Plating | Brass, Nickel | |
| Body Material and Plating | Brass, Nickel | Brass, Nickel |
| Body Plating Specification | | 100 µin minimum |
| Coupling Nut Material and Plating | | Brass, Nickel |
| Coupling Nut Plating Specification | | 100 µin minimum |
| Hex Size | | 5/16 inch |
| Torque | | 3 in-lbs [0.34 Nm] |

Mechanical Specification Notes:

*All cable assemblies have a length tolerance of 1.5% or $\pm 3/8"$, whichever is greater.

Compliance Certifications (see [product page](#) for current document)

Plotted and Other Data

Notes:

Click the following link (or enter part number in "SEARCH" on website) to obtain additional part information including price, inventory and certifications: [BNC Female Bulkhead to SMA Male Cable 12 Inch Length Using RG58 Coax PE3W01634-12](#)



BNC Female Bulkhead to SMA Male Cable 12 Inch Length Using RG58 Coax

RF Cable Assemblies Technical Data Sheet

PE3W01634-12

How to Order

Part Number Configuration:

PE3W01634

- **xx**

uu

Unit of Measure:
cm = Centimeters
<blank> = Inches
Length
Base Number

Example: PE3W01634-12 = 12 inches long cable
PE3W01634-100cm = 100 cm long cable

BNC Female Bulkhead to SMA Male Cable 12 Inch Length Using RG58 Coax from Pasternack Enterprises has same day shipment for domestic and International orders. Our RF, microwave and millimeter wave products maintain a 99.4% availability and are part of the broadest selection in the industry.

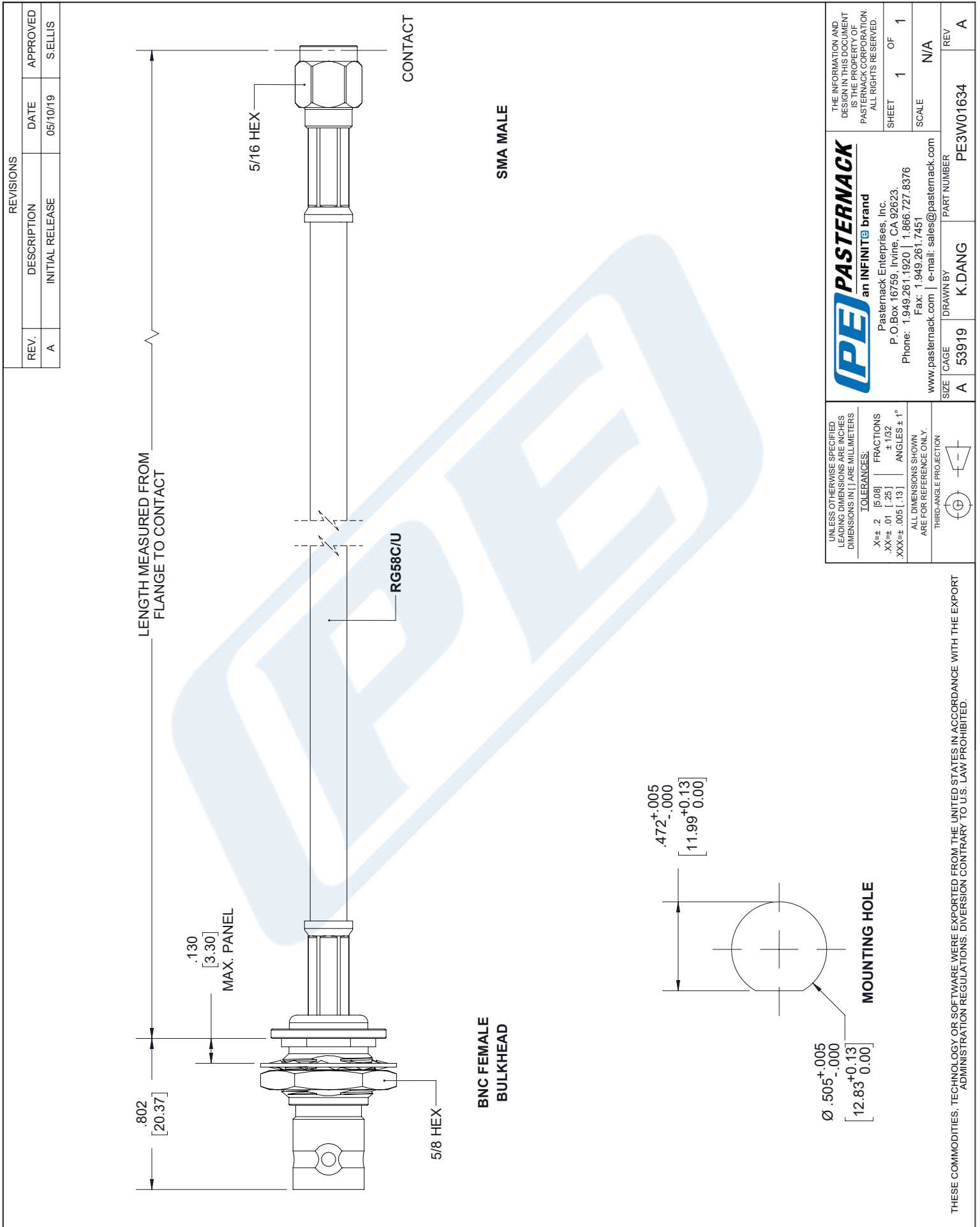
Click the following link (or enter part number in "SEARCH" on website) to obtain additional part information including price, inventory and certifications: [BNC Female Bulkhead to SMA Male Cable 12 Inch Length Using RG58 Coax PE3W01634-12](https://www.pasternack.com/bnc-female-sma-male-rg58cu-cable-assembly-pe3w01634-12-p.aspx)

URL: <https://www.pasternack.com/bnc-female-sma-male-rg58cu-cable-assembly-pe3w01634-12-p.aspx>

The information contained in this document is accurate to the best of our knowledge and representative of the part described herein. It may be necessary to make modifications to the part and/or the documentation of the part, in order to implement improvements. Pasternack reserves the right to make such changes as required. Unless otherwise stated, all specifications are nominal. Pasternack does not make any representation or warranty regarding the suitability of the part described herein for any particular purpose, and Pasternack does not assume any liability arising out of the use of any part or documentation.

PE3W01634-12 CAD Drawing

BNC Female Bulkhead to SMA Male Cable 12 Inch Length Using RG58 Coax



Mouser Electronics

Authorized Distributor

Click to View Pricing, Inventory, Delivery & Lifecycle Information:

[Pasternack:](#)

[PE3W01634-12](#)