

## SMA Female Bulkhead to MCX Plug Right Angle Cable Using RG405 Coax

### PE3C3797

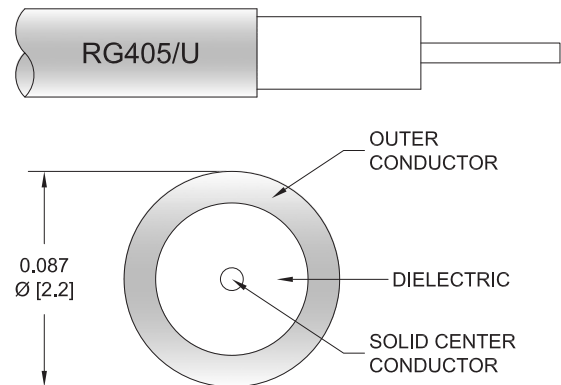


#### Configuration

- Connector 1: SMA Female Bulkhead
- Connector 2: MCX Plug Right Angle
- Cable Type: RG405
- Coax Flex Type: Semi-Rigid

#### Features

- Max Frequency 6 GHz
- 69.5% Phase Velocity



#### Applications

- General Purpose
- Laboratory Use

#### Description

Pasternack's PE3C3797 SMA female bulkhead to MCX plug right angle cable using RG405 coax is part of our full line of RF components available for same-day shipping. Pasternack's semi-rigid RF cable assemblies are ideal for high performance applications and can be formed, using proper tooling, to the routing pattern required. This Pasternack SMA to MCX cable assembly has a female to plug gender configuration with 50 ohm semi-rigid RG405 coax. The PE3C3797 SMA female to MCX plug cable assembly operates to 6 GHz. The right angle MCX interface on the RG405 cable allows for easier connections in tight spaces. Our RF cable assembly with SMA bulkhead interface allows designers to create external connections on their product enclosures, and can be used in a variety of other rack mount and panel mount applications.

Custom versions of most RF cable assemblies can be built and shipped same day. Custom cable assembly lengths can be obtained by specifying the desired length on the web site at time of order or by contacting a sales representative. Other available RF cable assembly value added services include connector orientation or clocking, heat shrink booting and custom labeling. RF testing can also be performed to document the electrical performance of your cable assembly.

#### Electrical Specifications

Description	Minimum	Typical	Maximum	Units
Frequency Range	DC		6	GHz
VSWR			1.5:1	
Velocity of Propagation		69.5		%
Capacitance		29.4 [96.46]		pF/ft [pF/m]
Dielectric Withstanding Voltage (AC)			750	Vrms

#### Specifications by Frequency

## SMA Female Bulkhead to MCX Plug Right Angle Cable Using RG405 Coax



### PE3C3797

Part Number	Length	Description	F1	F2	F3	F4	F5	Units	Weight (lbs)
		Frequency	250	500	1000	2500	6000	MHz	
PE3C3797	Custom Lengths Available	Insertion Loss (Typ.)	0.06	0.11	0.22	0.32	0.542	dB/ft	
			0.19	0.37	0.73	1.04	1.78	dB/m	
PE3C3797-6	6 inch	Insertion Loss (Typ.)	0.33	0.36	0.41	0.46	0.58	dB	0.024
PE3C3797-12	12 inch	Insertion Loss (Typ.)	0.36	0.41	0.52	0.62	0.85	dB	0.03
PE3C3797-18	18 inch	Insertion Loss (Typ.)	0.39	0.47	0.63	0.78	1.12	dB	0.037
PE3C3797-24	24 inch	Insertion Loss (Typ.)	0.41	0.52	0.74	0.94	1.39	dB	0.044
PE3C3797-36	36 inch	Insertion Loss (Typ.)	0.47	0.63	0.96	1.25	1.93	dB	0.057

The insertion loss data for the base model does not include loss due to the connectors. Each length includes insertion loss due to the connectors.

Loss due to Connector 1:	0.1 dB
Loss due to Connector 2:	0.2 dB
Base Weight:	0.03 pounds
Additional Weight per Inch:	0.00109 pounds

### Mechanical Specifications

#### Cable Assembly

Width/Diameter	0.5 in [12.7 mm]
Weight	0.03 lbs [13.61 g]

#### Cable

Cable Type	RG405
Impedance	50 Ohms
Inner Conductor Type	Solid
Inner Conductor Material and Plating	Copper Clad Steel, Silver
Dielectric Type	PTFE
Number of Shields	1
Outer Conductor 1 Material and Plating	Copper
Jacket Material	Tan
Repeated Minimum Bend Radius	0.05 in [1.27 mm]

### Connectors

Description	Connector 1	Connector 2
Type	SMA Female Bulkhead	MCX Plug Right Angle
Specification	MIL-STD-348A	
Impedance	50 Ohms	50 Ohms
Configuration	Straight	Right Angle
Contact Material and Plating	Beryllium Copper, Gold	Brass, Gold over Nickel
Contact Plating Specification	50 µin minimum	
Dielectric Type	PTFE	PTFE
Body Material and Plating	Stainless Steel, Gold	Brass, Gold over Nickel
Body Plating Specification	30 µin minimum	

## SMA Female Bulkhead to MCX Plug Right Angle Cable Using RG405 Coax



### PE3C3797

#### Environmental Specifications

**Compliance Certifications** (see [product page](#) for current document)

#### Plotted and Other Data

Notes:

#### Typical Performance Data

#### How to Order

Part Number Configuration:

**PE3C3797 - xx uu**

Unit of Measure:  
cm = Centimeters  
<blank> = Inches  
Length  
Base Number

Example: PE3C3797-12 = 12 inches long cable  
PE3C3797-100cm = 100 cm long cable

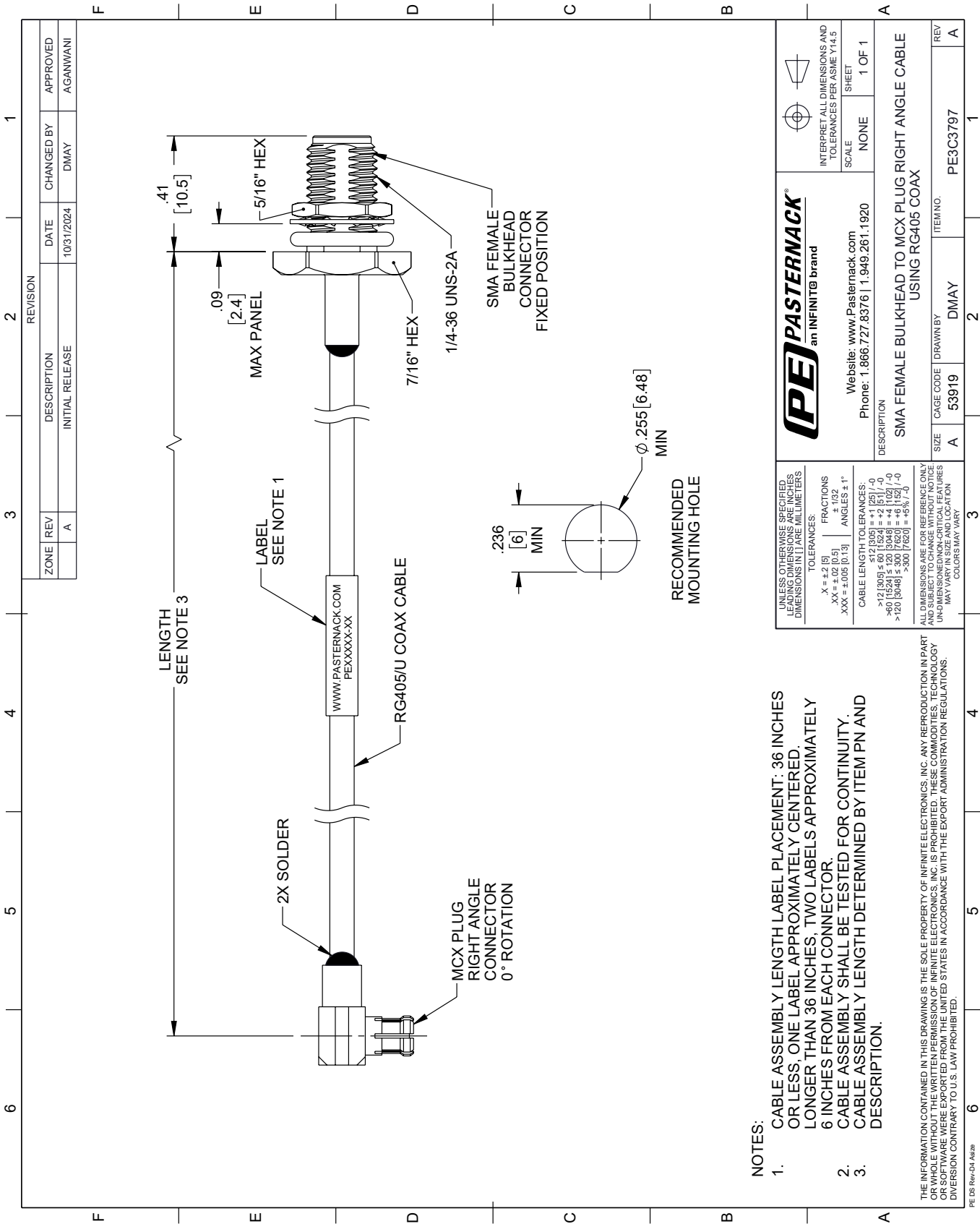
SMA Female Bulkhead to MCX Plug Right Angle Cable Using RG405 Coax from Pasternack Enterprises has same day shipment for domestic and International orders. Our RF, microwave and millimeter wave products maintain a 99.4% availability and are part of the broadest selection in the industry.

Click the following link (or enter part number in "SEARCH" on website) to obtain additional part information including price, inventory and certifications: [SMA Female Bulkhead to MCX Plug Right Angle Cable Using RG405 Coax PE3C3797](#)

URL: <https://www.pasternack.com/sma-female-bulkhead-to-mcx-plug-cable-using-rg405-pe3c3797-p.aspx>

The information contained within this document is accurate to the best of our knowledge and representative of the part described herein. It may be necessary to make modifications to the part and/or the documentation of the part in order to implement improvements. Pasternack Enterprises reserves the right to make such changes as required. Unless otherwise stated, all specifications are nominal. Pasternack Enterprises does not make any representation or warranty regarding the suitability of the part described herein for any particular purpose, and Pasternack Enterprises does not assume liability arising out of the use of any part or document.

PE3C3797 CAD Drawing
SMA Female Bulkhead to MCX Plug Right Angle Cable Using RG405 Coax



- 1. CABLE ASSEMBLY LENGTH LABEL PLACEMENT: 36 INCHES OR LESS, ONE LABEL APPROXIMATELY CENTERED. LONGER THAN 36 INCHES, TWO LABELS APPROXIMATELY 6 INCHES FROM EACH CONNECTOR.
- 2. CABLE ASSEMBLY SHALL BE TESTED FOR CONTINUITY.
- 3. CABLE ASSEMBLY LENGTH DETERMINED BY ITEM PN AND DESCRIPTION.

THE INFORMATION CONTAINED IN THIS DRAWING IS THE SOLE PROPERTY OF INFINITE ELECTRONICS, INC. ANY REPRODUCTION IN PART OR WHOLE WITHOUT THE WRITTEN PERMISSION OF INFINITE ELECTRONICS, INC. IS PROHIBITED. THESE COMMODITIES, TECHNOLOGY OR SOFTWARE WERE EXPORTED FROM THE UNITED STATES IN ACCORDANCE WITH THE EXPORT ADMINISTRATION REGULATIONS. DIVISION CONTRARY TO U.S. LAW PROHIBITED.

UNLESS OTHERWISE SPECIFIED, LEADING DIMENSIONS ARE IN INCHES. DIMENSIONS IN [ ] ARE IN MILLIMETERS.		<b>PE PASTERNAK</b> an INFINITE® brand		INTERPRET ALL DIMENSIONS AND TOLERANCES PER ASME Y14.5	
TOLERANCES:		Website: <a href="http://www.Pasternack.com">www.Pasternack.com</a>		SCALE: NONE	
X = ±.2 [5]		Phone: 1.866.727.8376   1.949.261.1920		SHEET 1 OF 1	
.XX = ±.02 [0.5]					
.XXX = ±.005 [0.13]					
ANGLES ± 1°					
CABLE LENGTH TOLERANCES:					
>12 [305] ≤ 60 [1524] = ±.125 [-0]					
>60 [1524] ≤ 120 [3048] = ±.125 [-0]					
>120 [3048] ≤ 300 [7620] = ±.125 [-0]					
>300 [7620] = ±.125 [-0]					
ALL DIMENSIONS ARE FOR REFERENCE ONLY. DIMENSIONS OF NON-CRITICAL FEATURES MAY VARY IN SIZE AND LOCATION. COLORS MAY VARY.					
DESCRIPTION		SMA FEMALE BULKHEAD TO MCX PLUG RIGHT ANGLE CABLE USING RG405 COAX			
SIZE		A 53919		ITEM NO. PE3C3797	
DRAWN BY		DMAY		REV A	

# Mouser Electronics

Authorized Distributor

Click to View Pricing, Inventory, Delivery & Lifecycle Information:

[Pasternack:](#)

[PE3C3797-12](#)