

## SMA Female to SMA Female Cable 6 Inch Length Using PE-047SR Coax

### TECHNICAL DATA SHEET

**PE3758-6**

#### Configuration

- Connector 1: SMA Female
- Connector 2: SMA Female
- Cable Type: PE-047SR
- Coax Flex Type: Semi-Rigid

#### Features

- Max Frequency 18 GHz

#### Applications

- General Purpose
- Laboratory Use

#### Description

Pasternack's PE3758-6 SMA female to SMA female 6 inch cable using PE-047SR coax is part of our full line of RF components available for same-day shipping. Pasternack's semi-rigid RF cable assemblies are ideal for high performance applications and can be formed, using proper tooling, to the routing pattern required. This Pasternack SMA to SMA cable assembly has a female to female gender configuration with 50 ohm semi-rigid PE-047SR coax. The PE3758-6 SMA female to SMA female cable assembly operates to 18 GHz.

Custom versions of most RF cable assemblies can be built and shipped same day. Custom cable assembly lengths can be obtained by specifying the desired length on the web site at time of order or by contacting a sales representative. Other available RF cable assembly value added services include connector orientation or clocking, heat shrink booting and custom labeling. RF testing can also be performed to document the electrical performance of your cable assembly.

#### Electrical Specifications

Description	Minimum	Typical	Maximum	Units
Frequency Range	DC		18	GHz
VSWR			1.5:1	
Dielectric Withstanding Voltage (AC)			2,000	Vrms

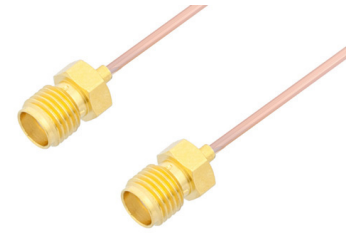
#### Specifications by Frequency

Description	F1	F2	F3	F4	F5	Units
Frequency	1	2	4.5	9	18	GHz
Insertion Loss (Typ.)	0.4	0.45	0.58	0.8	1.05	dB

#### Electrical Specification Notes:

The Insertion Loss data above is based on the performance specifications of the coax and connectors used in this assembly. The Insertion Loss includes an estimated insertion loss of 0.1 dB per connector.

Click the following link (or enter part number in "SEARCH" on website) to obtain additional part information including price, inventory and certifications: [SMA Female to SMA Female Cable 6 Inch Length Using PE-047SR Coax PE3758-6](#)



SMA Female to SMA Female Cable 6 Inch  
Length Using PE-047SR Coax

**TECHNICAL DATA SHEET**

**PE3758-6**

**Mechanical Specifications**

**Cable Assembly**

Length\* 6 in [152.4 mm]

Weight 0.01 lbs [4.54 g]

**Cable**

Cable Type PE-047SR

Impedance 50 Ohms

Inner Conductor Type Solid

Inner Conductor Material and Plating Copper Clad Steel, Silver

Dielectric Type PTFE

Number of Shields 1

Outer Conductor Material and Plating Copper

Repeated Minimum Bend Radius 0.05 in [1.27 mm]

**Connectors**

Description	Connector 1	Connector 2
Type	SMA Female Threaded	SMA Female Threaded
Specification	MIL-STD-348	MIL-STD-348
Impedance	50 Ohms	50 Ohms
Contact Material and Plating	Beryllium Copper, Gold	Beryllium Copper, Gold
Contact Plating Specification	MIL-G-45204	MIL-G-45204
Dielectric Type	PTFE	PTFE
Body Material and Plating	Brass, Gold	Brass, Gold
Body Plating Specification	MIL-G-45204	MIL-G-45204

**Environmental Specifications**

**Temperature**

Operating Range -55 to +100 deg C

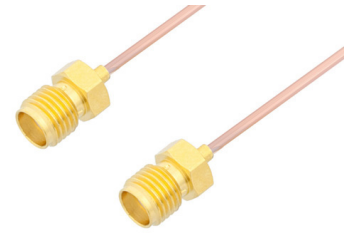
**Compliance Certifications** (see [product page](#) for current document)

**Plotted and Other Data**

Notes:

- Values at 25°C, sea level.

Click the following link (or enter part number in "SEARCH" on website) to obtain additional part information including price, inventory and certifications: [SMA Female to SMA Female Cable 6 Inch Length Using PE-047SR Coax PE3758-6](#)



## SMA Female to SMA Female Cable 6 Inch Length Using PE-047SR Coax

### TECHNICAL DATA SHEET

**PE3758-6**

#### How to Order

Part Number Configuration:

**PE3758**

- **xx**

**uu**

Unit of Measure:  
cm = Centimeters  
<blank> = Inches  
Length  
Base Number

Example: PE3758-12 = 12 inches long cable  
PE3758-100cm = 100 cm long cable

SMA Female to SMA Female Cable 6 Inch Length Using PE-047SR Coax from Pasternack Enterprises has same day shipment for domestic and International orders. Our RF, microwave and millimeter wave products maintain a 99.4% availability and are part of the broadest selection in the industry.

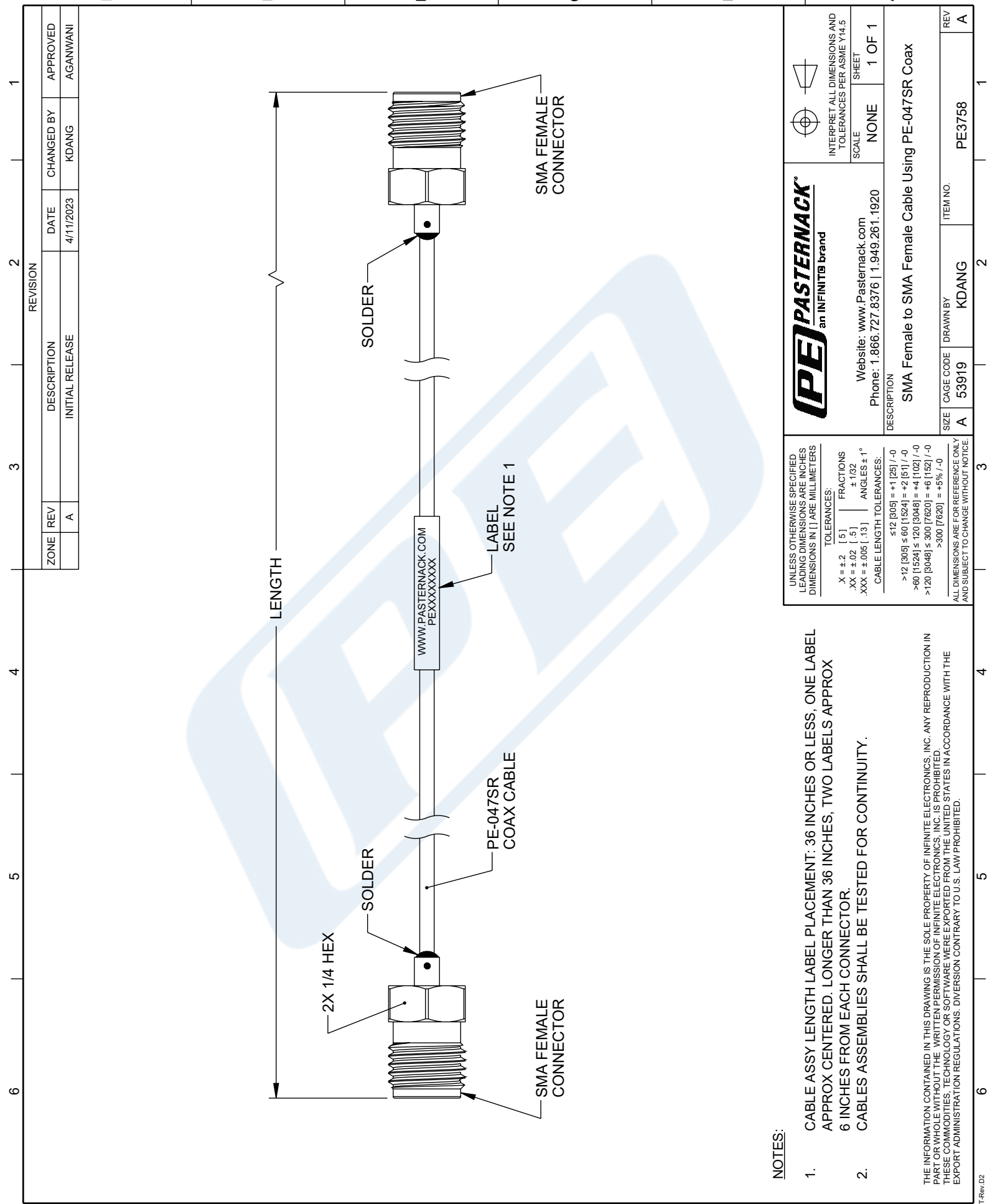
Click the following link (or enter part number in "SEARCH" on website) to obtain additional part information including price, inventory and certifications: [SMA Female to SMA Female Cable 6 Inch Length Using PE-047SR Coax PE3758-6](#)

URL: <https://www.pasternack.com/sma-female-sma-female-pe-047sr-cable-assembly-pe3758-6-p.aspx>

The information contained in this document is accurate to the best of our knowledge and representative of the part described herein. It may be necessary to make modifications to the part and/or the documentation of the part, in order to implement improvements. Pasternack reserves the right to make such changes as required. Unless otherwise stated, all specifications are nominal. Pasternack does not make any representation or warranty regarding the suitability of the part described herein for any particular purpose, and Pasternack does not assume any liability arising out of the use of any part or documentation.

PE3758-6 CAD Drawing


SMA Female to SMA Female Cable 6 Inch Length Using PE-047SR Coax



NOTES:

1. CABLE ASSY LENGTH LABEL PLACEMENT: 36 INCHES OR LESS, ONE LABEL APPROX CENTERED. LONGER THAN 36 INCHES, TWO LABELS APPROX 6 INCHES FROM EACH CONNECTOR.
2. CABLES ASSEMBLIES SHALL BE TESTED FOR CONTINUITY.

THE INFORMATION CONTAINED IN THIS DRAWING IS THE SOLE PROPERTY OF INFINITE ELECTRONICS, INC. ANY REPRODUCTION IN PART OR WHOLE WITHOUT THE WRITTEN PERMISSION OF INFINITE ELECTRONICS, INC. IS PROHIBITED. THESE COMMODITIES, TECHNOLOGY OR SOFTWARE WERE EXPORTED FROM THE UNITED STATES IN ACCORDANCE WITH THE EXPORT ADMINISTRATION REGULATIONS. DIVERSION CONTRARY TO U.S. LAW PROHIBITED.

				INTERPRET ALL DIMENSIONS AND TOLERANCES PER ASME Y14.5	
UNLESS OTHERWISE SPECIFIED LEADING DIMENSIONS ARE INCHES DIMENSIONS IN [ ] ARE MILLIMETERS		Website: <a href="http://www.Pasternack.com">www.Pasternack.com</a> Phone: 1.866.727.8376   1.949.261.1920		SCALE NONE	
TOLERANCES: .X = ±.2 [ .5 ] .XX = ±.02 [ .5 ] .XXX = ±.005 [ .13 ]		FRACTIONS ± 1/32 ANGLES ± 1°		SHEET 1 OF 1	
CABLE LENGTH TOLERANCES: ≤12 [305] = +1 [25] / -0 >12 [305] ≤ 60 [1524] = +2 [51] / -0 >60 [1524] ≤ 120 [3048] = +4 [102] / -0 >120 [3048] ≤ 300 [7620] = +6 [152] / -0 >300 [7620] = +5% / -0		DESCRIPTION SMA Female to SMA Female Cable Using PE-047SR Coax			
ALL DIMENSIONS ARE FOR REFERENCE ONLY AND SUBJECT TO CHANGE WITHOUT NOTICE		SIZE A		CAGE CODE 53919	
		DRAWN BY KDANG		ITEM NO. PE3758	
				REV A	

# Mouser Electronics

Authorized Distributor

Click to View Pricing, Inventory, Delivery & Lifecycle Information:

[Pasternack:](#)

[PE3758-6](#)