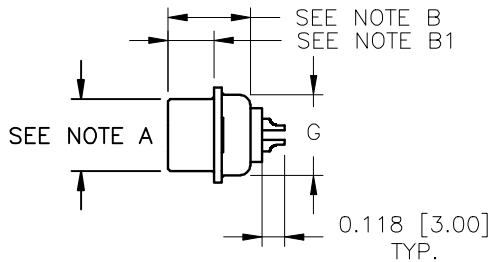
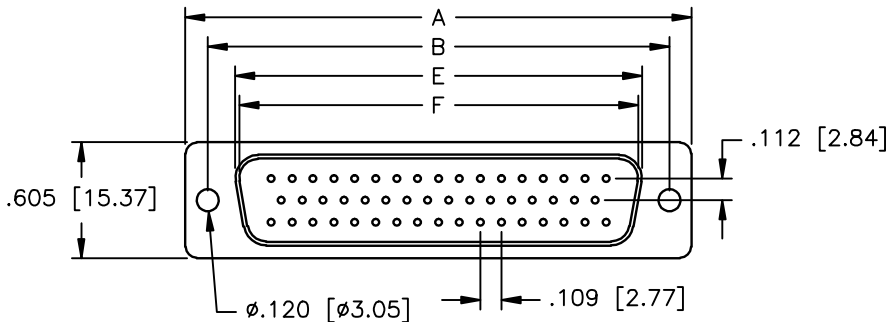
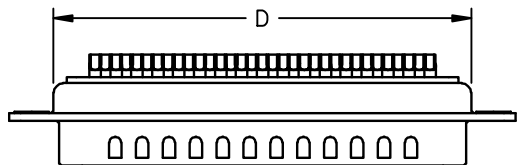


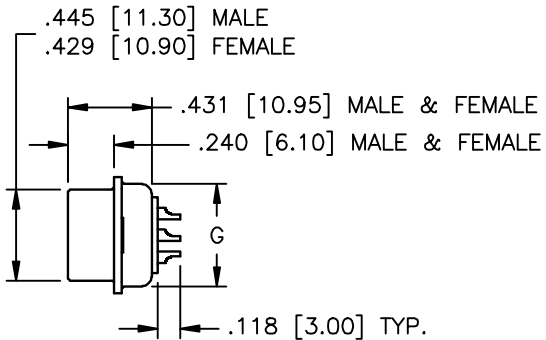
9 THROUGH 37 POSITION



NOTE A: 9, 15, 25 & 37 MALE: 0.327 [8.30]
9, 15, 25 & 37 FEMALE: 0.311 [7.90]
NOTE B: 9, 15, 25 & 37 MALE: 0.431 [10.95]
9, 15, 25 & 37 FEMALE: 0.423 [10.75]
NOTE B1: 9, 15, 25 & 37 MALE: 0.236 [5.99]
9, 15, 25 & 37 FEMALE: 0.236 [5.99]



50 POSITION



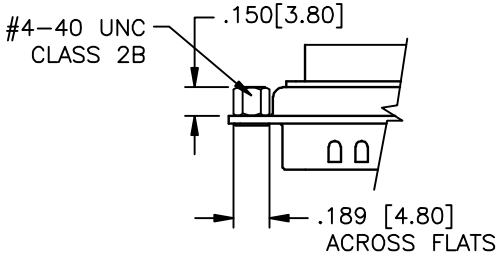
REVISIONS				
ZONE	REV	DESCRIPTION	DATE	APPROVED

D SERIES CONNECTORS		DIMENSIONS INCHES [MM]						
No. of Contacts	Shell Size	A ±0.010 [±0.254]	B ±0.010 [±0.254]	C ±0.010 [±0.254]	D ±0.010 [±0.254]	E Max. Female ±0.010 [±0.254]	F Min. Male ±0.010 [±0.254]	G ±0.010 [±0.254]
09	E	1.213 [30.81]	0.984 [24.99]	0.494 [12.55]	0.759 [19.28]	0.643 [16.33]	0.666 [16.92]	0.422 [10.72]
15	A	1.541 [39.14]	1.310 [33.27]	0.494 [12.55]	1.089 [27.65]	0.971 [24.66]	0.994 [25.25]	0.422 [10.72]
25	B	2.088 [53.04]	1.850 [46.99]	0.494 [12.55]	1.626 [41.30]	1.511 [38.38]	1.534 [38.96]	0.422 [10.72]
37	C	2.730 [69.34]	2.500 [63.50]	0.494 [12.55]	2.261 [57.44]	2.159 [54.84]	2.182 [55.42]	0.422 [10.72]
50	D	2.638 [67.00]	2.406 [61.11]	0.605 [15.37]	2.178 [55.32]	2.064 [52.43]	2.079 [52.81]	0.527 [13.40]

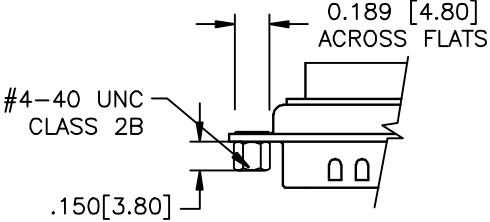
THIS IS A CONTROLLED DOCUMENT AND IS
SUBJECT TO CHANGE. CONTACT NORTHERN
TECHNOLOGIES ENGINEERING FOR THE
LATEST REVISION.

UNLESS OTHERWISE SPECIFIED		Northern Technologies			
1. ALL DIMENSIONS ARE IN INCHES (MM) 2. DIMENSIONS ARE TYPICAL		THIS DRAWING IS THE PROPERTY OF NORTHERN TECHNOLOGIES AND SHOULD NOT BE REPRODUCED WITHOUT NORTHERN TECHNOLOGIES WRITTEN PERMISSION.			
DRAWN JSD		13-OCT-05		PART NUMBER SEE ORDER INFORMATION	
CHECKED SCN		13-OCT-05		DESCRIPTION DE SERIES CONNECTORS	
ISSUED		13-OCT-05		SIZE B	CODE 200_155
				DWG NO.	0002-200-155
				SCALE 1:1	REV
				SHEET 1 OF 2	

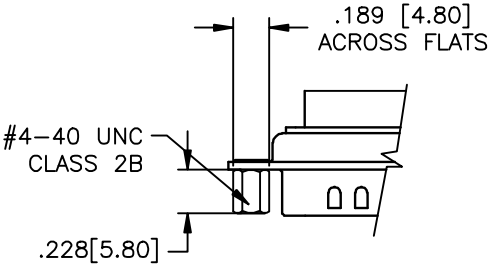
'C' CLINCH NUT OPTION



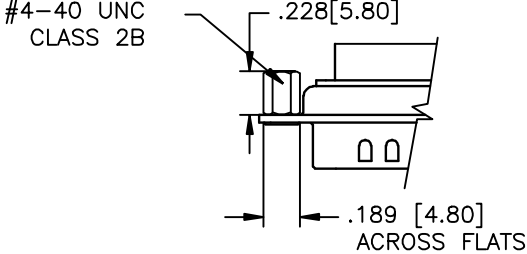
'D' CLINCH NUT OPTION



'E' CLINCH NUT OPTION



'F' CLINCH NUT OPTION



NOTES:

1. SHELL MATERIAL: STEEL
2. SHELL FINISH: SEE ORDER INFORMATION
3. INSULATOR MATERIAL: THERMOPLASTIC / PBT UL94V-0
4. INSULATOR COLOR: BLACK
5. CONTACTS: COPPER ALLOY
6. VOLTAGE RATING: 250 VAC
7. CURRENT RATING: 3 AMPS MAX
8. CONTACT RESISTANCE: 15 MILLIOHMS MAX.
9. INSULATION RESISTANCE: 3000 MEGOHMS @ 500 VDC
10. DIELECTRIC WITHSTANDING VOLTAGE: 1000 VAC / 1 MINUTE
11. TEMPERATURE RANGE: -55° TO +105° CENTIGRADE

THIS IS A CONTROLLED DOCUMENT AND IS
SUBJECT TO CHANGE. CONTACT NORTHERN
TECHNOLOGIES ENGINEERING FOR THE
LATEST REVISION.

REVISIONS

ZONE	REV	DESCRIPTION	DATE	APPROVED
	A	ECN 0594	08-MAY-06	
	B	ECN 0619	25-AUG-06	
	C	ECN 0639	05-DEC-07	
	D	ECN 0654	16-MAY-08	
	E	ECN 0714	21-NOV-12	
	F	ECN 0737	27-FEB-14	
	G	ECN 0766	18-FEB-15	

ORDER INFORMATION

FACTORY DESIGNATOR
LEAVE BLANK ()

() D E 25 P TE S C S30

SERIES

RoHS

NO. OF CONTACTS

P: MALE

S: FEMALE

[CONTACT PLATING]

EMPTY: GOLD FLASH OVER NICKEL - ENTIRE CONTACT

S: GOLD FLASH AT MATING END - TINNED SOLDER CUP
(STAMPED AND FORMED CONTACTS OPTION)

S15: 15ui GOLD AT MATING END - TINNED SOLDER CUP

S30: 30ui GOLD AT MATING END - TINNED SOLDER CUP

[CONTACT FACTORY FOR OTHER PLATING OPTIONS]

EMPTY: NO OPTIONS

C: REAR MOUNT CLINCH NUT .150 [3.80]

D: FRONT MOUNT CLINCH NUT 0.150 [3.80]

E: FRONT MOUNT CLINCH NUT 0.228 [5.80]

F: REAR MOUNT CLINCH NUT 0.228 [5.80]

S: STAMPED AND FORMED CONTACTS

M: MACHINED CONTACTS

TE: TIN PLATED WITH
GROUNDING INDENTS
(MALE ONLY)

T: TIN PLATED NO
GROUNDING INDENTS
(FEMALE ONLY)

NE: NICKEL PLATED WITH
GROUNDING INDENTS
(MALE ONLY)

N: NICKEL PLATED NO
GROUNDING INDENTS
(FEMALE ONLY)

UNLESS OTHERWISE
SPECIFIED

1. ALL DIMENSIONS ARE IN
INCHES (MM)
2. DIMENSIONS ARE TYPICAL

DRAWN JSD

13-OCT-05

CHECKED SCN

13-OCT-05

ISSUED

13-OCT-05

Northern
Technologies

THIS DRAWING IS THE PROPERTY OF
NORTHERN TECHNOLOGIES AND SHOULD
NOT BE REPRODUCED WITHOUT NORTHERN
TECHNOLOGIES WRITTEN PERMISSION.

PART NUMBER SEE ORDER INFORMATION

DESCRIPTION DE SERIES CONNECTORS

SIZE
B

CODE
200_155

DWG NO.
0002-200-155

REV

SCALE 1:1

SHEET 2 OF 2

Mouser Electronics

Authorized Distributor

Click to View Pricing, Inventory, Delivery & Lifecycle Information:

[Northern Technologies:](#)

[DE25STS](#) [DE37STS](#) [DE50STS](#) [DE25PTES](#) [DE9STS](#) [DE15PTES](#) [DE25PNES](#) [DE50PTES](#) [DE25SNS](#) [DE9PNES](#)
[DE15STS](#) [DE9PTES](#) [DE37PTES](#) [DE37SNS](#) [DE37PNES](#) [DE15SNS](#) [DE15PNES](#) [DE9SNS](#) [DE50PNES](#)
[DE50SNS](#)