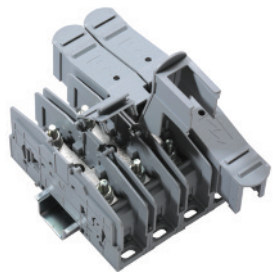


PTB series Terminal Blocks are preferred for applications using wires of large cross section. The Wire is crimped to a ring / fork lug and is screwed on to the flat current bar of the Terminal Block. Specially designed Mounting Feet hold the Terminal Block rigidly on to the Mounting Rail.

Two Lugs of 35 sq.mm can be connected to the Terminal Block, without sacrificing the safety of the Terminal Block. Hinged Protective Cover makes the Terminal Block shock proof (finger safe) and has marker recess to accept marking tags.

The Terminal Blocks can be stacked together by pressing the adjacent Terminal Blocks firmly. In PTB35SH series Terminal Blocks, adjacent terminals can be shorted by removing a thin wall partition and using 2/3/4 way shorting link.

\* Optional Marker Holder can be used for installing marking tags on the Terminal Blocks without protective covers.



Terminal Width

Height x Length

Stripping Length

Insulation Material

Type of Connection

Approvals

Wire Range

Voltage Rating

Current Rating

Torque

Other Approvals

#### Terminal Block

DIN Rail  
for ordering information  
refer to pages 90-91

End Stop  
for ordering information  
refer to page 92



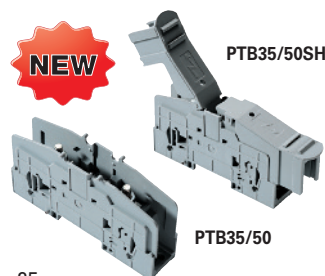
Bolt Size

Current Bars 2 pole  
3 pole  
4 pole

Marking Tags

Marking Tag Holder

#### PTB35/50 / PTB35/50SH



25 mm

73.6 x 169 mm

18 mm / M6

Polyamide 6.6

2 bolts for connection

C US	60947-7-1	C US
E220514		E220514
8-2 AWG	1.5-50 mm <sup>2</sup>	8-2 AWG
600 V	1000 V	600 V
115 A	150 A	115 A
27 lb-in	3.0 Nm	27 lb-in



Cat. No.

Std. Pk.

PTB35/50  
PTB35/50SH

10  
10



CA102  
CA202

50  
50

M6

—

CA703/9  
CA704/9  
CA705/9

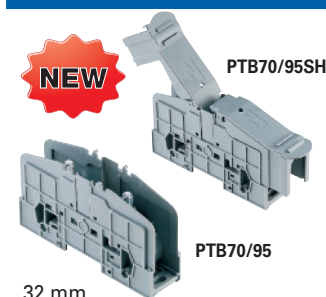
10  
10  
10

MT9

100

MHPTB35\*

#### PTB70/95 / PTB70/95SH



32 mm

78 x 192 mm

18 mm / M6

Polyamide 6.6

2 bolts for connection

C US	60947-7-1	C US
E220514		E220514
8-4/0 AWG	1.5-95 mm <sup>2</sup>	8-4/0 AWG
600 V	1000 V	600 V
230 A	232 A	230 A
87 lb-in	10.0 Nm	87 lb-in

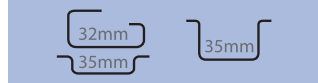


Cat. No.

Std. Pk.

PTB70/95  
PTB70/95SH

10  
10



CA102  
CA202

50  
50

M8

—

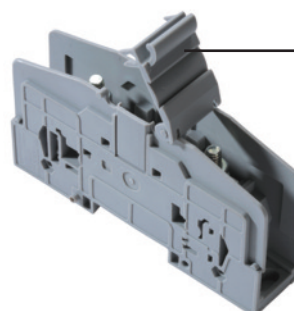
CA703/11  
CA704/11  
CA705/11

10  
10  
10

MT9

100

MHPTB70\*



Marker Holder

# Mouser Electronics

Authorized Distributor

Click to View Pricing, Inventory, Delivery & Lifecycle Information:

[Altech:](#)

[PTB35/50](#) [PTB70/95SH](#) [PTB35/50SH](#) [PTB70/95](#) [MHPTB35/50](#) [MHPTB70/95](#)