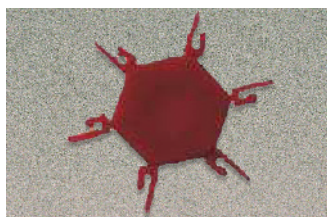


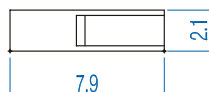
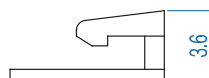
Coding Spline  
Working Temp: 125°C  
Color: Red  
Body: PA66/6 UL94-Vo  
Application: Plug-in Connectors


**POL-P**

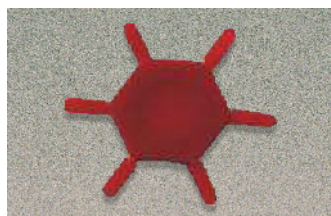
Cat. #	Length (mm)	Std. Pk.
POL-P	7.90	30/5

**Used for parts:**

PVXX-5.00, 5.08, 7.50  
PHXX-5.00, 5.08, 7.50  
PVPXX-5.00, 5.08, 7.50  
PHPXX-5.00, 5.08, 7.50  
PDSHXX-5.00, 5.08  
PDSVXX-5.00, 5.08  
PDVXX-5.00, 5.08  
PDHXX-5.00, 5.08  
PIXX-5.00, 5.08  
PIPXX-5.00, 5.08  
SFXX-5.00, 5.08



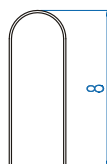
Coding Spline  
Working Temp: 125°C  
Color: Red  
Body: PA66/6 UL94-Vo  
Application: Plug-in Connectors


**POL-S**

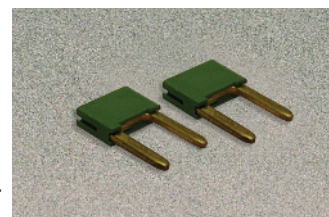
Cat. #	Length (mm)	Std. Pk.
POL-S	7.90	30/5

**Used for parts:**

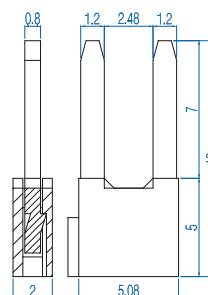
SHXX-5.00, 5.08, 7.50  
PVPXX-3.50, 3.81  
PHPXX-3.50, 3.81  
SVFXX-5.08  
SVP-5.08



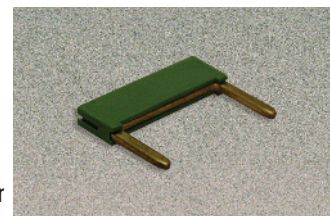
Jumpers, Adjacent  
Working Temp: 125°C  
Color: Green  
Body: PA66/6 UL94-Vo  
Application: Jumper Connection  
Design: 5.08 Spacing Modular


**PT5**

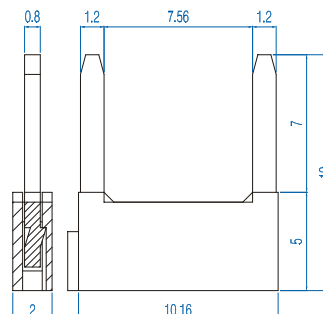
Cat. #	Length (B) (mm)	Std. Pk.
PT5	10.16	100



Jumpers, Alternate  
Working Temp: 125°C  
Color: Green  
Body: PA66/6 UL94-Vo  
Application: Jumper Connection  
Design: 10.16 Spacing Modular


**PT10**

Cat. #	Length (B) (mm)	Std. Pk.
PT10	10.16	100



# Mouser Electronics

Authorized Distributor

Click to View Pricing, Inventory, Delivery & Lifecycle Information:

[Altech:](#)

[PT5](#) [PT10](#) [POL-S](#) [POL-P](#)