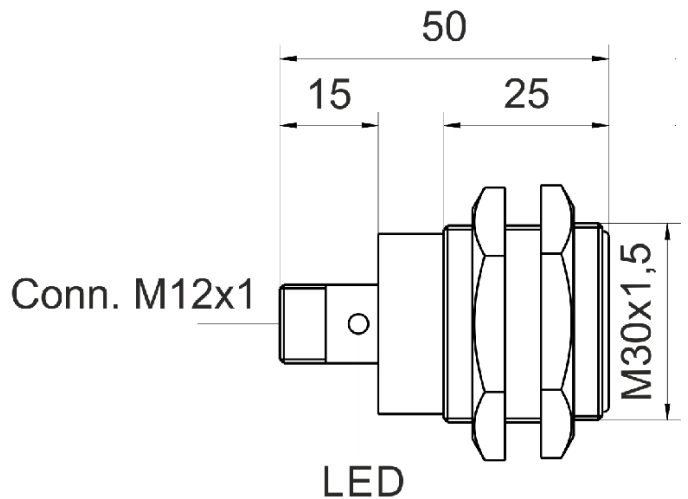
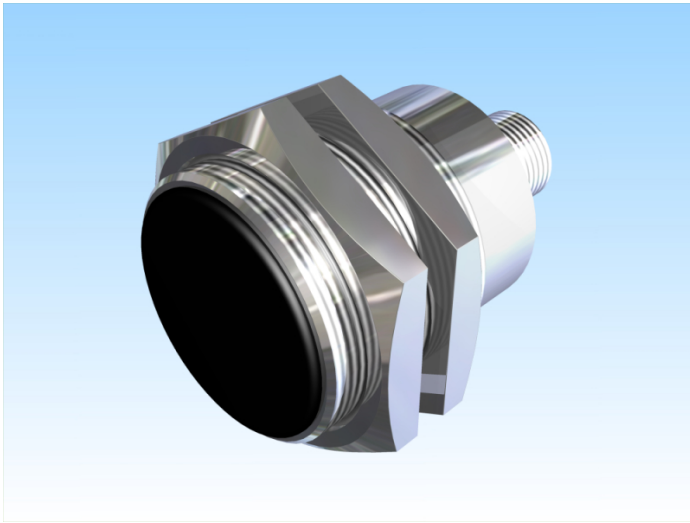


[Article Page](#)

Product Description



inductive sensor DC

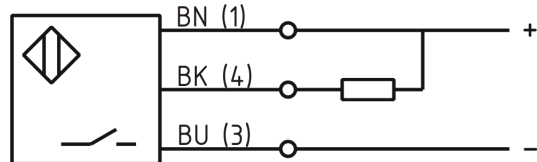


Name
 Order number
 Matchcode
 Switching distance
 Mounting

 Switch type

 Signal Type
 Connection
 Connection diagramm

KJ10-M30MB50-DNS-V2
 08317862165
 9986-2165
 10 mm
 shielded
 N.O.
 DC NPN
 connector M12



fine-pitch thread M30 x 50

Dimension (in mm)
 Technical Specification
 Operating voltage
 Max. ripple
 Voltage drop
 Max. load current
 No load current
 Leakage current
 Switching frequency
 Switching hysteresis
 Operating temperature
 Temperature drift
 Repeat accuracy
 Switching state
 Short-circuit proof
 Overload protection
 Reverse voltage protection
 Protection category
 EMC-level
 Housing material
 Material active face
 Utilisation category

10 - 30 V DC
 ≤ 10 %
 2,4 V
 200 mA
 ≤ 10 mA
 ≤ 10 µA
 500 Hz
 ≤ 15 %
 -25 ° C to 70 ° C
 ≤ 10 %
 ≤ 10 %
 LED
 yes
 yes
 yes
 IP67
 DIN EN 60947-5-2: 2008
 Brass, nickel plated
 PA 6.6 sw
 DC 13



KJ10-M30MB50-DNS-V2

Pulsotronic GmbH & Co. KG Neue Schichtstraße 14b 09366 Niederdorf Deutschland +49 (0)37296 930-200

Termination

Connector M12 4pin

Errors and omissions exceptet

Mouser Electronics

Authorized Distributor

Click to View Pricing, Inventory, Delivery & Lifecycle Information:

[Altech:](#)

[08317862165](#)