



Test Jacks 4 mm System

Type

KD 10

4mm Insulated Adapter, nickel plated brass, for two 4mm plugs

KUN 10

4mm Insulated Adapter, tin plated brass jack and screw terminal max 1.5mm²

Pin Diameter

4 mm

4 mm

PART NO. / Housing color

● 930109100
● 930109101

● 930189100
● 930189101

Technical Data

Contact Type	jack Ø 4 mm
Connection Type	jack (Ø 4 mm)
Voltage Rating	30 VAC / 60 VDC
Measurement Category (IEC61010)	CAT I
Current Rating*	10 A
Contact Resistance	5 mOhm
Mounting Type	–

Material Specifications

Jack Body	nickel plated brass
Contact Spring	–
Housing	PS

Environmental Conditions

Temperature Range	-25°C to +70 °C (-13 to 158°F)
-------------------	--------------------------------

Flamability Rating

Housing	UL 94 HB
---------	----------

jack Ø 4 mm
screw terminal max. 1.5mm ²
30 VAC / 60 VDC
CAT I
16 A
3 mOhm
–

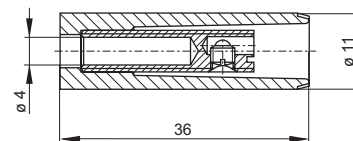
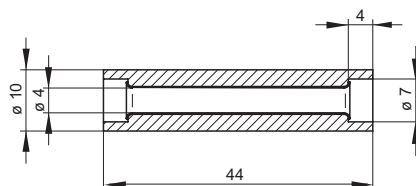
tin plated brass
–
PS

-25°C to +70 °C (-13 to 158°F)

UL 94 HB

Drawing

Measurements are shown in millimeters.
Multiply by 0.03937 to convert to inches.



* Please consider derating graph on page 80.

Mouser Electronics

Authorized Distributor

Click to View Pricing, Inventory, Delivery & Lifecycle Information:

Altech:

[930109101](#) [930109100](#)