

# Clamp-type Test Probe 2 mm system



## Type



### KLEPS 1600

Safety clamp-type test probe with rotating grip jaws and flexible shaft. Wires and pins with up to a maximum diameter of 4 mm can be clamped thanks to the special form of the grip jaws. 4 mm diameter brass socket connection.

Clamping range  
Clamp type

3 mm  
rotating grip jaws

**PART NO. /** Housing color

**975106100** ●  
**975106101** ●

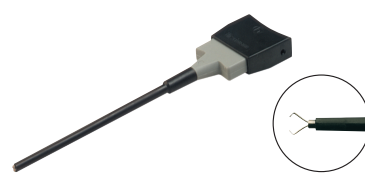


### KLEPS 30

Clamp-type test probe with rotating grip jaws and flexible shaft. The special form of the grip jaws allows clamping of pins and wires up to a maximum of 4 mm diameter. 4 mm diameter brass socket connection with side screw, grip jaws additionally nickel-plated.

4 mm  
rotating grip jaws

**930113100** ●  
**930113101** ●



### KLEPS 60

Clamp-type test probe grip jaws and flexible shaft. The special form of the grip jaws permits clamping of pins and wires up to a maximum of 4 mm diameter. 4 mm diameter brass socket connection with additional screw connection, grip jaws additionally nickel-plated.

4 mm  
rotating grip jaws

**973053100** ●  
**973053101** ●

## Technical data

Type of termination socket Ø2 mm  
Rated voltage AC/DC 1000V  
Measurment cat. acc. to IEC61010 CAT III  
Rated current\* 3 A  
Contact resistance 50 mOhm  
Certificate CE

## Material Specifications

Contact material grip jaw: spring steel, socket: brass  
Contact surface material grip jaws: nickel, socket: gold  
Housing material PA

## Environmental conditions

Temperature range -25 °C to +70 °C

## Inflamability class

Housing (basic material) UL 94 V-2

socket Ø 4 mm, screw  
30 VAC / 60 VDC  
CAT I  
4 A  
50 mOhm

grip jaw: spring steel, socket: brass  
grip jaws: nickel  
PF

-25 °C to +80 °C

UL 94 V-0

socket Ø 4 mm, screw  
30 VAC / 60 VDC  
CAT I  
4 A  
50 mOhm

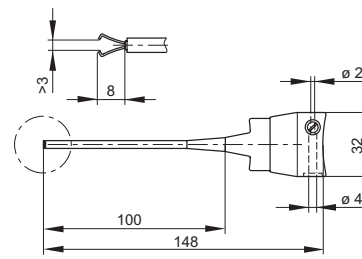
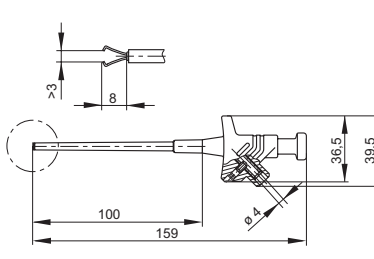
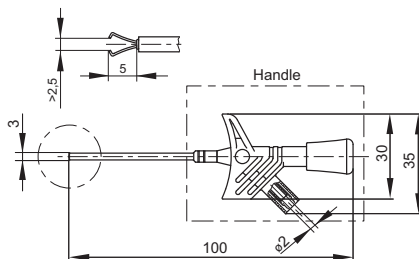
grip jaw: spring steel, socket: brass  
grip jaws: nickel  
PP, PS

-25 °C to +60 °C

UL 94 HB

## Drawing

Measurements are shown in millimeters.  
Multiply by 0.03937 to convert to inches.



# Mouser Electronics

Authorized Distributor

Click to View Pricing, Inventory, Delivery & Lifecycle Information:

[Altech:](#)

[930113101](#) [930113100](#) [975106100](#) [975106101](#) [973053101](#) [973053100](#)