

Type

# Clamp-type Test Probes 0.64 mm system



## MICRO-KLEPS

Miniature clamp-type test probe with rotating grip jaws (SMD technology). The insulated shaft can be bent up to 35°. Suitable for very thin wires and densely packed contact points (1.27 mm IC spacing pitch). Connects with MKL... and MAL...

Clamping range  
Clamp type

2 mm  
rotating grip jaws

PART NO. / Housing color

973972100 ●  
973972101 ●



## KLEPS 3 ST

Miniature clamp-type test probe with rotating grip jaws. Suitable for very thin wires and densely packed contacts. Connects with MKL... and MAL...

3.5 mm  
rotating grip jaws

973592100 ●  
973592101 ●

### Technical data

Type of termination  
Rated voltage  
Measurment cat. acc. to IEC61010  
Rated current\*  
Contact resistance

2x pin Ø 0.64 mm  
30 VAC / 60 VDC  
CAT I  
2 A  
10 mOhm

### Material Specifications

Contact material

grip jaws: spring steel,  
pin: brass

Contact surface material  
Housing material

grip jaws: tin, pin: nickel  
PBT

### Environmental conditions

Temperature range

-25 °C to +100 °C

### Inflamability class

Housing (basic material)

UL 94 HB

pin Ø 0.64 mm  
30 VAC / 60 VDC  
CAT I  
2 A  
10 mOhm

grip jaws: spring steel,  
pin: brass

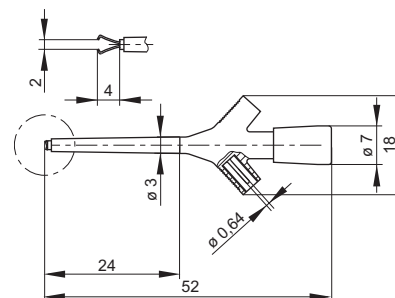
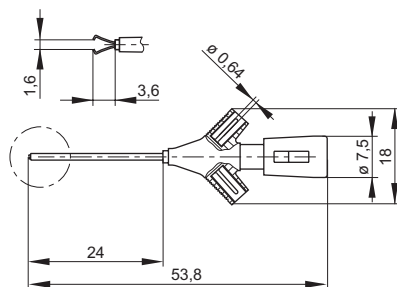
grip jaws: tin, pin: nickel  
PBT

-25 °C to +100 °C

UL 94 HB

### Drawing

Measurements are shown in millimeters.  
Multiply by 0.03937 to convert to inches.



# Mouser Electronics

Authorized Distributor

Click to View Pricing, Inventory, Delivery & Lifecycle Information:

[Altech:](#)

[973972100](#) [973972101](#) [973592100](#) [973592101](#)