

Test Jacks 4 mm System



Type

KUN 30 / KUN 30 Au

4mm Adapter, nickel/ gold plated brass with solder terminal max 2.5mm². Flexible, shatter-proof insulation sleeve

Pin Diameter

4 mm

PART NO. / Housing color

Nickel Plated	Gold Plated
● 931804100	● 931804700
● 931804101	● 931804701
● 931804102	● 931804702
● 931804103	● 931804703
● 931804104	● 931804704
○ 931804107 nickel	○ 931804707 gold



PB 4

4mm test jack, dimensions according to DIN41649. Suitable for testing PCB boards during operation.

4 mm

● 973582100
● 973582101

Technical Data

Contact Type	jack Ø 4 mm
Connection Type	solder terminal (max. 2.5mm ²)
Voltage Rating	30 VAC / 60 VDC
Measurement Category (IEC61010)	CAT I
Current Rating*	16 A
Contact Resistance	3 mOhm
Mounting Type	-

Material Specifications

Jack Body	nickel plated brass gold plated brass
Contact Spring	-
Housing	PVC-P

Environmental Conditions

Temperature Range	-25°C to +70 °C (-13 to 158°F)
-------------------	--------------------------------

Flamability Rating

Housing	-
---------	---

jack Ø 4 mm

Connection Type	solder
Voltage Rating	30 VAC / 60 VDC
Measurement Category (IEC61010)	CAT I
Current Rating*	16 A
Contact Resistance	5 mOhm
Mounting Type	PCB

tin plated brass

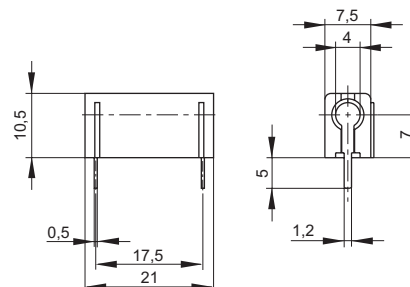
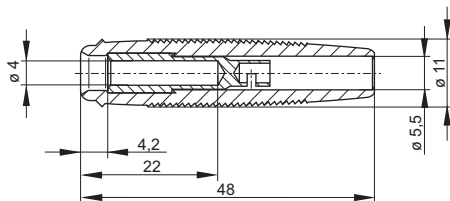
Contact Spring	-
Housing	PC

-25°C to +70 °C (-13 to 158°F)

UL 94 HB

Drawing

Measurements are shown in millimeters.
Multiply by 0.03937 to convert to inches.



* Please consider derating graph on page 80.

Mouser Electronics

Authorized Distributor

Click to View Pricing, Inventory, Delivery & Lifecycle Information:

[Altech:](#)

[973582100](#) [973582101](#) [931804100](#) [931804101](#) [931804102](#) [931804103](#) [931804104](#) [931804107](#) [931804707](#)
[931804701](#) [931804704](#) [931804700](#) [931804702](#) [931804703](#)