

Test Probes 4 mm Safety System



CE



CE

Type

PRUEF 2600 C2

Test probe shatter - proof insulating sleeve and slender stainless steel tip. Tip for penetration of insulation and oxide layers. 4mm diameter brass socket connection. Connection with safety measuring leads. Accessory (optional): protector and IC - tap SS 260

Tip diameter 2 mm (0.079 in.)

PART NO. / Housing color
972327100 ●
972327101 ●

SS 260

Tip protection and IC tap. Clipping onto the PRUEF 2, PRUEF 2 S and PRUEF 2600 C2 test probe covers the needle tip and provides protection against injury. Contact is made with ICs without short circuiting or slipping off.

973865001 ○

PRUEF 2610 FT

Test probe with insulated sleeve and slender, sprung stainless steel tip. This allows a constant pressure to be applied without the tip slipping off the component, even in the smallest measuring points. 4 mm diameter brass socket connection.

0.75 mm (0.029 in.)

972318100 ●
972318101 ●

Technical Data

Connection Type stationary tip
Voltage Rating fixed socket Ø 4 mm
Measurement Category (IEC61010) AC/DC 1000V
Current Rating* CAT II
Contact Resistance 1 A

Material Specifications
Tip stainless steel
Connection pin/ socket nickel plated brass
Contact Spring -
Housing PP

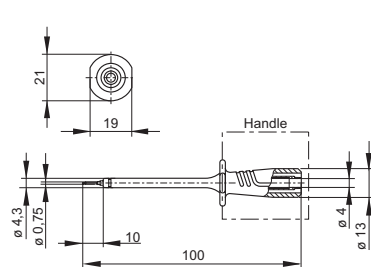
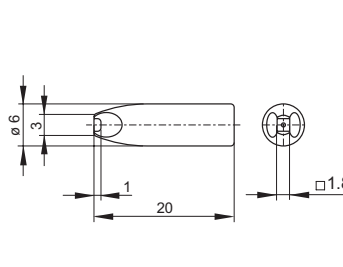
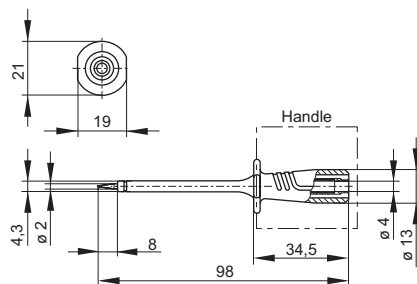
Environmental Conditions
Temperature range -20°C to +60°C (-4°F to 140°F)
Flamability Rating
Housing UL 94 HB

-
-
-
-
-
-
-
-
-
-
-

spring-loaded tip
fixed socket Ø 4 mm
AC/DC 1000 V
CAT II
1 A
50 mOhm
stainless steel
nickel plated brass
PP
-25 °C to +80 °C (13°F to 176°F)
UL 94 HB

Drawing

Measurements are shown in millimeters.
Multiply by 0.03937 to convert to inches.



* Please consider derating graph on page 80.

Mouser Electronics

Authorized Distributor

Click to View Pricing, Inventory, Delivery & Lifecycle Information:

[Altech:](#)

[972318101](#) [972327100](#) [972327101](#) [972318100](#) [973865001](#)