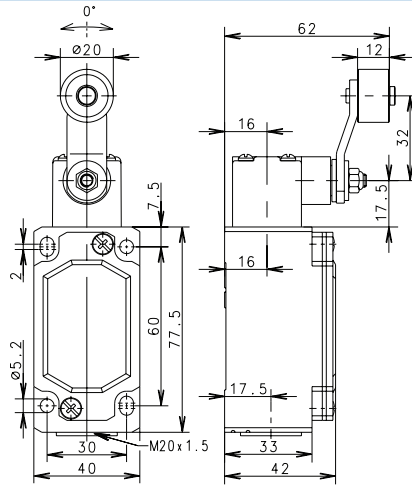


## ENM2 - Safety Limit Switch



### AHZ

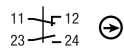


#### Switching Operation

1 NC/1 NO Contacts

#### Slow Action

608.7135.030  
ENM2-U1Z AHZ



#### Snap Action

-

2 NC Contacts

-

-

2 NO Contacts

-

-

1 NC / 1NO Contacts  
Overlapping

-

-

#### Replacement actuator:

#### Technical Information

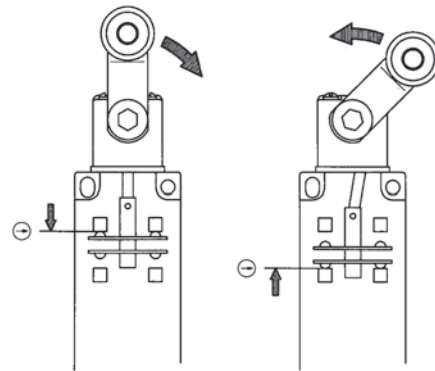
|                                  |                      |  |
|----------------------------------|----------------------|--|
| Maximum Switching Voltage        | 240V                 |  |
| Max. Switching Amps (up to)*     | 10A                  |  |
| B10d (up to)*                    | 20 Million           |  |
| Mechanical Service Life (up to)* | 10 x 10 <sup>6</sup> |  |
| Switching Frequency              | ≤ 100/min            |  |
| Operating Temperature            | -30 °C to +80 °C     |  |
| Protection Rating                | IP65                 |  |
| Utilization Category (up to)*    | AC-15, Ue/Ue 240V 3A |  |
| Rate Insulation Voltage          | 400VAC               |  |

Approvals



#### Special features

- Positively opening action, forward and return activation
- For special safety applications, the positive opening action of the normally-closed contacts takes place both in forward (moving in one direction) as well as in return (moving back to home position) direction
- For personal protection applications movement of the roller must be contained in a guide block in both directions



Note – if substituting actuators  
AH, AHS, AHS-V, AHZ, AF, AD, AV,  
DGH, DGK  
– the positive conditions of the  
activation may change.

After the adjustment, the user must  
make sure that the part reaches the  
necessary safety levels.

# Mouser Electronics

Authorized Distributor

Click to View Pricing, Inventory, Delivery & Lifecycle Information:

[Altech:](#)

[608.7135.030](#)