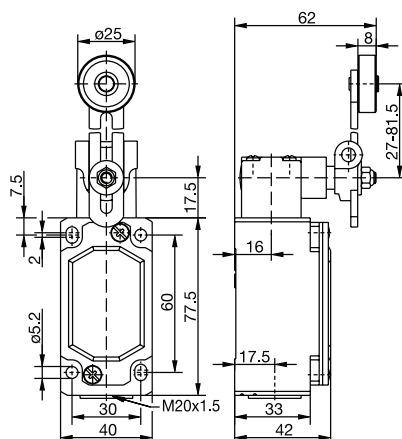


ENM2 Series



AV

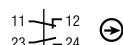


Switching Operation

1 NC / 1 NO Contacts

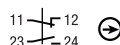
Slow Action

608.7136.016
ENM2-U1 AV



Snap Action

608.7386.017
ENM2-SU1 AV



2 NC Contacts

-

-

2 NO Contacts

618.7836.060
ENM2-E2 AV

-

-



**1 NC / 1 NO Contacts
Overlapping**

-

-

Replacement actuator:

391.8360.730

Technical Information

Slow Action

Snap Action

Maximum Switching Voltage	240V	240V
Max. Switching Amps (up to)*	10A	10A
B10d (up to)*	20 Million	20 Million
Mechanical Service Life (up to)*	3 x 10 ⁶	10 x 10 ⁶
Switching Frequency	≤ 100/min	≤ 100/min
Operating Temperature	-30 °C to +80 °C	-30 °C to +80 °C
Protection Rating	IP65	IP65
Utilization Category (up to)*	AC-15, Ue/Ue 240V 3A	AC-15, Ue/Ue 240V 3A
Rate Insulation Voltage	400VAC	400VAC

Approvals

* Depending on switching system - see technical information for details



Special features/variants (on request)

- Available with various actuator lengths and actuator directions
- Various roller diameters

Drawing dimensions in mm

Mouser Electronics

Authorized Distributor

Click to View Pricing, Inventory, Delivery & Lifecycle Information:

[Altech:](#)

[608.7386.017](#) [608.7136.016](#) [618.7836.060](#)