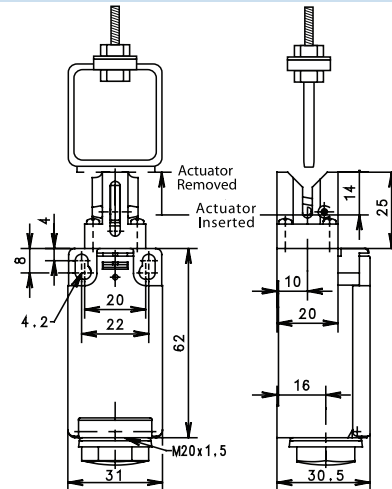


## I88 Series



### KS

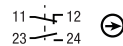


#### Switching Operation

1 NC / 1 NO Contacts

#### Slow Action

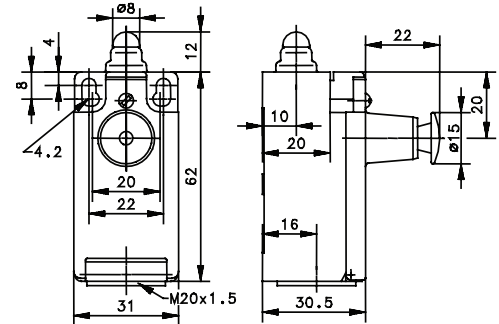
611.6819.140  
I88-U1Z KS



#### Snap Action

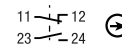
-  
-

### W RAST



#### Slow Action

618.6103.005  
I88-U1Z W RAST



#### Snap Action

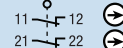
-  
-

2 NC Contacts

-  
-

-  
-

618.6803.155  
I88-A2Z W RAST



-  
-

2 NO Contacts

-  
-

-  
-

-  
-

-  
-

1 NC / 1 NO Contacts  
Overlapping

-  
-

-  
-

-  
-

-  
-

#### Replacement actuator:

391.8401.031

#### Technical Information

	Slow Action	Snap Action	Slow Action	Snap Action
Maximum Switching Voltage	240V	240V	240V	240V
Max. Switching Amps (up to)*	10A	10A	10A	10A
B10d (up to)*	20 Million	20 Million	20 Million	20 Million
Mechanical Service Life (up to)*	3 x 10 <sup>6</sup>	10 x 10 <sup>6</sup>	10 x 10 <sup>6</sup>	10 x 10 <sup>6</sup>
Switching Frequency	≤ 100/min	≤ 100/min	≤ 100/min	≤ 100/min
Operating Temperature	-30 °C to +80 °C	-30 °C to +80 °C	-30 °C to +80 °C	-30 °C to +80 °C
Protection Rating	IP65	IP65	IP65	IP65
Utilization Category (up to)*	AC-15, Ue/Ue 240V 3A	AC-15, Ue/Ue 240V 3A	AC-15, Ue/Ue 240V 3A	AC-15, Ue/Ue 240V 3A
Rate Insulation Voltage	250VAC	250VAC	250VAC	250VAC

Approvals

\* Depending on switching system - see technical information for details



# Mouser Electronics

Authorized Distributor

Click to View Pricing, Inventory, Delivery & Lifecycle Information:

[Altech:](#)

[618.6103.005](#) [618.6803.155](#) [611.6819.140](#)