

# Technical Data

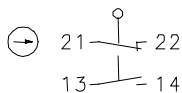
## Safety switch

### Series SLK – with separate actuator

Description **SLK-MVTU24UC-55-FX**

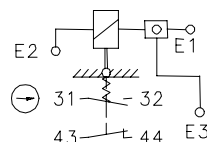
Article number **6118119095**

Position monitoring  
of guard locking

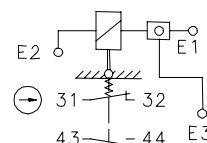


Termination electromagnet  
with contact position

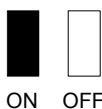
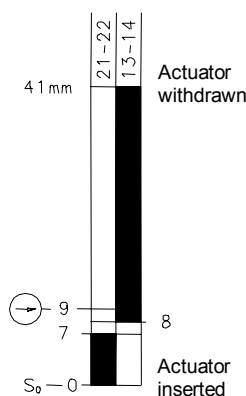
E1/E3, E2 without current



E1/E3, E2 with current

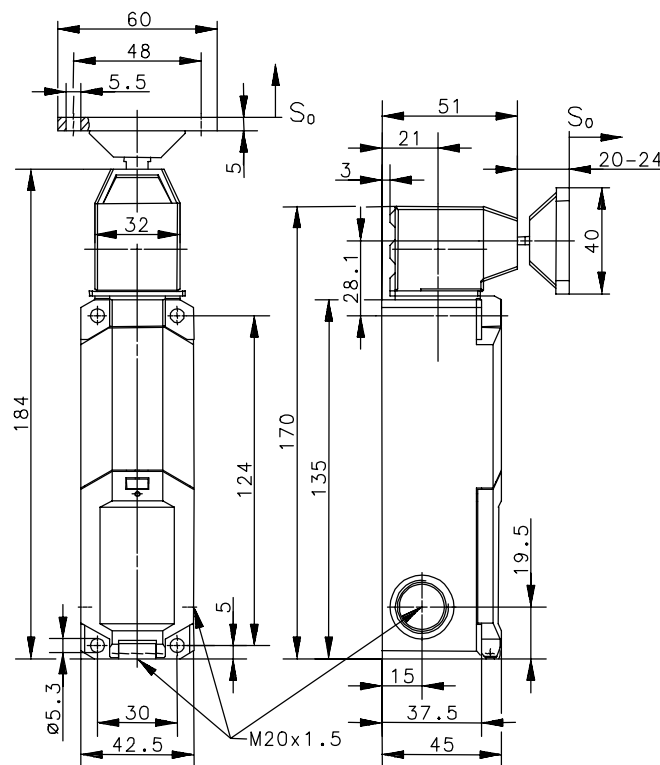


Operating diagram



Tolerances

Actuating force:  $\pm 15\%$



### Electrical data

Protection class

II, totally insulated

### Contact elements

Rated insulation voltage

$U_i$  250V

Conv. thermal current

$I_{the}$  2,5A

Utilization category

AC-15,  $U_e/I_e$  230V/2,5A

Direct opening action



according to IEC/EN 60947-5-1, Annex K

Short-circuit protective device

4A gL

### Electro magnets

Duty cycle

100% ED (at E1/E3; E2)

Temperature class

B (130°C)

Inrush power consumption

56VA (0,2s)

Permanent power consumption

1,1VA

Switch operations permanent

600/h

Operating voltage

24V AC/DC

This document will not become the contractual basis; the details included herein do not constitute any descriptions of expected conditions, so that warranties/claims for defects on account of possible variations of the actual qualities from the qualities described herein are explicitly excluded. All rights reserved. Specifications subject to change without notice!

Date of issue: 31.05.2005 / Page 1 of 2  
Document : 6118119095\_en / Last update: 1 / 2236-05

Mechanical data			
Enclosure	Thermoplastic GV (UL94-V0)		
Cover	Thermoplastic GV (UL94-V0)		
Actuating head	Thermoplastic GV / Zn-GD		
Actuator	Separate actuator (St / PA)		
	Minimum actuating radius	$R_{min}$	350mm
	Velocity for actuating	$V_{max}$	0,5 <sup>m</sup> / <sub>s</sub>
	Extraction force		≥ 27N
Interlocking principle	Magnetic force		
Unlocking	Spring force		
Hold on force	≤ 1500N acc. to GS-ET-19		
	$F_{Zh}$		
Ambient air temperature	-25°C ... +70°C		
Contact type	2 NC, 2 NO		
Switching principle	4 slow make and break contact elements		
Mechanical life	1 x 10 <sup>6</sup> switching cycles (at max. 600 switch operations / h)		
Assembly	4 x M5		
Connection	Cage tension spring		
Conductor cross-sections	≤ 1,5mm <sup>2</sup> flexible		
Cable entrance	3 x M20x1,5		
Weight	≈ 0,30kg		
Installation position	Operator definable		
Protection type	IP67 acc. to IEC/EN 60529		

### Actuation

4 different actuating directions achievable by rotating the actuating head.  
Changing between horizontal and vertical actuating direction by setting the actuating head in the requested direction.

### Standards

VDE 0660 T100, DIN EN 60947-1, IEC 60947-1  
VDE 0660 T200, DIN EN 60947-5-1, IEC 60947-5-1  
GS-ET-19

### EU Conformity



### Approvals

cCSA<sub>US</sub> B300 (same polarity)

### Notes

The degree of protection (IP code) specified applies solely to a property closed cover and the use of an equivalent cable gland with adequate cable.  
The switch may not be used as a mechanical stop.  
In case that power is removed from the solenoid the safety switch will be no longer in a locked position. Operator can open the guard! Attention has to be given to the risks of the machine in this situation.

# Mouser Electronics

Authorized Distributor

Click to View Pricing, Inventory, Delivery & Lifecycle Information:

[Altech:](#)

[611.8119.095](#)