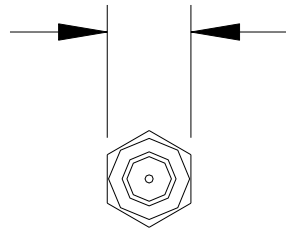
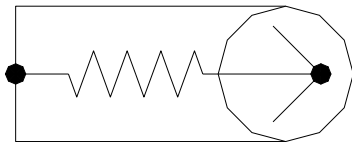
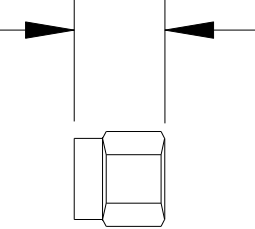


5/16" Hex
(7,93mm)



.34"
(8,64mm)



SCHEMATIC

MATERIALS:

Housing: Stainless Steel

Center Contact: Gold Plated Beryllium Copper.

Dielectric: PTFE

RATINGS:

Operating Voltage: Hands free usage in controlled voltage environments: 335 Vrms maximum. *For CE compliance: not intended for hand-held use at voltages above 33 Vrms/70 Vdc.*

Operating Temperature: -85°F to +257°F (-65°C to +125°C)

Nominal Impedance: 50 Ohms

Frequency Range: DC to 18.0 GHz

VSWR:

DC – 4 GHz :1.05:1 Max.

4 – 8 GHz :1.10:1 Max.

8 – 12 GHz :1.15:1 Max.

12 – 18 GHz :1.25:1 Max.

Center Contact Resistance: <.003 Ohms

Insulation Resistance: >5,000 MOhm

Power: 1 Watt @ 25°C, derated linearly to .1W @ +125°C

ORDERING INFORMATION: Model 4286

All dimensions are in inches. Tolerances (except noted): .xx = ±.02" (.51 mm), .xxx = ±.005" (.127 mm).

All specifications are to the latest revisions. Specifications are subject to change without notice.

Registered trademarks are the property of their respective companies.

Sales: 800-490-2361 Fax: 888-403-3360 Technical Support: 800-241-2060 (technicalsupport@pomonatest.com)

For "Where to Buy" information, visit the Pomona web site at www.pomonaelectronics.com

Mouser Electronics

Authorized Distributor

Click to View Pricing, Inventory, Delivery & Lifecycle Information:

[Pomona:](#)

[4286](#)