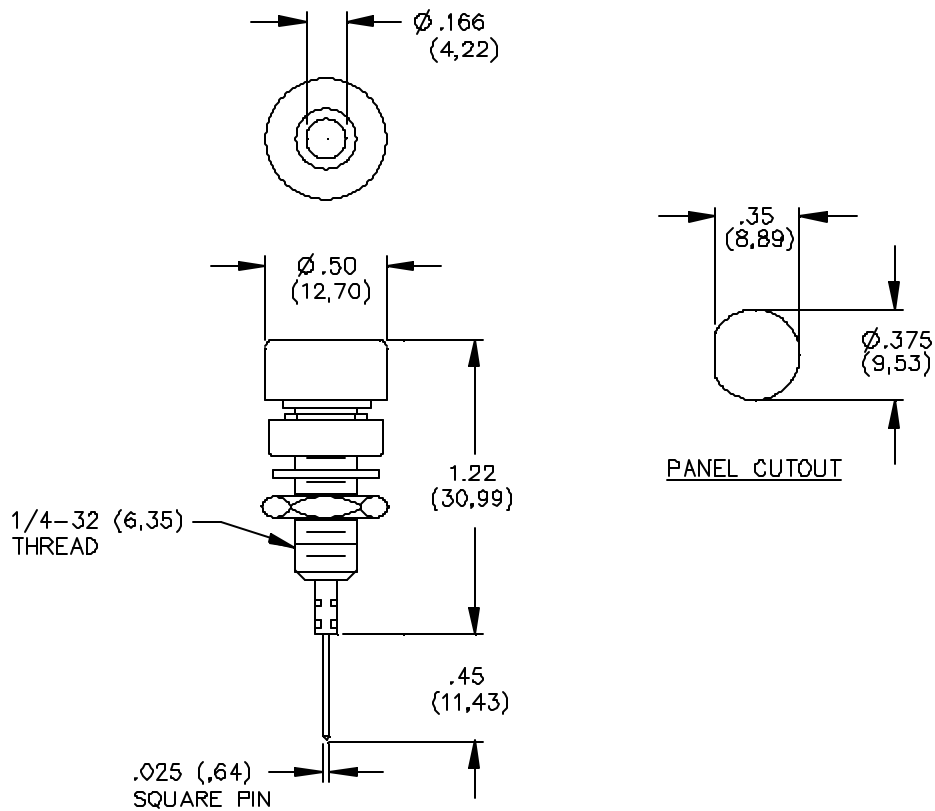


Model 4005 Insulated Banana Jack With Wire Wrapped Terminal



FEATURES:

- Mounts in panels from 1.60 (.063) to 9.53 (.375) thick.

MATERIALS:

Banana Jack: Nickel Plated Brass
Terminal: Gold Plated Phosphor Bronze
Insulation: Polycarbonate
Mounting Base: Polycarbonate
Lockwasher: Steel
Hex Nut: Brass

RATINGS:

Voltage: Hand-held testing: 30VAC/60VDC Max.
Hands free testing in controlled voltage environments: 2500 WVDC Max.
Operating Temperature: +115°C (+239°F) Max.
Current: 3 Amperes

ORDERING INFORMATION: Model 4005-*

*=Color, -0 Black, -1 Brown, -2 Red, -3 Orange, -4 Yellow, -5 Green, -6 Blue, -7 Violet, -8 Gray, -9 White

Ordering Example: 4005-2 Color is Red
Sold in packages of 10

All dimensions are in inches. Tolerances (except noted): .xx = ±.02" (.51 mm), .xxx = ±.005" (.127 mm).
All specifications are to the latest revisions. Specifications are subject to change without notice.
Registered trademarks are the property of their respective companies. Made in USA

Mouser Electronics

Authorized Distributor

Click to View Pricing, Inventory, Delivery & Lifecycle Information:

Pomona:

[4005-0](#) [4005-2](#) [4005-0#](#)