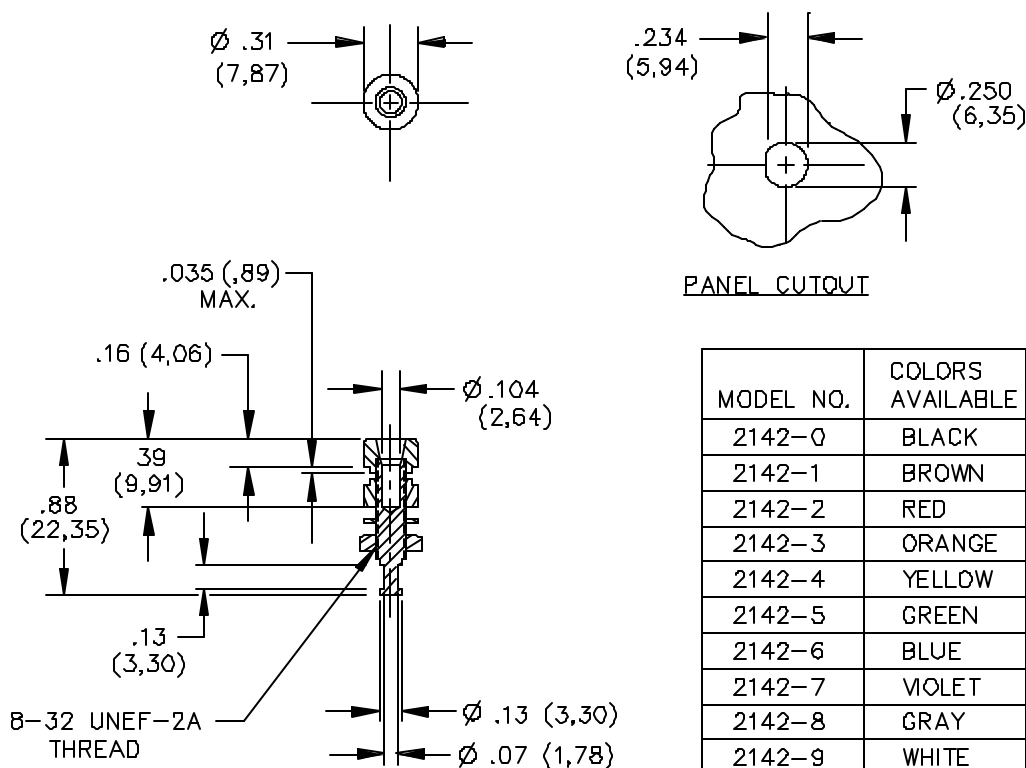


Model 2142 Insulated Miniature Banana Jack



FEATURES:

- Accepts miniature banana plugs.
- Mounts in panels up to .250" thick.

MATERIAL:

Banana Jack Insulation – Polycarbonate. Color: Black

Panel Insulator – Polycarbonate. Color: Black

Lockwasher, #8 Internal Tooth – Steel

Hex Nut, #8-32 – Brass

Banana Jack Body - Brass

Finish:

Lockwasher #8 – Nickel plated

Hex Nut - Nickel plated.

Banana Jack Body - Gold plated.

RATINGS:

Operating Temperature: +115°C. (+239°F.) Max.

Current: 5 Amperes.

ORDERING INFORMATION: Model 2142-*

*=Color Code – See Tabulation Block

Sold in packages of 10.

All dimensions are in inches. Tolerances (except noted): .xx = ±.02" (.51 mm), .xxx = ±.005" (.127 mm).

All specifications are to the latest revisions. Specifications are subject to change without notice.

Registered trademarks are the property of their respective companies. Made in USA

Mouser Electronics

Authorized Distributor

Click to View Pricing, Inventory, Delivery & Lifecycle Information:

Pomona:

[2142-7](#) [2142-8](#) [2142-1](#)