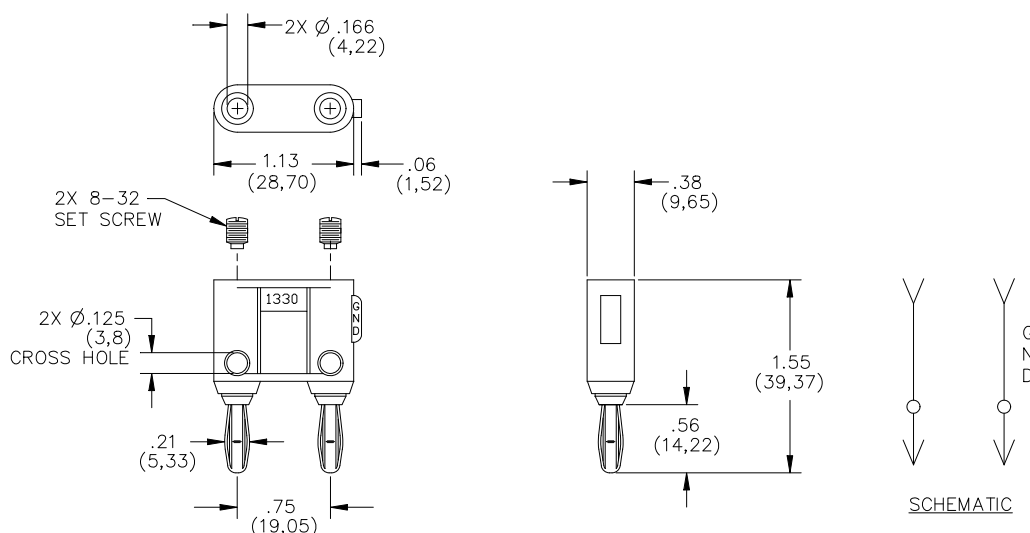


Model 1330
Double Banana Plug with Component Mounting Area

Model 1330
Double Banana Plug with
Component Mounting Area



Features

- Features a recessed area for mounting small discrete components with set screws.
- For test versatility, banana plugs can be vertically and horizontally stacked to the adapter.
- The banana plug features nickel plated beryllium copper for tarnish resistance & long insertion life.

Materials

Banana Plugs/Jacks:

Body: Brass, Nickel Plated
Spring: Beryllium Copper, Nickel Plated

Insulation:

Material: Polypropylene molded to Banana Jack and Banana Plug bodies.

Marking: "1330, POMONA ELECTRONICS CO., INC, POMONA CALIFORNIA"

Set Screws: #8-32 Single Slot, Steel, Zinc Plated

Specifications

Operating Voltage:

Hands free usage in controlled voltage environments: 5000 Vrms maximum.

For CE compliance: not intended for hand-held use at voltages above 33 Vrms/70 Vdc.

Operating Temperature: +50°C (+122°F) Max.

Current: 15 Amperes

Ordering Information

Model: 1330-*

*=Color, Standard Colors: -0 (Black), -2 (Red)

Ordering Example: 1330-2 (Color is Red)

USA: Sales: 800-490-2361
Technical Support: technicalsupport@pomonatest.com
Fax: 425-446-5844

Europe: 31-(0) 40 2675 150 International: 425-446-5500

Where to Buy: www.pomonaelectronics.com

All dimensions are in inches. Tolerances (except noted): .xx = ±.02" (.51 mm), .xxx = ±.005" (.127 mm). All specifications are to the latest revisions. Specifications are subject to change without notice. Registered trademarks are the property of their respective companies.

Mouser Electronics

Authorized Distributor

Click to View Pricing, Inventory, Delivery & Lifecycle Information:

Pomona:

[1330-0](#) [1330-2](#) [1330-0#](#)