

# PK-110 Electrical Test Kit

## Three Electrical Testers to Perform Quick and Safe Voltage Tests

Amprobe's PK-110 Electrical Test Kit offers three electrical testers with testing functions suitable for a variety of residential applications. The kit includes the AM-420 Digital Multimeter, ST-102B Socket Tester with GFCI and VP-1000 Non-Contact Voltage Detector. From identifying voltage presence in outlets and switches to confirming proper wiring of regular and GFCI protected outlets, the PK-110 kit boasts all the features needed to perform quick and safe electrical tests.

**AM-420**

Troubleshoot light bulbs, fuses and detect voltage

**VP-1000**

Quickly verify voltage presence

**ST-102B**

Test receptacles and GFCI breakers

## PK-110 Features

### AM-420 Digital Multimeter

- AC/DC Voltage
- DC Current
- Resistance
- Audible Continuity and Diode Test
- Battery Test (1.5V and 9V)
- Data Hold
- Safety Rated: CAT II 250 V



### VP-1000 Non-Contact Voltage Detector

- AC Voltage Detection
- Visual Voltage Presence Alert
- Safety Rated: CAT IV 1000 V

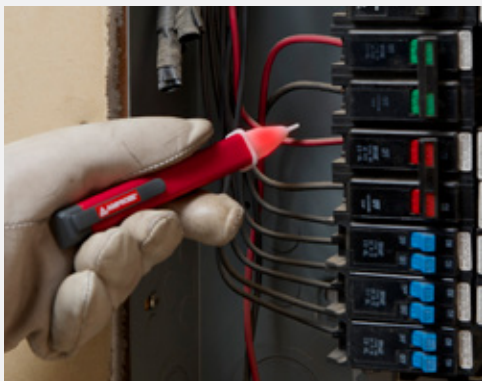


### ST-102B Socket Tester with GFCI

- Tests Standard and GFCI Outlets
- Verifies Proper Wiring
- Detects Five Different Wiring Faults
- CSA Listed for Safety



## PK-110 Applications

**AM-420** Digital Multimeter**VP-1000** Non-Contact Voltage Detector**ST-102B** Socket Tester with GFCI

### **AM-420** Digital Multimeter

**Accurately measure** voltage up to 250V in receptacles, switches, extension cords and light fixtures

**Troubleshoot** light bulbs and fuses with the continuity function

**Check** 1.5V and 9V batteries

**Test extension cords** and verify proper wiring of an outlet with voltage function

**CAT II 250 V safety rating**

### **VP-1000** Non-Contact Voltage Detector

**Easily and safely detect voltage presence** between 90 and 1000 V. Quickly verify voltage presence in outlets, switches, extension cords, circuit breakers and fuses without disconnecting the electrical system.

**Bright LED alerts when voltage is present**

**Operates as 'always on'** using low power circuitry with no buttons for increased safety

**Double insulated, CAT IV 1000V safety rating**

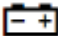
### **ST-102B** Socket Tester with GFCI

**Test receptacle wiring** and confirm GFCI sockets are properly wired with push button

**Detect five different wiring faults** open ground, open neutral, open hot, hot/ground reverse, and hot/neutral reverse

**Three illuminated lights** on the tester indicate the type of wiring problem

## PK-110 Detailed Specifications

Feature	AM-420	Best Accuracy
AC Voltage	200.0 / 250 V	+/- (1.5% rdg + 4 LSD) @ 45 Hz to 400 Hz
DC Voltage	200 mV 2.000 / 20.00 / 200.0 / 250 V	+/- (1.2% rdg + 2 LSD) @ 200 mV to 200 V
DC Current	200.0 µA 2.000 / 20.00 / 200.0 mA	+/- (1.2% rdg + 5 LSD) @ 200 µA to 20 mA
Resistance	200.0 Ω 2.000 / 20.00 / 200.0 kΩ 2.000 MΩ	+/- (1.5% rdg + 5 LSD) @ 200 Ω to 200 kΩ
Continuity	Beeps at ≤10 Ω, off at >70 Ω	
Diode Test	Open-circuit voltage is around 1.5V. Normal voltage is around 0.5V to 0.8V for silicon PN junction.	
Battery Test	1.5 V, 9 V	+/- (8.0% rdg + 1 LSD)
Data Hold	•	
<b>General Specifications:</b>		
Maximum Display	1999, updates 2 to 3/sec	
Range	Manual-ranging	
Operating Temperature	32°F ~ 104°F (0°C ~ +40°C)	
Relative Humidity	32°F ~ 86°F (0°C ~ +30°C) ≤75%; 86°F ~ 104°F (+30°C ~ +40°C) ≤50%	
Operating Altitude	≤ 2000 m	
Storage Temperature	14°F ~ 122°F (-10°C ~ +50°C)	
Electromagnetic Compatibility	In an RF field of 1V/m = Specified accuracy ± 5%. RF field > 1V/m is not specified.	
Over-range Indication	" 1 ", "-1" or maximum display reading	
Battery	One 9V alkaline battery (6LF22, 6LR61, MN1604) or equivalent	
Battery Life	Alkaline: 100 hours typical	
Low Battery Indication		
Overvoltage Category	CAT II 250V safety rated	
Safety Compliance	IEC 61010-1, UL 61010-1 2nd Ed. and CAN/CSA C22.2 No. 61010-1-04 Update No.1:2008	
EMC Compliance	IEC 61326-1	
Certification	cCSAus and CE	
Dimensions (L x W x H)	4.5 x 2.6 x 1.6 in (115 x 65 x 40 mm)	
Weight	Approximately 0.61 lb (275 g) with battery installed	

Feature	VP-1000
Operating Voltage Range	90 Vac → 1000 Vac, 50/60 Hz
Sensitivity	Lights at approx. 0.39 in (10 mm) distance from a wire carrying 120 Vac
Operating Temperature	32°F to 104°F (0°C to +40°C), ≤ 80% RH
Storage Condition	14°F to 122°F (-10°C to +50°C), ≤ 95% RH
Operating Altitude	2000 meters
Power Supply	Two 1.5 V AAA batteries
Dimensions (L x W x H)	6.10 x 0.96 x 0.85 in (155 x 24.5 x 21.5 mm)
Weight	Approx. 0.11 lb (50 g) with batteries installed
Safety Compliance	IEC 61010-1, UL 61010-1 2nd Ed. and CAN/CSA C22.2 No. 61010-1-04
EMC Compliance	IEC 61326-1
Certification	cCSAus and CE

Feature	ST-102B
Operating Voltage	110 – 125 Vac, 50 – 60 Hz
Wattage	0.3 W
Actuator	Black button
Indicator	Red LED, three lights, neon
Lamp Lens Colors	One red, two amber
Six Conditions Indicated	Open ground, open neutral, open hot, hot/ground reverse, hot/neutral reverse, correct
Safety Compliance	C22.2 No. 160-M1985 / UL 1436 – 4th Edition
Certification	cCSAus

# Mouser Electronics

Authorized Distributor

Click to View Pricing, Inventory, Delivery & Lifecycle Information:

[AMPROBE:](#)

[PK-110](#)