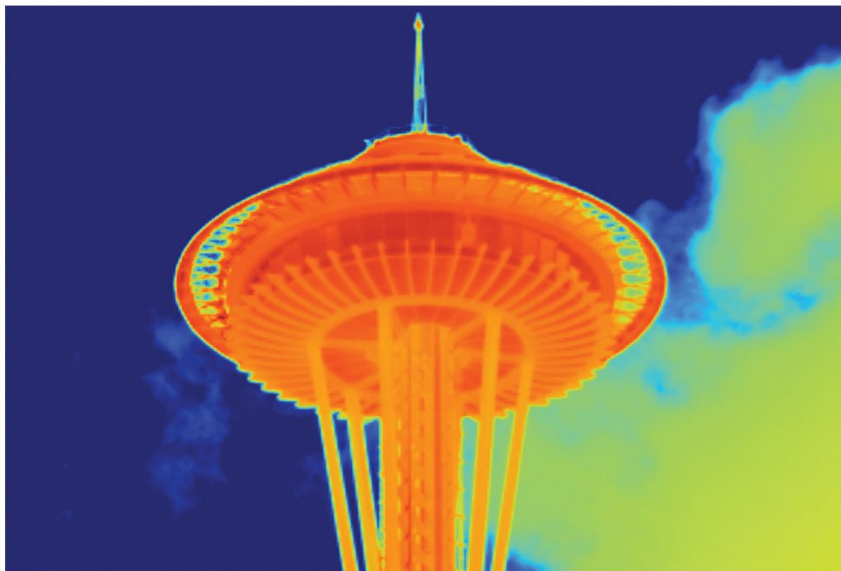


TECHNICAL DATA

2x Telephoto Infrared Smart Lens







Product overview: 2x Telephoto Infrared Smart Lens

View your target magnified 2 times more than a standard lens, and reduce the need to enter the danger zone in your plant or to climb a tall ladder to capture the critical infrared details that could indicate your equipment has an issue.

Avoid the hassle of sending in your camera to calibrate with the lens — with smart lenses you can just attach the lens to any compatible camera and start taking images.

Made of 100% diamond-turned germanium with an engineered coating, the most efficient available material to transmit energy to the detector.

Compatible with TiX580, TiX501, Ti480 PRO, Ti401 PRO.

Specifications: 2x Telephoto Infrared Smart Lens

Description		
IFOV (spatial resolution)	Ti401 PRO / Ti480 PRO	0.33 mRad
	Ti300+	0.66 mRad
	TiX501 / TiX580	0.33 mRad
Field of view	12 ° H x 9 ° V	
Focus distance	45 cm (approximately 18 in)	

Ordering information



FLK-LENS/TELE2

For use with the TiX580, TiX501, Ti480 PRO, and Ti401 PRO Infrared Cameras.



Fluke. *Keeping your world up and running.®*

Fluke Corporation
PO Box 9090, Everett, WA 98206 U.S.A.

For more information call:
In the U.S.A. (800) 443-5853
In Canada (800) 36-FLUKE
From other countries +1 (425) 446-5500
www.fluke.com

©2025 Fluke Corporation.
Specifications subject to change without notice.
02/2025

**Modification of this document is not permitted
without written permission from Fluke
Corporation.**

Mouser Electronics

Authorized Distributor

Click to View Pricing, Inventory, Delivery & Lifecycle Information:

[Fluke:](#)

[FLK 2X LENS](#)