

USB Drivers for Fluke 1760 Power Quality Analyzer

Installing and Using Windows USB Drivers

You must install the USB driver before you can connect the Fluke 1760 Power Quality Analyzer to a PC using USB. Once you install the driver, you can easily connect the Fluke 1760 Power Quality Analyzer to your PC to take full advantage of the software designed to analyze recorded measurement data. Additionally, the driver software assists in the first-time set up of a 1760 Power Quality Recorder.

Note

Make sure to install the driver software before connecting the cable and 1760 Power Quality Analyzer to your computer.

Required Equipment

- Laptop or PC
- 1760 Power Quality Analyzer
- Supported USB 2.0 host to host link cable:
USB2.0 Data Link Cable (PN 2826665)

Installation Instructions

Follow these steps to install the USB driver on your PC:

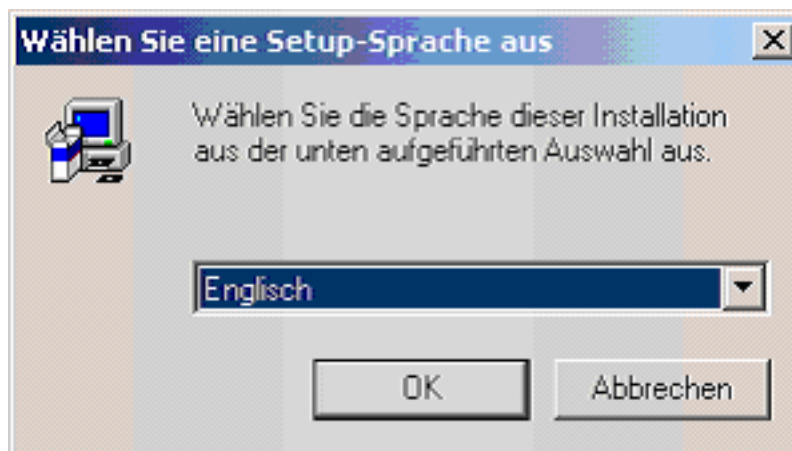
1. Insert Fluke 1760 / PQ Analyze CD into CD ROM drive.

If the program launcher does not start automatically, then run "launch.exe" from the CD.



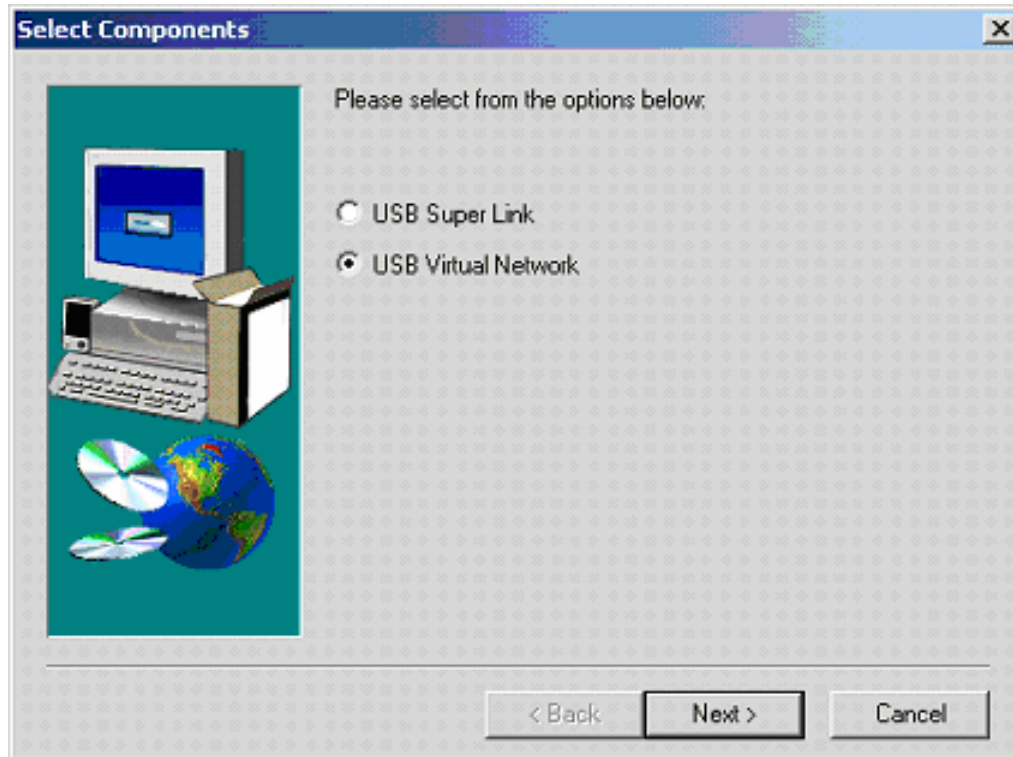
ets001.bmp

2. Select **Install USB Driver Software**.
3. Select your language:



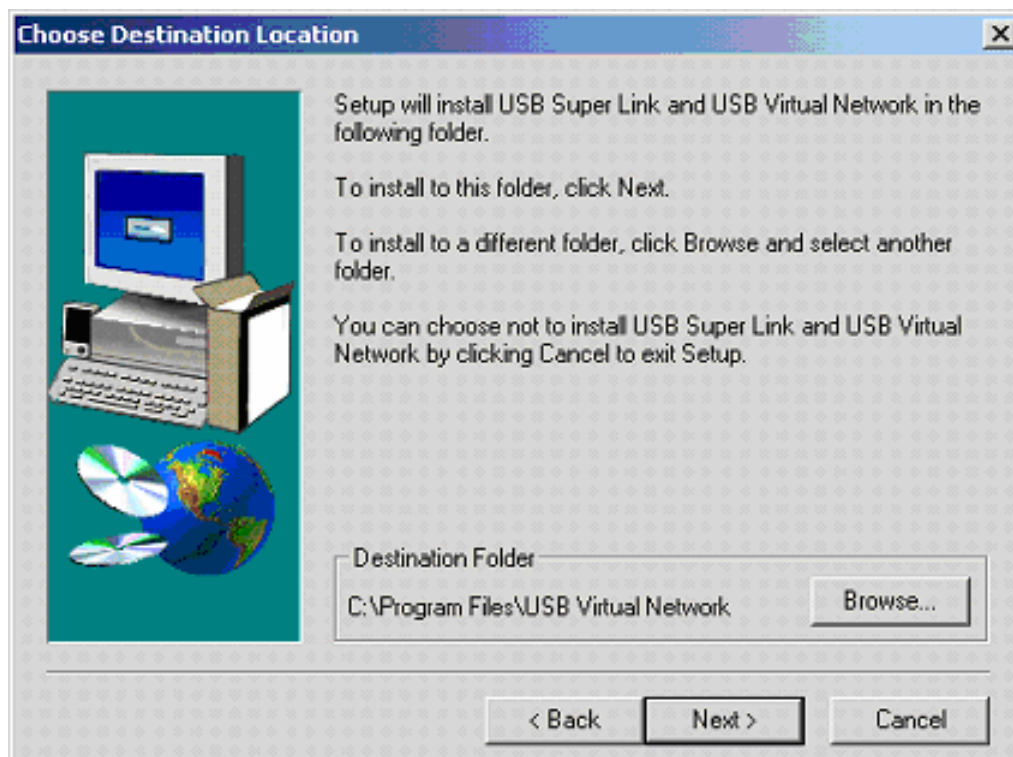
ets002.bmp

4. Click radio button **USB Virtual Network** and press **Next**.



ets003.bmp

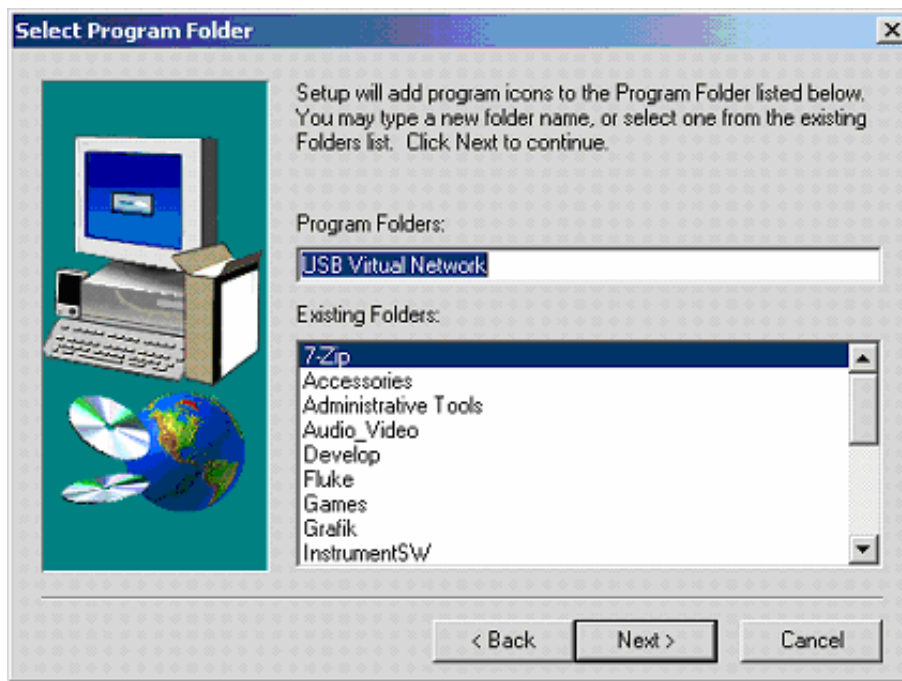
5. Choose destination folder and press **Next**.



ets004.bmp

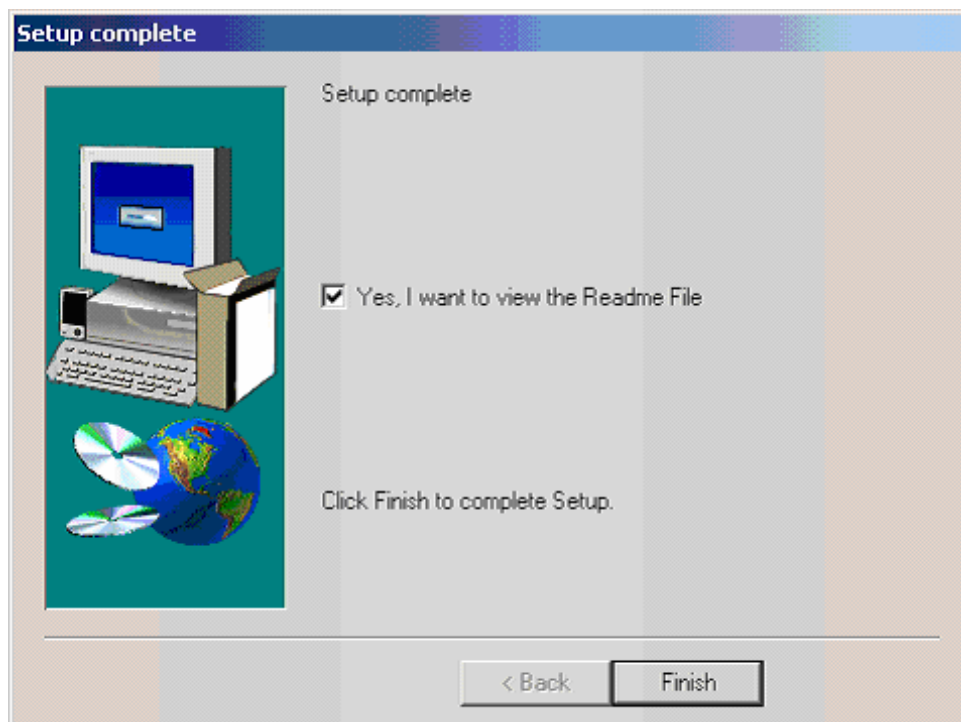
The Program Folder defaults to the previously selected USB Virtual Network.

6. Select this folder by pressing **Next**.



ets005.bmp

7. Press Finish to complete Setup.



ets006.bmp

Connecting the Power Quality Analyzer and PC

Plug the USB cable into the USB port of your computer.

Wait approximately 1 minute. Windows XP needs this time to assign a valid IP address to the network interface.

Note

Make sure the "Alternate Configuration" option is set to "automatic" in the "Internet Protocol (TCP/IP) properties" settings for your USB virtual network adapter.

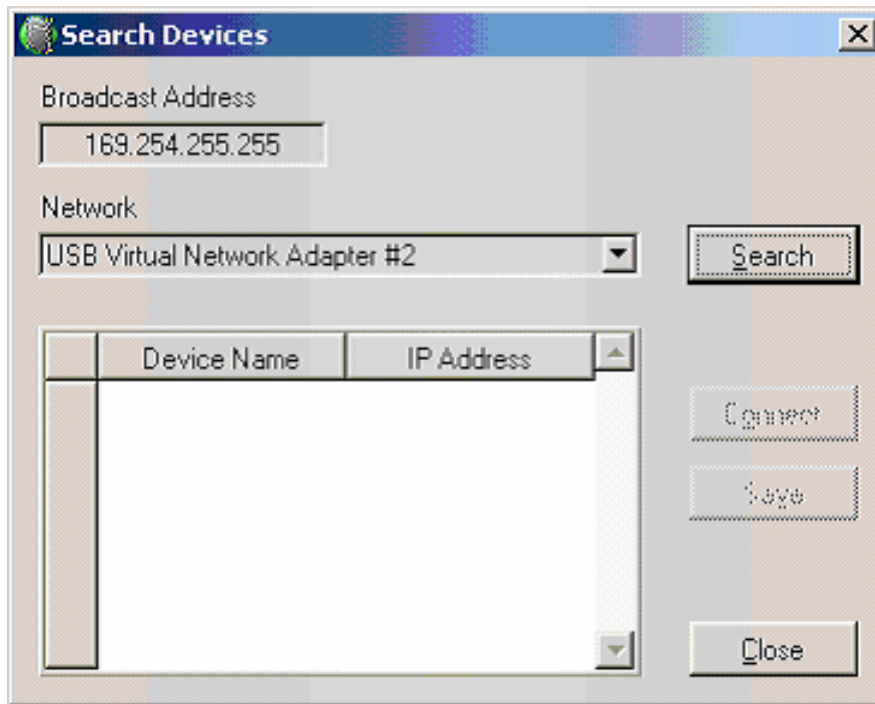
Plug the other end of the cable into the 1760. Watch the LED next to the CF card slot while connecting the USB cable.

If the LED is on then the USB link cable was successfully detected and activated. If the LED remains dark then disconnect the cable, wait 3 seconds and try again.

Selecting the Analyzer

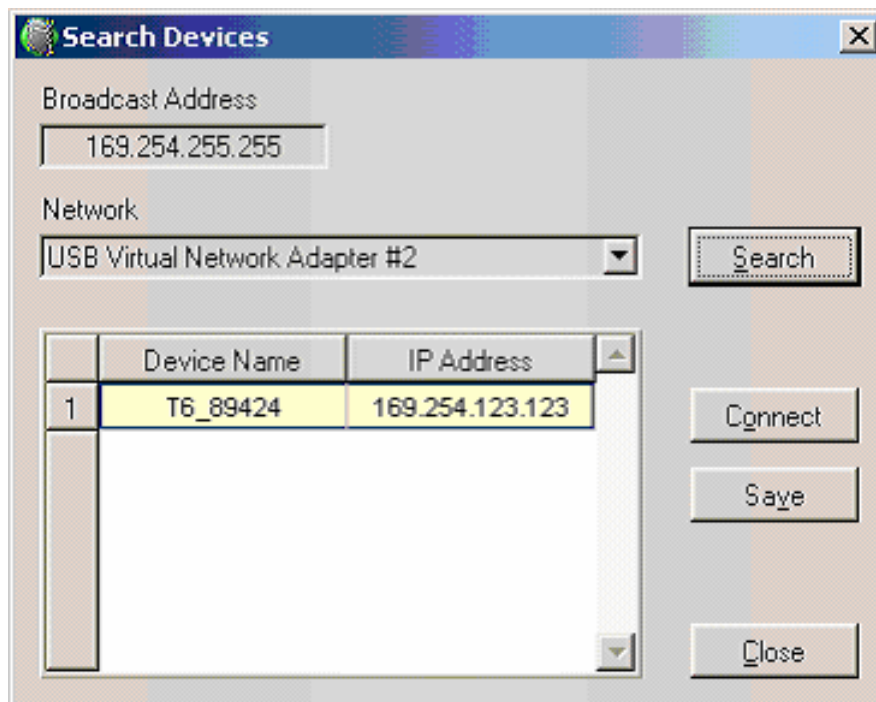
Launch PQ Analyze on your PC.

From the PQ Analyze main menu, select **Transfer>Fluke 1760>Search Devices**



ets007.bmp

Use the down arrow to select the **USB Virtual Network Adapter** and press **Search**.



ets008.bmp

Press **Connect**, and the window automatically closes.

You are now ready to use the 1760 Power Quality Analyzer with your PC.

For more information on using the Analyzer, and making and recording measurements, see the *Fluke 1760 Power Quality Analyzer Users Guide*.

Mouser Electronics

Authorized Distributor

Click to View Pricing, Inventory, Delivery & Lifecycle Information:

Fluke:

[FLUKE-1760 BASIC](#) [FLUKE-1760 TR US](#) [FLUKE-1760 US](#)