

4

3

2

1

D

D

C

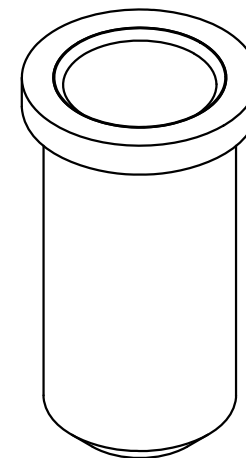
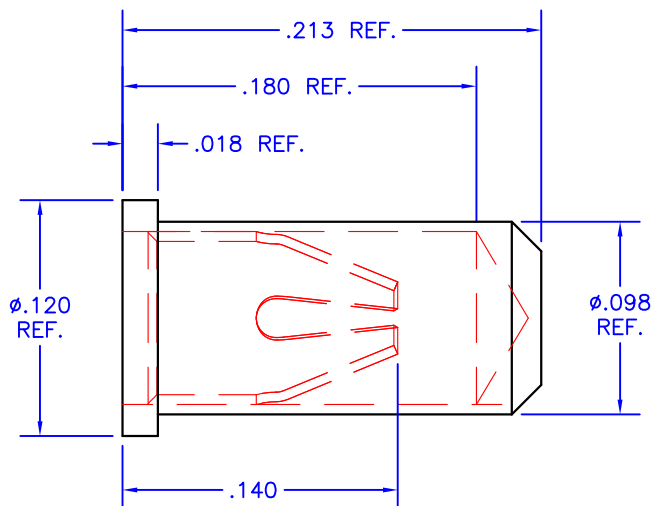
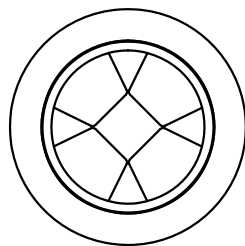
C

B

B

A

A

**NOTES:**

1. Unless otherwise noted, dimensions are in inches.
2. Shell: 360 brass, half-hard, with 10 μ in gold over nickel
3. Contacts: Beryllium copper with 30 μ in gold over nickel
4. Current rating: 11.2 amps, for 10°C temperature rise.
5. Solder mount in minimum .100 diameter mounting hole.
6. Mill-Max Part No. 0364-0-15-15-13-27-10-0

TOLERANCES - UNLESS
OTHERWISE SPECIFIED

.XX = \pm .01 [.254]
.XXX = \pm .005 [.127]
ANG. = \pm 5°

TITLE:
PIN RECEPTACLE .048-.064 DIA.SUBJECT:
MECHANICAL DRAWINGENGINEER:
D-MDRAWN BY:
R.MORDCAL:
13243SPL. OF
1 1

MODEL:

FILENAME:
MS04REV:
DDATE:
03JUN13**MS04**

4

3

2

1

Mouser Electronics

Authorized Distributor

Click to View Pricing, Inventory, Delivery & Lifecycle Information:

[Apex Microtechnology:](#)

[MS04](#)