

4

3

2

1

D

D

C

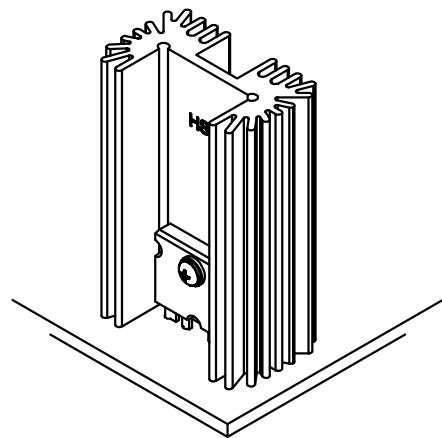
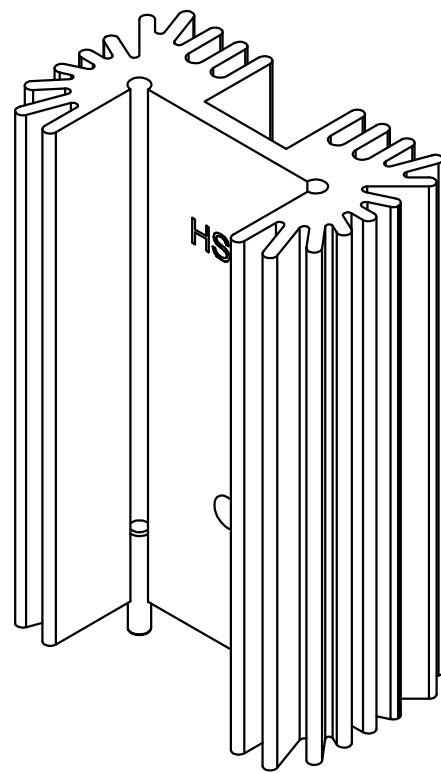
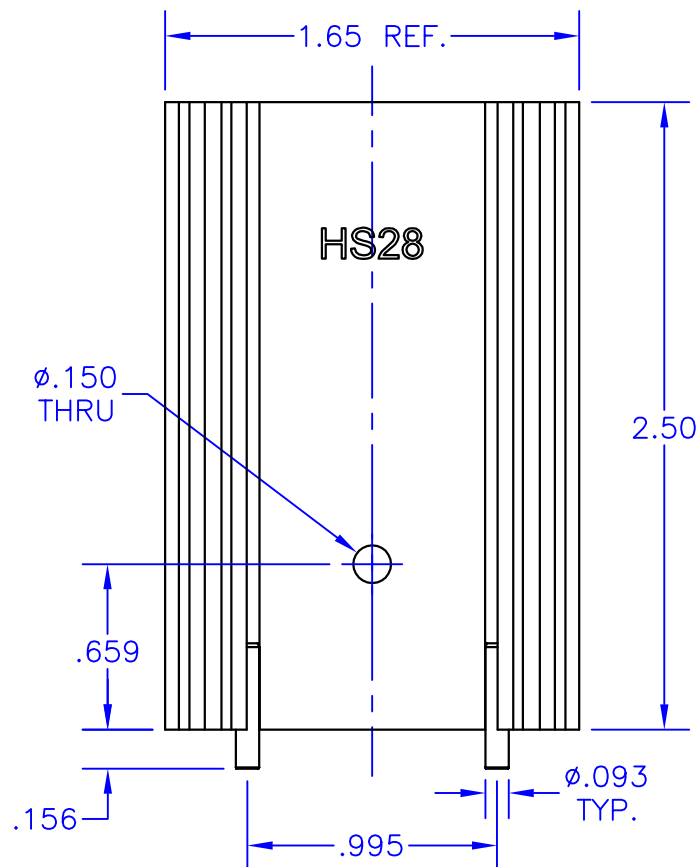
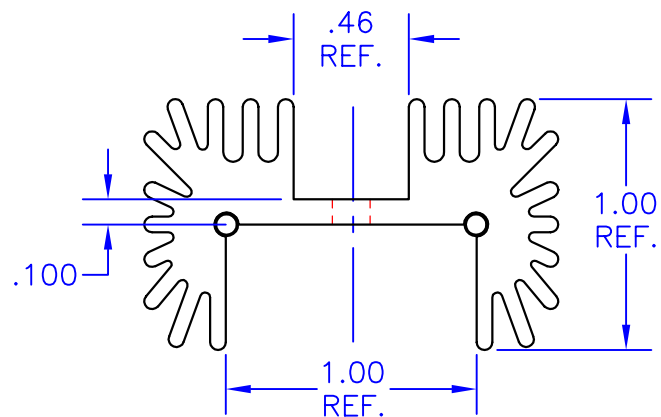
C

B

B

A

A



\*\*Note: Natural Convection based on 70°C temp rise above ambient (and based on 2.5 in. length). Source: <http://www.aavid.com/products/extrusion-heatsinks/63485>

### NOTES:

1. Unless otherwise noted, all dimensions are in inches.
2. Break all sharp edges, de-burr & remove loose chips.
3. Material: 6063-T5 aluminum (AAVID Thermalloy extrusion 63485)
4. Finish: Anodize per MIL-A-8625, Type II, Class 2, Black  
Typical breakdown voltage > 300V
5. Mark with contrasting ink as shown, if specified by P.O.
6. Approximate Weight: 2.6 oz. [74g]
7. Thermal rating: 6.1°C/W \*\*

TOLERANCES - UNLESS OTHERWISE SPECIFIED

.XX = ±.01 [.254]  
.XXX = ±.005 [.127]  
ANG. = ±5°



TITLE:

HEATSINK

SUBJECT:

MECHANICAL DRAWING

ENGINEER:

AOL

DRAWN BY:

J.FAY

DCA:

14040

SH:

1

OF

1

MODEL:

HS28

FILENAME:

HS28

REV:

D

DATE:

24MAR14

# Mouser Electronics

Authorized Distributor

Click to View Pricing, Inventory, Delivery & Lifecycle Information:

[Apex Microtechnology:](#)

[HS28](#)