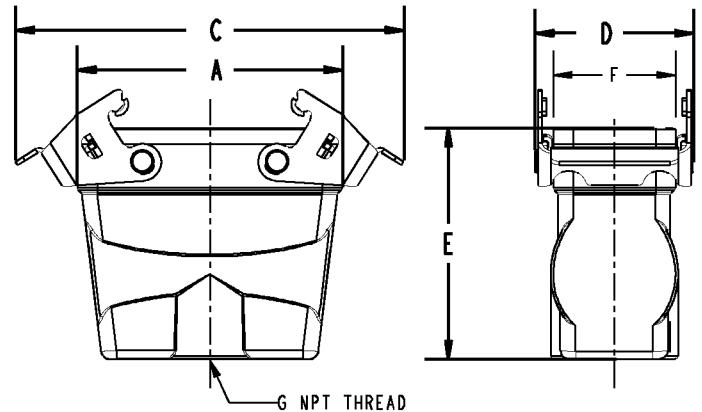
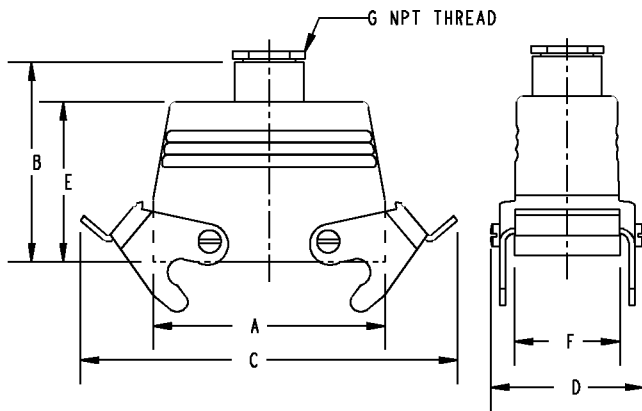


Thomas & Betts



CAT. No.	A	B	C	D	E	F	G "NPT" THREAD
LH210	2.87 (73)	2.64 (67)	4.53 (115)	2.28 (58)	1.89 (48)	1.69 (43)	1/2
LH216-H	3.68 (93.5)	3.46 (88)	5.34 (135.5)	2.28 (58)	2.99 (76)	1.69 (43)	3/4
LH316-H	3.68 (93.5)	3.46 (88)	5.34 (135.5)	2.28 (58)	2.99 (76)	1.69 (43)	1
LH224	4.72 (120)	3.94 (100)	6.38 (162)	2.28 (58)	2.95 (75)	1.69 (43)	3/4
LH324	4.72 (120)	3.94 (100)	6.38 (162)	2.28 (58)	2.95 (75)	1.69 (43)	1
LH232A	3.23 (82)	4.41 (112)	4.92 (125)	2.72 (69)	2.99 (76)	1.69 (43)	3/4
LH332A	3.23 (82)	4.41 (112)	4.92 (125)	2.72 (69)	2.99 (76)	1.69 (43)	1
LH216MV	3.7 (94)		5.4 (137)	2.2 (56)	3.2 (81.5)	1.77 [45]	3/4

NOTES:

- MATERIAL:
HOUSING - DIE CAST ALUMINUM WITH EPOXY COAT FINISH
LEVERS - STEEL WITH ZINC & CHROME PLATING
- ENVIRONMENTAL RATING: IP65 WHEN MATED & LOCKED
- UL RECOGNIZED AND CSA CERTIFIED
- DIMENSIONS ARE IN INCHES (MILLIMETERS).

GENERAL NOTES

- ALL DIMENSIONS ARE FOR REFERENCE ONLY.
- DIMENSIONS IN BRACKETS [] ARE IN METRIC UNITS.

REVISIONS

SEE ERN (****)
FOR APPROVAL SIGNATURES
& RELEASE DATE.
PROJECT NO: ****

Thomas & Betts
www.tnb.com

DESCRIPTION:

LATCHING HOODS TOP ENTRY WITH DOUBLE LEVERS

ORIGINAL PROJECT NO / (ERN NO)

TM400024 / (2012527)

SHEET NO:

1 OF 1

REV. NO:

0

DRAWING NO:

WSD-000604

Mouser Electronics

Authorized Distributor

Click to View Pricing, Inventory, Delivery & Lifecycle Information:

[ABB:](#)

[LH216MV](#)