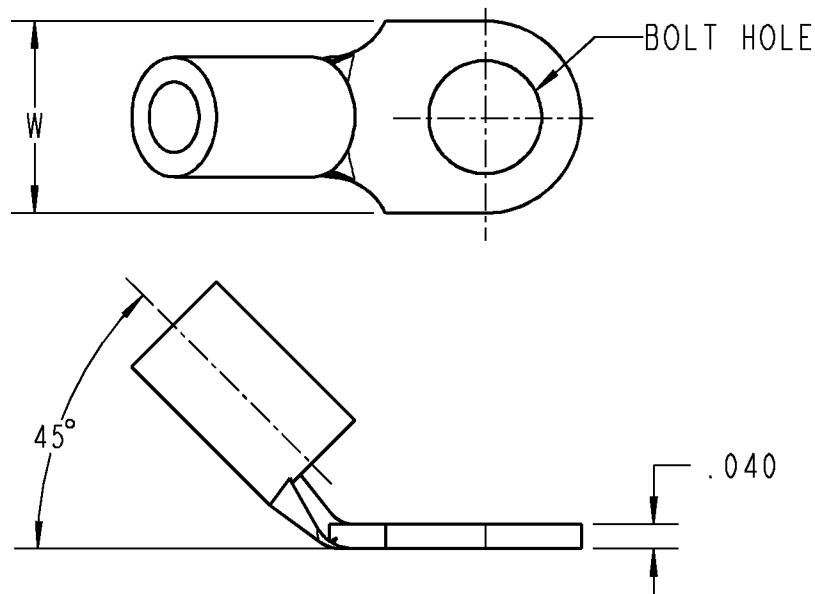




ALL DIMENSIONS ARE APPROXIMATE.

CATALOG No.	DIM. W MAX	WIRE RANGE	BOLT HOLE
C26UF	.38	10-12	#10
C33UF	.32	10-12	#6
C36UF	.32	10-12	#10
C70UF	.54	10-12	5/16
C71UF	.51	10-12	1/4
C72UF	.60	10-12	5/16
C73UF	.60	10-12	3/8
C75UF	.72	10-12	1/2
C77UF	.32	10-12	#8



NOTES:

1. MATERIAL: ELECTROLYTIC COPPER
2. FINISH: TIN PLATED
3. SAME AS STANDARD T&B CATALOG NUMBER BUT WITH A "UF" SUFFIX FOR 45° BEND
4. INSTALLATION TOOLS: WT111M, WT112M, WT2000, ERG-2002

GENERAL NOTES

1. ALL DIMENSIONS ARE FOR REFERENCE ONLY.
2. DIMENSIONS IN BRACKETS [] ARE IN METRIC UNITS.

REVISIONS

SEE ERN (2005696)
FOR APPROVAL SIGNATURES
& RELEASE DATE.
PROJECT NO: TM401323

Thomas & Betts
www.tnb.comDESCRIPTION: **SPECIAL STA-KON TERMINALS 45° BEND
C-SERIES**

ORIGINAL PROJECT NO / (ERN NO)

TM401323 / (2005696)

SHEET NO:

1 OF 1

REV. NO:

-

DRAWING NO:

WSD-000175

Mouser Electronics

Authorized Distributor

Click to View Pricing, Inventory, Delivery & Lifecycle Information:

[ABB:](#)

[C26UF](#) [C77UF](#) [C33UF](#)