

Off-line Writer User Manual

Release Version B

Copyright © 2000~2022 Integrated Silicon Solution, Inc. All rights reserved. ISSI reserves the right to make changes to this specification and its products at any time without notice. ISSI assumes no liability arising out of the application or use of any information, products or services described herein. Customers are advised to obtain the latest version of this device specification before relying on any published information and before placing orders for products.

Integrated Silicon Solution, Inc. does not recommend the use of any of its products in life support applications where the failure or malfunction of the product can reasonably be expected to cause failure of the life support system or to significantly affect its safety or effectiveness. Products are not authorized for use in such applications unless Integrated Silicon Solution, Inc. receives written assurance to its satisfaction, that:

- a.) the risk of injury or damage has been minimized;
- b.) the user assumes all such risks; and
- c.) potential liability of Integrated Silicon Solution, Inc is adequately protected under the circumstances

Lumissil Off-line Writer can help customers program Lumissil MCU flash during the product mass production stage. Customers can use this device with USB power to connect with customer's MCU board via SPI for flash programming without PC.

1. Hardware Introduction

1.1 Hardware Configuration

PWR: 5V power supply from the mini-USB connector (Do not turn on the power of the Target Board during flash programming.)

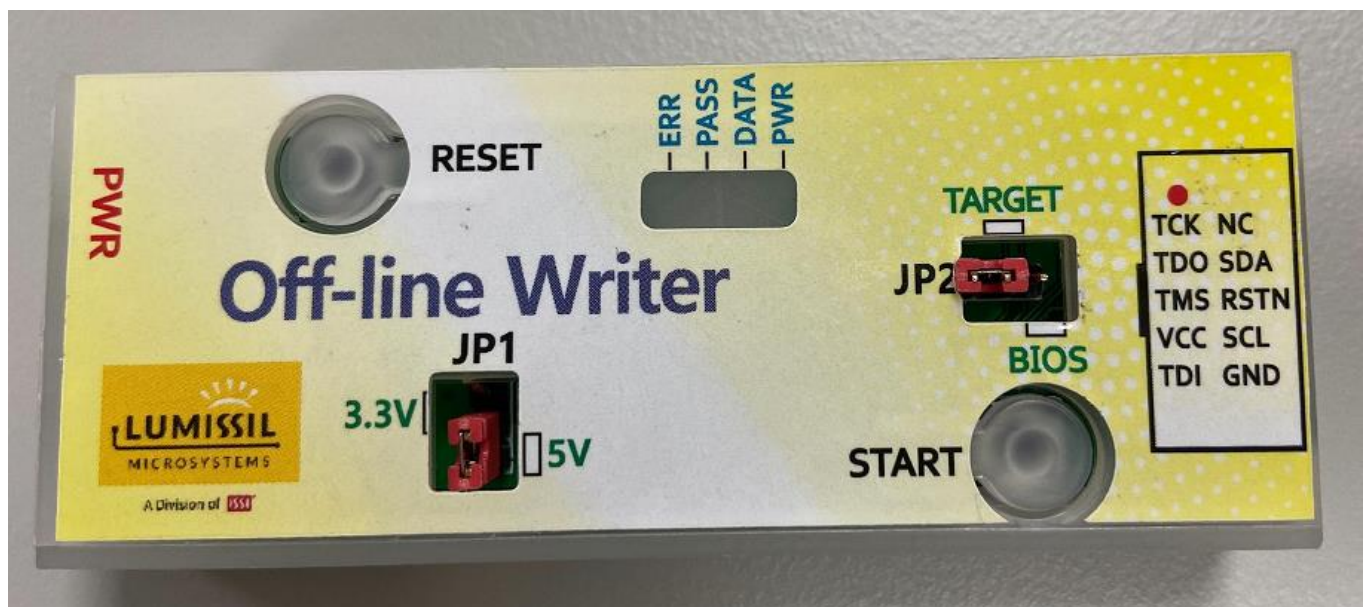
JP1: Two Power selections: 5V (bottom switch), 3.3V (top switch) (Depend on the MCU ISP interface power requirement of the target board)

JP2: Update Selections: TARGET (left switch), BIOS for Off-line Writer (right switch)

START: Start key

RESET: Reset key

ISP Connector: Writer Mode & ISP mode connector



1.2 The definition of PWR/DATA/PASS/ERR LED



1. PWR LED on/ ERR red LED off/ PASS green LED on:
Off-line Writer is ready for operation after power-up.
2. PASS green LED blinking: The burning process is in progress.
3. PASS green LED on and DATA blue LED on: The burning process is completed correctly.

1.3 What does the ERR LED mean

1. ERR red LED on: The execution of ISP command failed.
2. ERR red LED blinking: BurningTimes counter has reached the programming counter limit setting.
3. ERR red LED on and PASS green LED blinking: Main memory download/verify failed.
4. ERR red LED on and PASS green LED on: IFB download/verify failed.
5. If ERR red LED is still on after 10 seconds after Off-line Writer is powered on, please try to press the “**RESET**” button to reset the device for usage.

2. Load burning code to Off-line Writer for Target

2.1 Off-line Writer connection with EzISP board

Below is hardware setup for Off-line Writer and EzISP connection.
EzISP USB port is connected to the PC USB port.
JP2 is set at **BIOS** mode.



2.2 Program code to Off-line Writer via EzISP

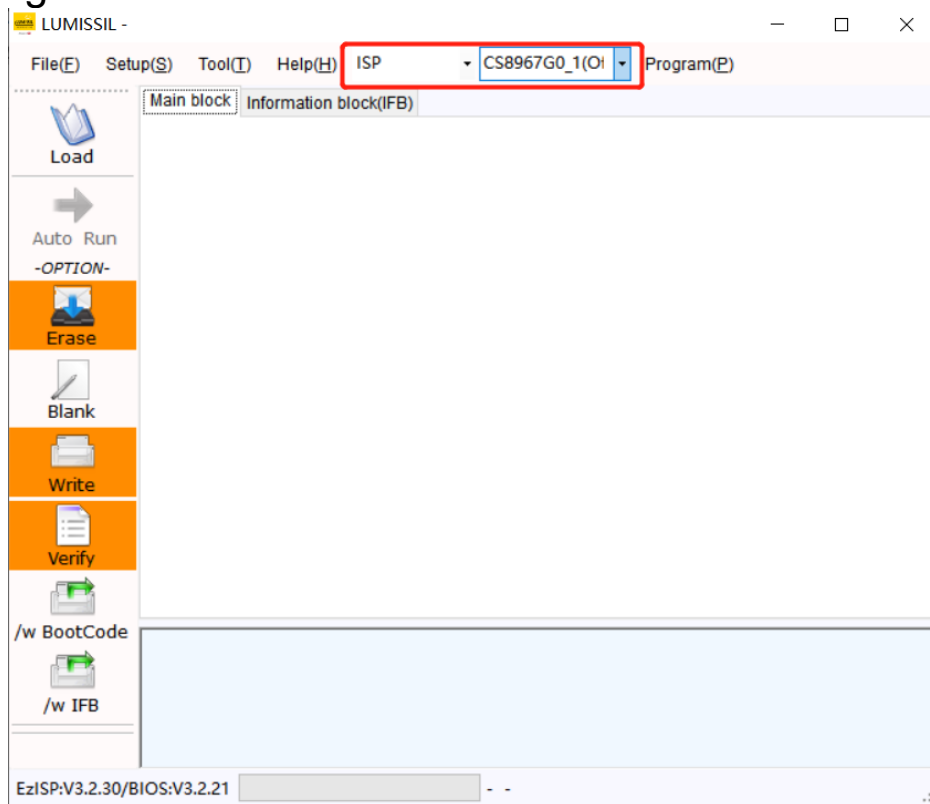
The Off-line Writer LED indicator is as below figure. PWR LED will be on and ERR LED will be in red color when the device power is on. After 7~10 seconds, ERR red LED will be off and PASS green LED will be on. Now Off-line writer is ready for operation.

When burning code to Off-line Writer via EzISP is in process, PASS LED will be green blinking and will turn stable green once burn-in completes successfully. Meanwhile, DATA blue LED will be in stable blue color to indicate burn-in completion successfully. ERR LED will be in red color when there is an error occurred.

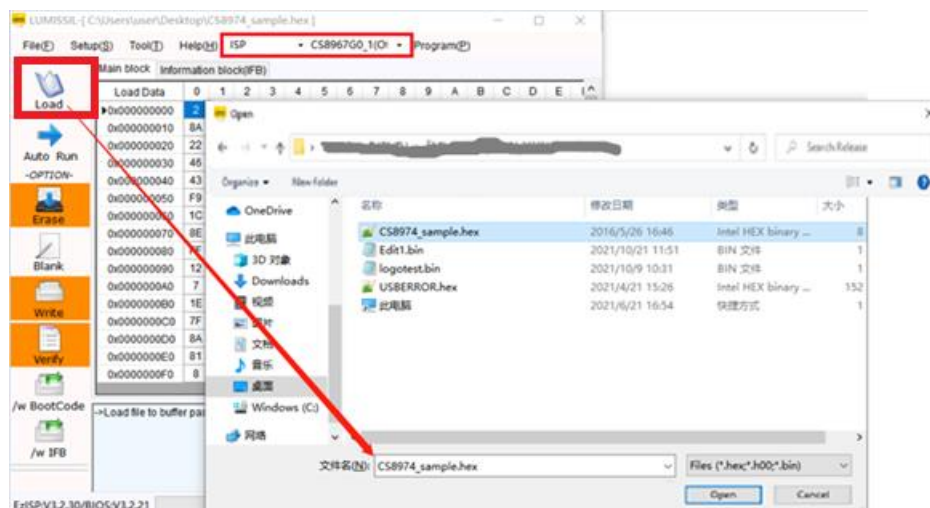


Below are four steps to program code to Off-line Writer via EzISP

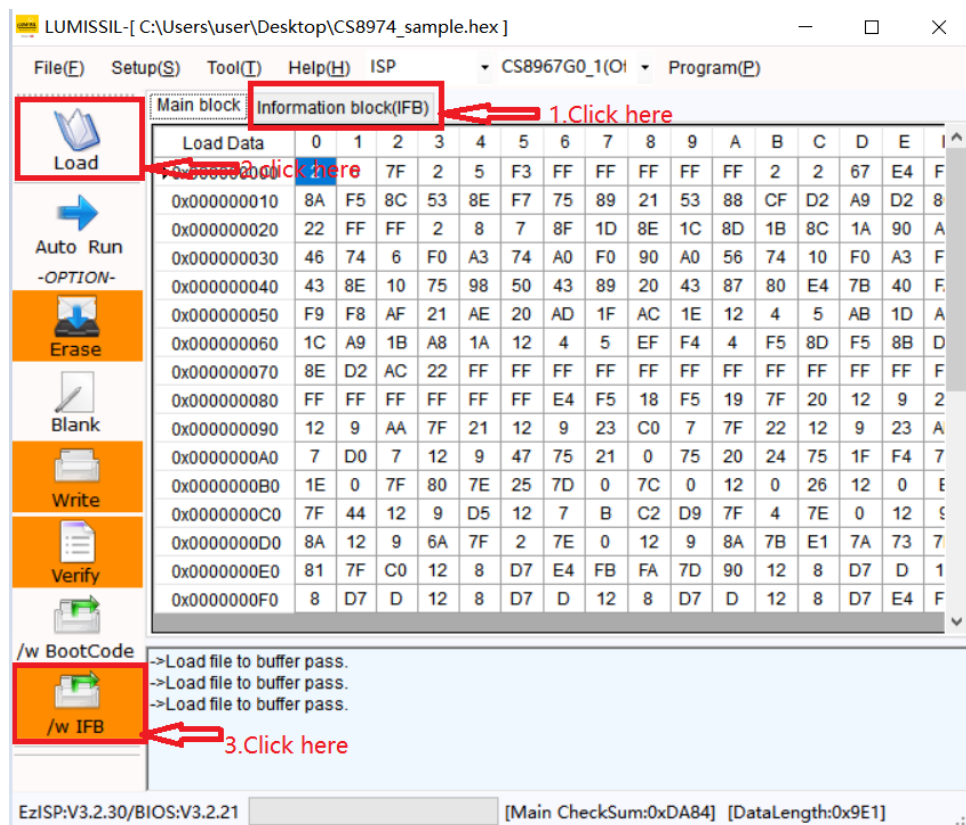
Step 1: Run EzISP v3.2.x or later version. Select Off-line Writer device name **CS8967G0_1(off)** and **ISP Mode** as below figure.



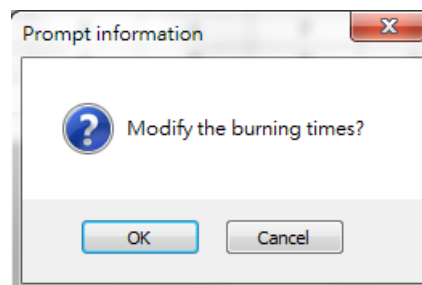
Step 2: Load the burning code file as below. Press “**Load**” and select the burning hex file and click “**Open**”



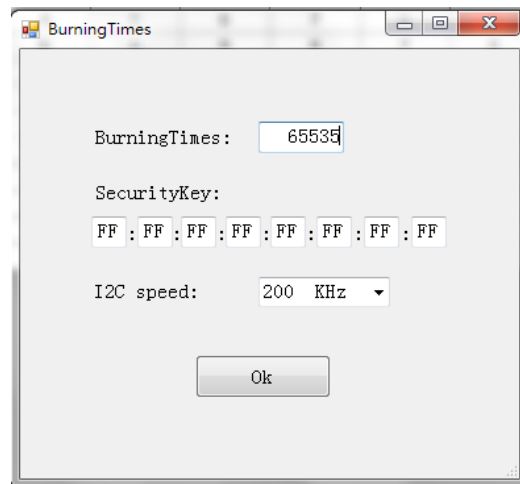
Step 3: Load burning code file for IFB as below if necessary. If it is not necessary, please skip this step.



Step 4: Check **Erase**, **Write**, **Verify**, and press **“Auto Run”**. There pops out the below dialog box.



If you do not need to modify the parameters, press **“Cancel”** or close the window by clicking the x at the right top in the above figure. Press **“OK”** and there pops out below window.



BurningTimes: Set the burning times between 1~65535. This setting will limit the programming count of Off-line Writer.

SecurityKey: Set the security code that you want to choose for the target board.

I2C speed: Set the communication speed between the Off-line Writer and the target board.

At this point, EzISP will start communication with the Off-line Writer for ISP commands, and “**Handshake Error!**” message as below figure might pop out. In the case “**Handshake Error!**” message pops out, **press the “RESET” button of Off-line Writer within five seconds to retry.**

After Off-line Writer is successfully programmed, users can refer to Chapter 3 to program the target boards with the Off-line Writer without EzISP connecting to the PC.

LUMISSIL-[C:\Users\user\Desktop\CS8974_sample.hex]

File(E) Setup(S) Tool(T) Help(H) ISP CS8967G0_1(O) Program(P)

Main block Information block(IFB)

Load Data	0	1	2	3	4	5	6	7	8	9	A	B	C	D	E	F
0x00000000	2	6	7F	2	5	F3	FF	FF	FF	FF	FF	2	2	67	E4	F
0x00000010	8A	F5	8C	53	8E	F7	75	89	21	53	88	CF	D2	A9	D2	8
0x00000020	22	FF	FF	2	8	7	8F	1D	8E	1C	8D	1B	8C	1A	90	A
0x00000030	46	74	6	F0	A3	74	A0	F0	90	A0	56	74	10	F0	A3	F
0x00000040	43	8E	10	75	98	50	43	89	20	43	87	80	E4	7B	40	F
0x00000050	F9	F8	AF	21	AE	20	AD	1F	AC	1E	12	4	5	AB	1D	A
0x00000060	1C	A9	1B	A8	1A	12	4	5	EF	F4	4	F5	8D	F5	8B	D
0x00000070	8E	D2	AC	22	FF	FF	FF	FF	FF	FF	FF	FF	FF	FF	FF	F
0x00000080	FF	FF	FF	FF	FF	FF	E4	F5	18	F5	19	7F	20	12	9	2
0x00000090	12	9	AA	7F	21	12	9	23	C0	7	7F	22	12	9	23	A
0x000000A0	7	D0	7	12	9	47	75	21	0	75	20	24	75	1F	F4	7
0x000000B0	1E	0	7F	80	7E	25	7D	0	7C	0	12	0	26	12	0	E
0x000000C0	7F	44	12	9	D5	12	7	B	C2	D9	7F	4	7E	0	12	9
0x000000D0	8A	12	9	6A	7F	2	7E	0	12	9	8A	7B	E1	7A	73	7
0x000000E0	81	7F	C0	12	8	D7	E4	FB	FA	7D	90	12	8	D7	D	1
0x000000F0	8	D7	D	12	8	D7	D	12	8	D7	D	12	8	D7	E4	F

Load
Auto Run
-OPTION-
Erase
Blank
Write
Verify
/w BootCode
/w IFB

*****Handshake Error!
*****Handshake Error!
*****Handshake Error!
*****Handshake Error!
*****Handshake Error!

A "handshake error" occurred!
Press the "RESET" key within 5 seconds.

EzISP:V3.2.30/BIOS:V3.2.20 [Main CheckSum:0xDA84] [DataLength:0x9E1]

3. Use Off-line Writer to program Target boards

After the burning code is loaded to Off-line Writer, users can program target devices without PC and the burning counter will depend on the BurningTimes setting in Step 4 of [Section 2.2](#).

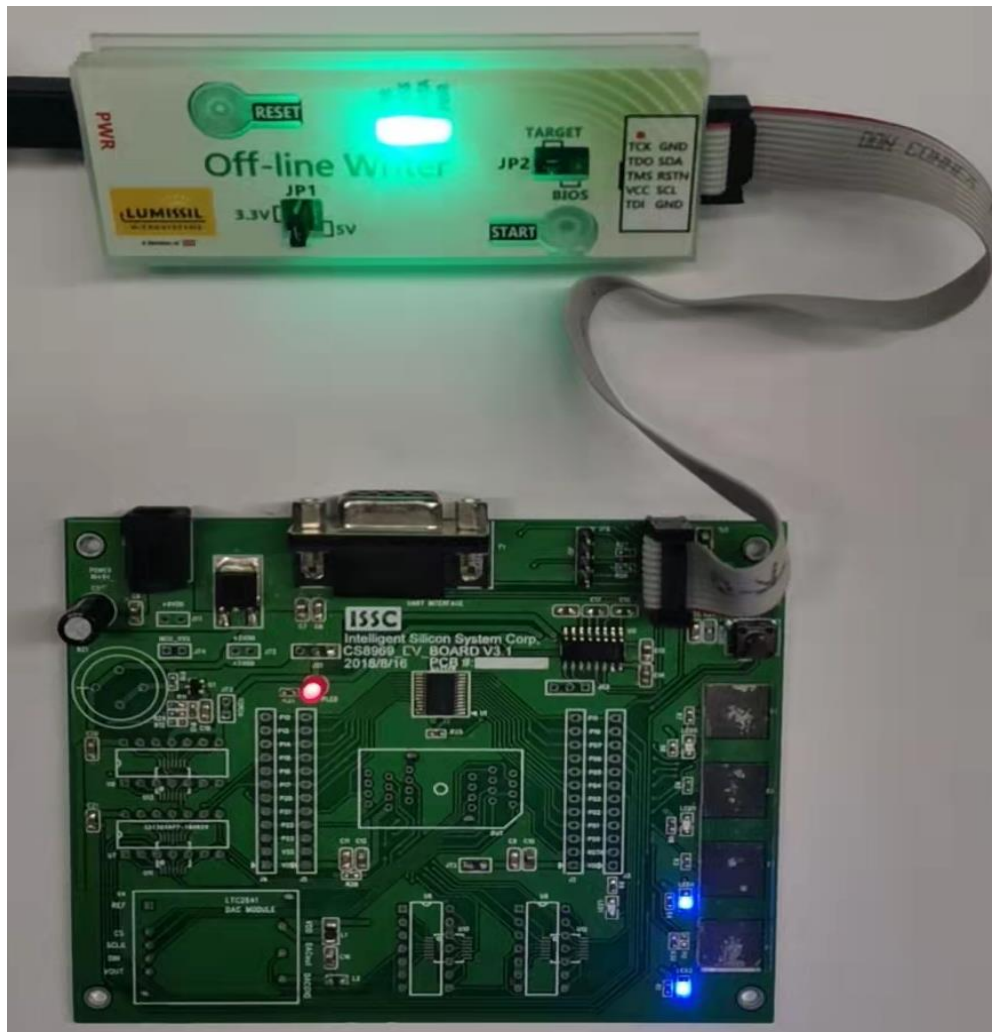
3.1 Hardware Connection

JP1: Choose 3.3V or 5V Power. The selection depends on the MCU ISP interface power requirement of the target board.

JP2: Choose “**TARGET**” or “**BIOS**” mode. Choose **TARGET** mode to program target boards.

TARGET: Program target boards.

BIOS: Load burn-in code to Off-line Writer.



The ISP connector pins are defined as follows:



Note: Users need to reserve SDA / SCL (P1.4 / P1.5 or P1.2 / P1.3) pins of the target board MCU for connection with ISP connector.

3.2 Burning program to Target board

- Step 1: After confirming the connection setup is correct, connect the USB power supply and the PWR LED will be on and ERR LED will be in red color.
- Step 2: After 7-10 seconds, the PASS green LED will be on and the ERR LED will be off. Now the Off-line Writer is ready for operation.
- Step 3: Press “**START**” button and the burning process starts with the PASS green LED blinking.
- Step 4: The program is burned correctly with the PASS green LED on and DATA blue LED on.

3.5 Supported part number list

Below is our Off-line Writer MCU-supported list so far. Please contact us if you can't find your interested Lumissil MCU parts.

IS31CS8974, IS32CS8974, IS31CS8975-16P, IS32CS8975-16P, IS31CS8969, IS32CS8969, IS31CS8993, IS32CS8973,

IS31CS5523, IS31CS5514, IS31CS5110, IS32CS5110,
IS31CS5111, IS32CS5111, IS31CS8964, IS31SE5117,
IS32SE5117, ISSE5118, IS32SE5118, IS31SE5120, IS32SE5120

REVISION HISTORY

Revision	Detailed Information	Date
A	First Formal Release	2022.07.28
B	<ol style="list-style-type: none">1. Change EzISP version format from 3.2.xx to 3.2.x2. Move Section 3.3 The definition of PWR/DATA/PASS/ERR LED to Section 1.23. Move Section 3.4 The ERR LED status when there is an error to Section 1.3 What does ERR LED mean?4. Add parts IS31SE5117, IS32SE5117, ISSE5118, IS32SE5118, IS31SE5120 and IS32SE5120 into Off-line Writer support list.	2022.10.21

Mouser Electronics

Authorized Distributor

Click to View Pricing, Inventory, Delivery & Lifecycle Information:

[Lumissil:](#)

[EzISP Board](#)