

*ZED Box Mini

Orin™ Nano 4GB

Orin™ Nano 8GB

Orin™ NX 8GB

Orin™ NX 16GB

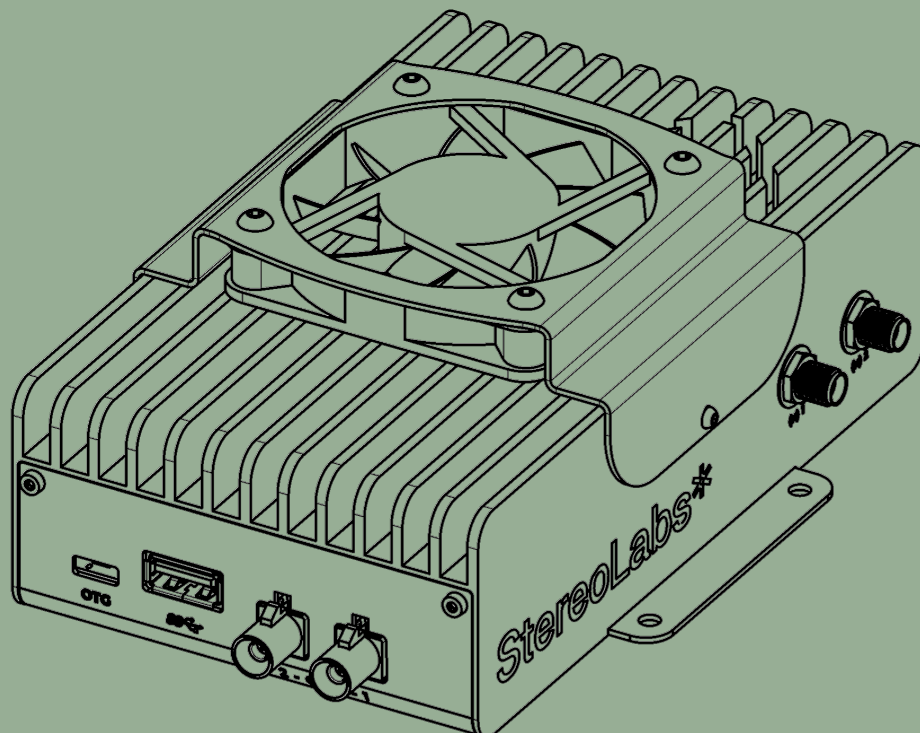
Embedded Computer Overview

The ZED Box Mini is a compact, high-performance embedded computing system built on NVIDIA Jetson Orin™ modules.

Engineered specifically for AI-driven vision-based applications, the ZED Box Mini provides essential I/O interfaces, including support for GMSL2 connectivity.

Its design prioritizes scalability and affordability, making it the ideal solution for large-scale deployments of AI-powered robotics and vision-based systems.

Whether you're developing autonomous robots, smart cameras, or edge AI systems, the ZED Box Mini offers the performance and flexibility needed to bring your projects to life.



*ZED Box Mini Overview



Optimized for GMSL2 camera-based applications

The ZED Box Mini supports seamless connectivity for up to two ZED X cameras via GMSL2, monocular and stereo cameras. Designed to maximize the potential of the ZED camera series, the ZED Box Mini is compatible with all current Stereolabs camera models with drivers available for various configurations, delivering unmatched integration.

Compact and cost-effective

The ZED Box Mini combines a compact design with cost-effectiveness, making it ideal for deploying AI-powered systems at scale. Its small form factor ensures easy integration into space-constrained environments, while its affordability enables large deployments without compromising performance.

Designed for Advanced AI Computing

Whether you're developing autonomous robots, smart cameras, or edge AI systems, the ZED Box Mini offers the performance and flexibility needed to bring your AI applications to life.

The ZED Box Mini natively supports the ZED SDK, delivering unmatched performance for vision-based AI applications.

Ready-to-use out of the box

The ZED Box Mini comes set up with all the necessary components for development, such as the latest NVIDIA JetPack, and features an integrated mounting plate, making it very easy to attach to any support.

Options include Wifi and various NVIDIA Jetson Orin™ modules, all supported in MAXN SUPER mode.

ZED Box Mini | Available Models

Model	ZED Box Mini Nano 4GB	ZED Box Mini Nano 8GB	ZED Box Mini NX 8GB	ZED Box Mini NX 16GB
AI Module	Jetson Orin™ Nano 4GB	Jetson Orin™ Nano 8GB	Jetson Orin™ NX 8GB	Jetson Orin™ NX 16GB
AI Performance *	34 TOPs	67 TOPs	117 TOPs	157 TOPs
Ideal camera configurations	1x ZED X GS or 2x ZED X One GS	2x ZED X GS / ZED X One GS	2x ZED X GS / ZED X One GS	2x ZED X GS / ZED X One GS
Compute capabilities	Medium computer vision applications for single stereo camera setups	Medium computer vision applications for dual stereo camera setups	Advanced computer vision applications for dual stereo camera setups	Cutting-Edge computer vision applications for dual stereo camera setups
Performance **	Single Stereo Camera Depth @30fps with 80% GPU load	Single Stereo Camera Depth @30fps with 36% GPU load	Single Stereo Camera Depth @30fps with 28% GPU load	Single Stereo Camera Depth @30fps with 23% GPU load
		Dual Stereo Camera Depth @30fps with 64% GPU load	Dual Stereo Camera Depth @30fps with 55% GPU load	Dual Stereo Camera Depth @30fps with 47% GPU load

* for Jetson™ Power in MAXN SUPER mode

** ZED X GS cameras with ZED SDK5.0 NEURAL LIGHT Model with Jetson™ in a non-MAXN SUPER mode with 1920x1200 image resolution

*ZED Box Mini

Technical Specifications

Model	ZED Box Mini Nano 4GB	ZED Box Mini Nano 8GB	ZED Box Mini NX 8GB	ZED Box Mini NX 16GB
Reference	ZBX-420010 (No WiFi) ZBX-420110 (With WiFi)	ZBX-430010 (No WiFi) ZBX-430110 (With WiFi)	ZBX-440010 (No WiFi) ZBX-440110 (With WiFi)	ZBX-450010 (No WiFi) ZBX-450110 (With WiFi)
AI Module	Jetson Orin™ Nano 4GB	Jetson Orin™ Nano 8GB	Jetson Orin™ NX 8GB	Jetson Orin™ NX 16GB
AI Performance	34 TOPs	67 TOPs	117 TOPs	157 TOPs
Jetson™ Power Mode	10W 25W MAXN SUPER	15W 25W MAXN SUPER	10W 15W 20W 40W MAXN SUPER	10W 15W 25W 40W MAXN SUPER
Video Encode	1080p30 supported by 1-2 CPU cores	1080p30 supported by 1-2 CPU cores	1x 4K @ 60 (H.265) 3x 4K @ 30 (H.265) 6x 1080p @ 60 (H.265) 12x 1080p @ 30 (H.265)	1x 4K @ 60 (H.265) 3x 4K @ 30 (H.265) 6x 1080p @ 60 (H.265) 12x 1080p @ 30 (H.265)
Video Decode	1x 4K @ 60 (H.265) 2x 4K @ 30 (H.265) 5x 1080p @ 60 (H.265) 11x 1080p @ 30 (H.265)	1x 4K @ 60 (H.265) 2x 4K @ 30 (H.265) 5x 1080p @ 60 (H.265) 11x 1080p @ 30 (H.265)	1x 8K @ 30 (H.265) 2x 4K @ 60 (H.265) 4x 4K @ 30 (H.265) 9x 1080p @ 60 (H.265) 18x 1080p @ 30 (H.265)	1x 8K @ 30 (H.265) 2x 4K @ 60 (H.265) 4x 4K @ 30 (H.265) 9x 1080p @ 60 (H.265) 18x 1080p @ 30 (H.265)
Display	1x HDMI 1.4	1x HDMI 1.4	1x HDMI 2.1	1x HDMI 2.1

Interfaces and Storage

Cameras Inputs	2x GMSL2 FAKRA-Z 1x USB3.0 Type-A
Ethernet	1x 10/100/1000 Base-T Ethernet RJ45
Debug	1x Micro USB2.0 Type-B for system flashing & OTG
Camera Sync.	1x GMSL2 Camera Sync. Trigger Input 1x GMSL2 Camera Sync. Trigger Output
Fan	1x 12V Fan Entry. The fan installation is mandatory when the Jetson™ operates in MAXN SUPER mode.
Misc. Connector	1x 10 pins Header Connector including : 1x CAN PHY, 1x UART, 2x GPIOs, 1x 5V, 1x 3.3V, 2x GND
Storage	NVMe SSD 256GB mounted on M.2 Key-M 2242 socket
Wifi (Optional)	WiFi 6 with 1x Intel AX210 Module mounted on M.2 Key-E 2230 socket and 2x 2.4/5GHz WiFi antennas

Power

Power Input	DC 10.5V to 13.5V - 60W max
Power Interface	Screwable Terminal block connector TBP01P1W-508-02GR

Mechanical

Weight	600g (1.32lbs)
Dimensions	152.8x 103.8x 41.5 mm (6.02 x 4.09 x 1.63") LxWxH
Case	Black Anodized Aluminum Heatsink. White Powder-Coated Bent Steel for the lower part of the product.
Operating Temp.	-20°C to +50°C (-4°F to 122°F). Storage from -40°C to +85°C (-40°F to 185°F).
Humidity	10% to 90% (Non-Condensing)
Certifications	CE & FCC

*ZED Box Mini I/O Interfaces



Micro USB2.0
Type-B

USB3.0
Type-A

GMSL2 FAKRA-Z
Connectors



GPIO
Connector

12V Fan
Connector

HDMI
Type-A

GMSL2
SYNC-IN

GMSL2
SYNC-OUT



Gigabit
Ethernet Port

Reset
Button

Power
LED

Recovery
Mode Button

Power Input



WiFi Female SMA
Connectors *

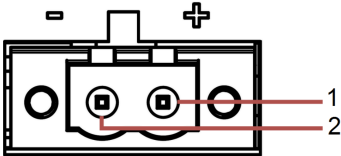
* WiFi Module is included with compatible versions

*ZED Box Mini Pinout Table

Power Input Connector

The ZED Box Mini series supports a nominal voltage of 12V (+/- 1.5V) via its dedicated Terminal Block connector.

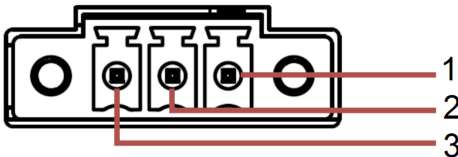
Pinout	
Pin Number	Description
1	DC IN 12V
2	GND



SYNC - IN Connector

The synchronization-input connector is used as a frame-sync trigger input in order to synchronize image acquisition on multiple GMSL2 cameras connected to different ZED Box Mini. The connector is a Same Sky 3-pin Terminal Block, that mates with TBP02P1W-381-03BE.

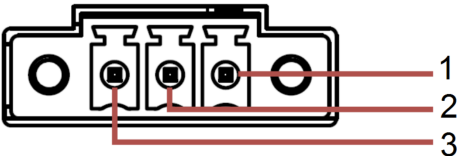
Pinout	
Pin Number	Description
1	TRIG_INFO
2	GND
3	TRIG_IN



SYNC - OUT Connector

The synchronization-output connector is used as a frame-sync trigger input in order to synchronize image acquisition on multiple GMSL2 cameras connected to different ZED Box Mini. The connector is a Same Sky 3-pin Terminal Block, that mates with TBP02P1W-381-03BE.

Pinout	
Pin Number	Description
1	GND
2	GND
3	TRIG_OUT



FAN Connector

The ZED Box Mini includes a dedicated 12V-compatible fan connector to support active cooling solutions.

Pinout	
Pin Number	Description
1	FAN_12V
2	GND

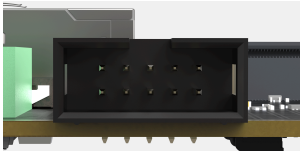
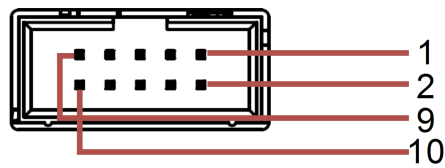


*ZED Box Mini Pinout Table

MISCELLANEOUS (GPIO) Connector

The Miscellaneous connector, labeled GPIO on the ZED Box Mini, is mainly used for debug and testing purposes.

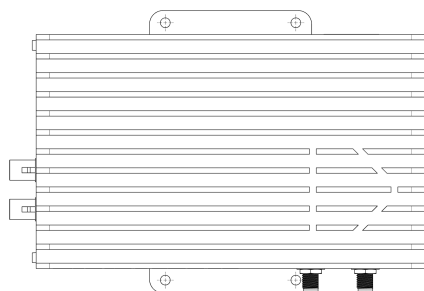
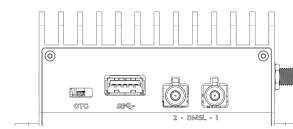
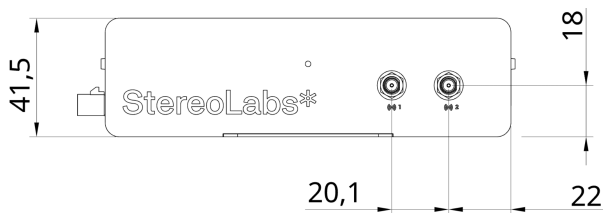
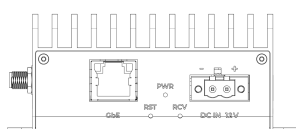
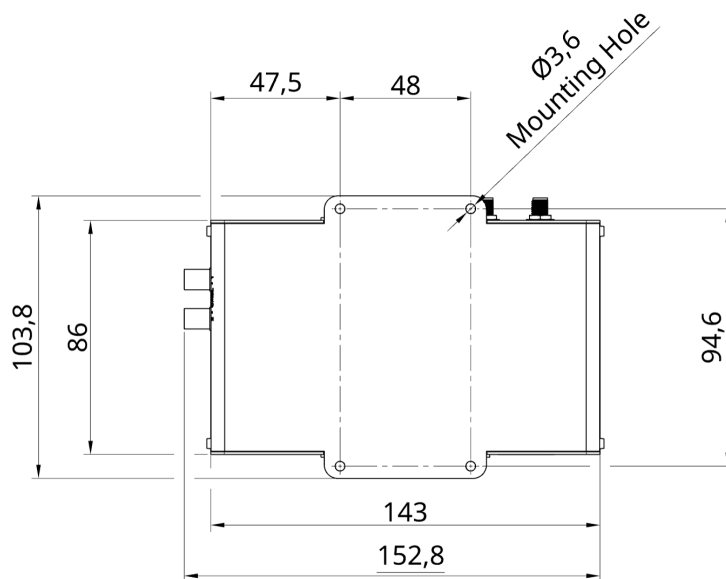
Pinout	
Pin Number	Description
1	VCC_5V
2	GND
3	GPIO_11
4	GPIO_12
5	CAN_RX
6	CAN_TX
7	VCC_3V3
8	GND
9	UART_RXD
10	UART_TXD



Standard Connectors

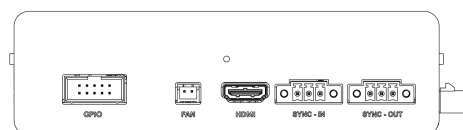
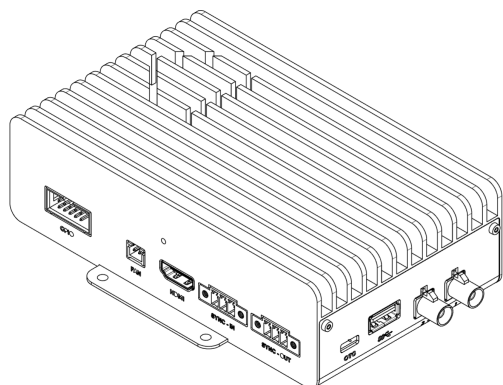
Connector	Description	Pinout
FAKRA-Z GMSL2	The two separated FAKRA-Z connectors each one for connected a GMSL2 camera through a single coaxial cable.	Please refer to the FAKRA-Z standards.
USB3.0 Type-A	The USB3.0 Type-A connector supports up to 5Gbps data rate. It is compliant with the requirements of Super Speed (SS), High Speed (HS), Full Speed (FS) and Low Speed (LS).	Please refer to the USB3.0 Type-A standards.
Micro-USB2.0 Type-B (OTG)	The Micro USB2.0 Type-B connector can be used for OTG functions, or paired with the use of the Recovery button to flash a new Image on the device. In non-recovery mode, this connector provides a serial output that can be used to access the device through a serial console.	Please refer to the USB3.0 Type-A standards.
Ethernet (LAN)	The ZED Box Mini series comes with one Gigabit Ethernet LAN port supporting 10/100/1000 BASE-T with a RJ45 connector.	Please refer to RJ45 Ethernet standards for 10/100/1000 BASE-T.
HDMI	The ZED Box Mini features an HDMI connector to display video with a maximum resolution of 3840x2160 @60Hz.	Please refer to the HDMI standards.

*ZED Box Mini Technical Drawings



Isometric view

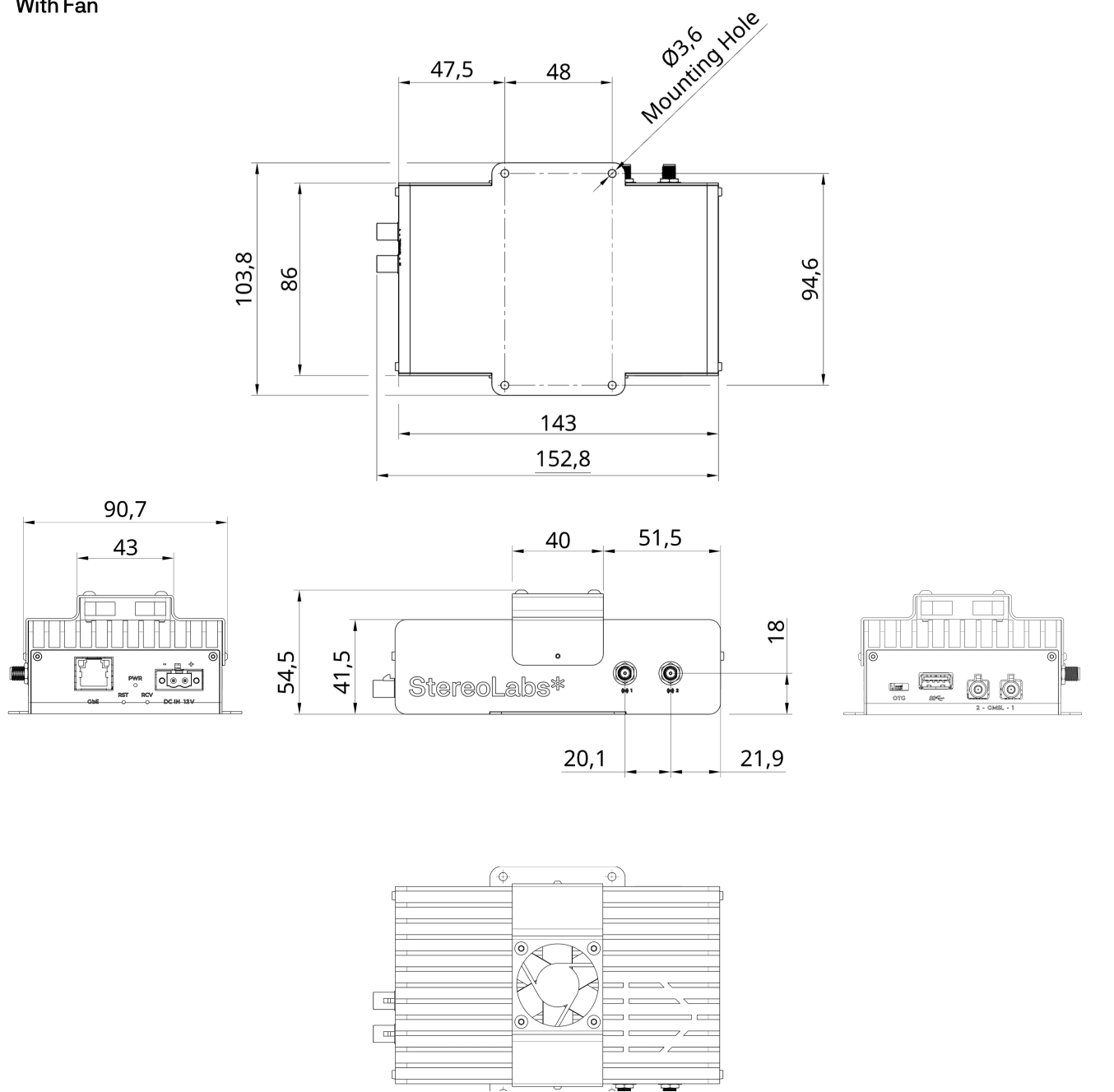
Rear view



*ZED Box Mini

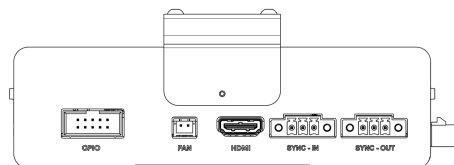
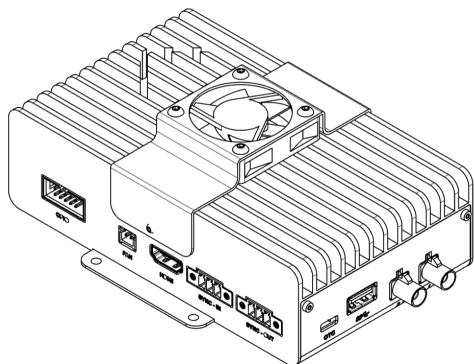
Technical Drawings

With Fan



Isometric view

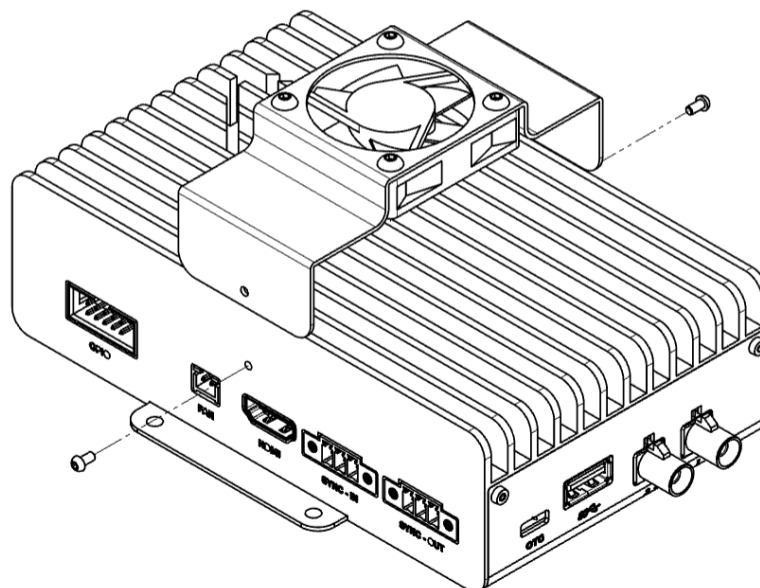
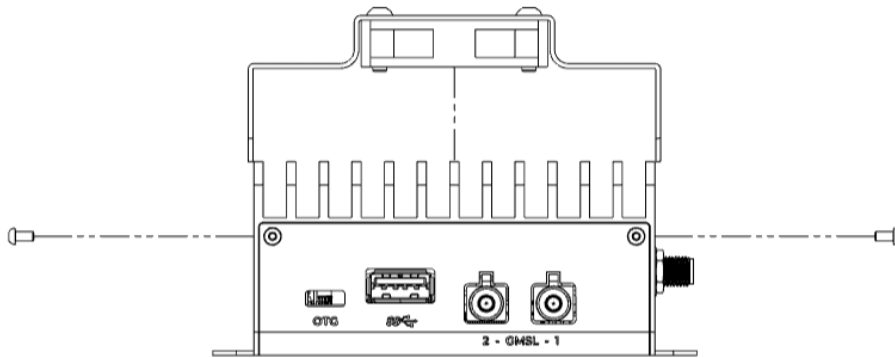
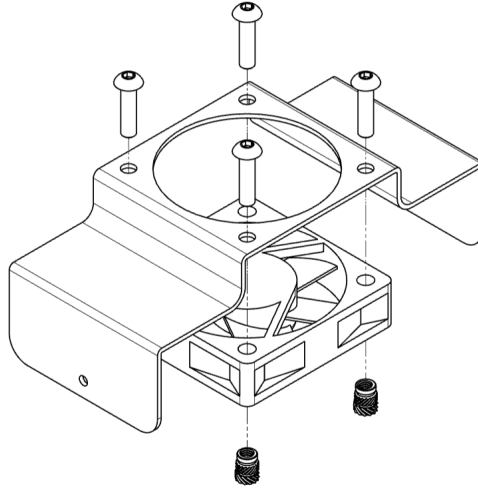
Rear view



*ZED Box Mini

Technical Drawings

Fan Installation



Mouser Electronics

Authorized Distributor

Click to View Pricing, Inventory, Delivery & Lifecycle Information:

[StereoLabs:](#)

[Fan Kit for ZED Box Mini](#)