



Part Number: DVI1722

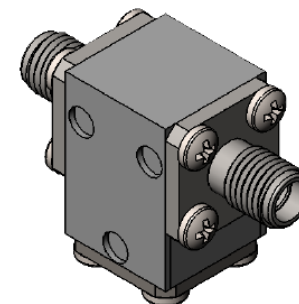
Electrical Specifications

Frequency Range (GHz):	17.3 – 22.0
Isolation (dB):	20 MIN
Insertion Loss (dB):	0.5 MAX
VSWR:	1.25:1 MIN
Forward Power (W):	10 AVG 30 PK
Reflective Power (W):	2 AVG

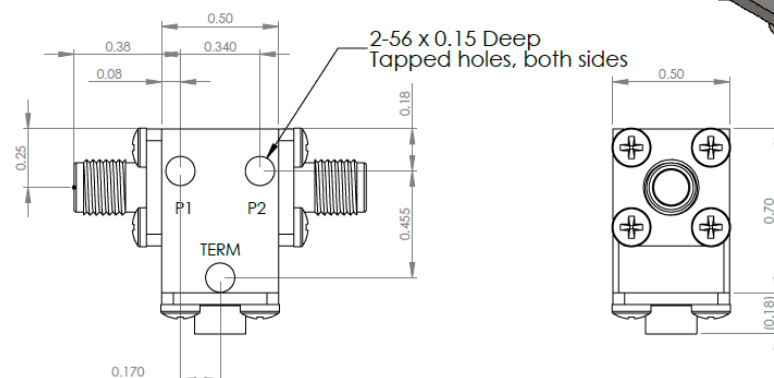
Mechanical/Environmental Specifications

Connector Type:	SMA
Connector Body:	Passivated stainless steel
Connector Pin:	Gold plated copper
Load Body:	Brass
Magnetic Shunt:	Nickel plated CRS
Operational Temp:	-20°C to +65°C
Weight (oz)	0.9 MAX
Outgassing	Low outgassing materials only

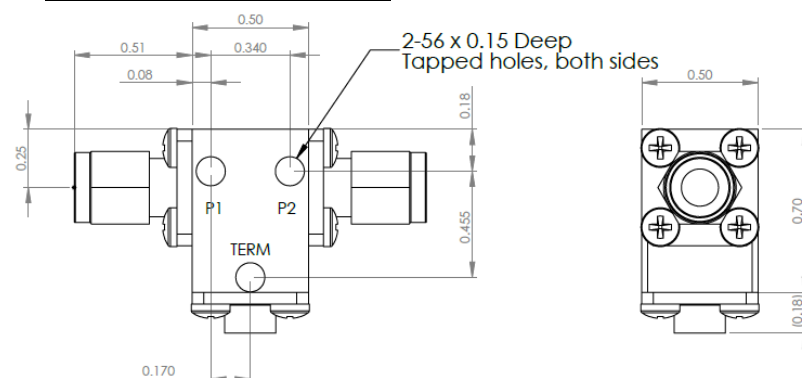
To customize test procedures or specifications to your requirements, please contact DiTom.



DVI1722 Dimensions



DVI1722-3 Dimensions



Dimensions are in inches
Tolerance

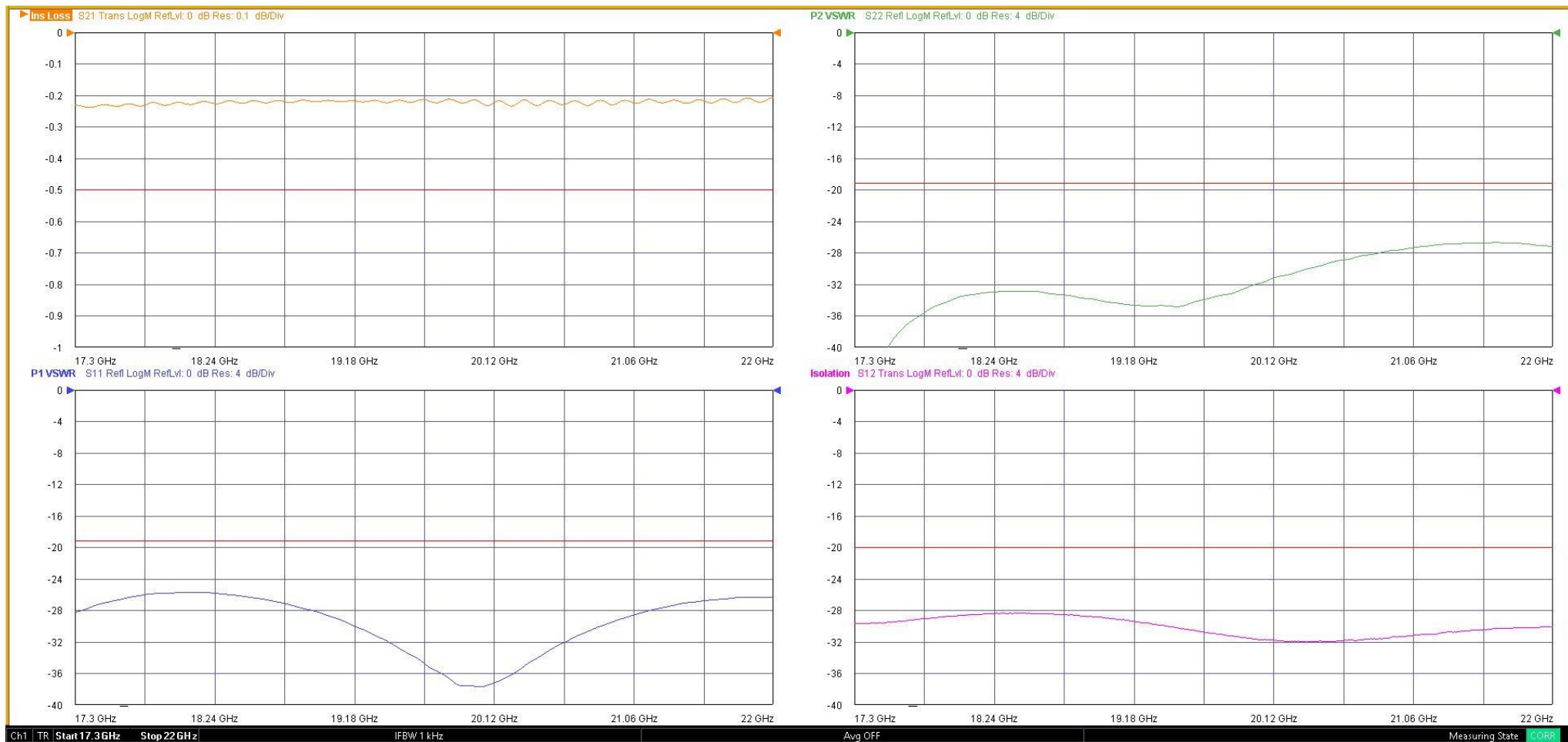
XX ±0.03
XXX ±0.010

Type of Device	PN Suffix	Connector Configuration Input / Output	PN Example
Single and Dual Junction Isolator, 2-Port Device Input / Output	N/A	Female / Female	DVI1722
	-1	Male / Female	DVI1722-1
	-2	Female / Male	DVI1722-2
	-3	Male / Male	DVI1722-3



MEASURED DATA

Part Number: DVI1722, +25°C



Mouser Electronics

Authorized Distributor

Click to View Pricing, Inventory, Delivery & Lifecycle Information:

[DiTom:](#)

[DVI1722](#) [DVI1722-1](#) [DVI1722-2](#) [DVI1722-3](#)