



## Part Number: D4I2060

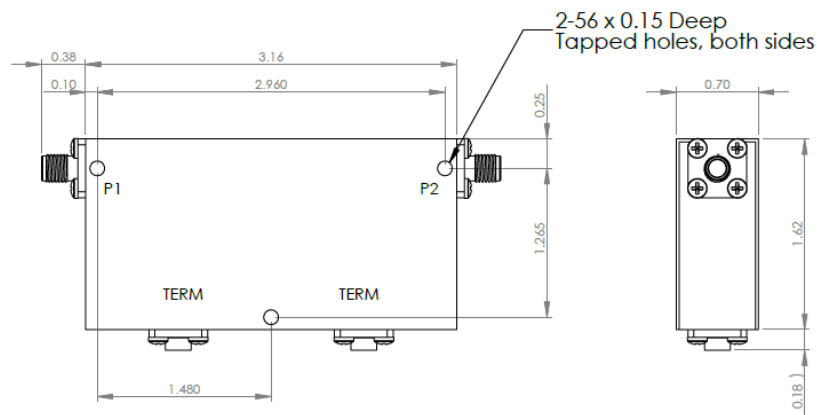
### Electrical Specifications

Frequency Range (GHz):	2.0 – 6.0
Isolation (dB):	28 MIN
Insertion Loss (dB):	1.6 MAX
VSWR:	1.5:1 MIN
Forward Power (W):	20 AVG 20 PK
Reflective Power (W):	2 AVG

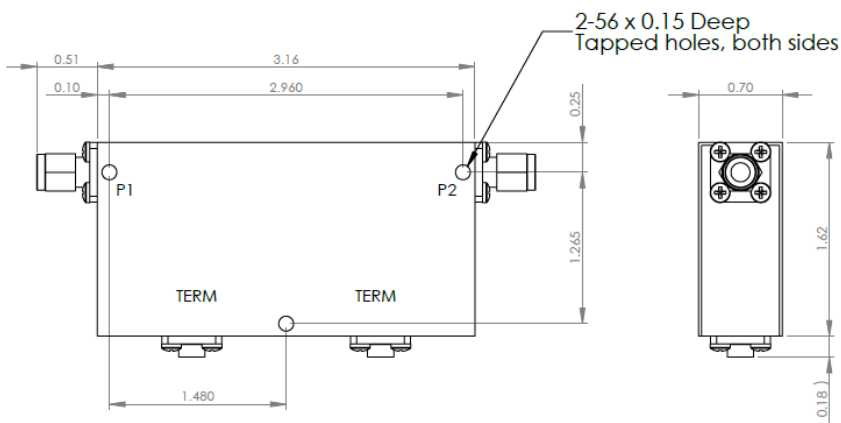
### Mechanical/Environmental Specifications

Connector Type:	SMA
Connector Body:	Passivated stainless steel
Connector Pin:	Gold plated copper
Load Body:	Brass
Magnetic Shunt:	Nickel plated CRS
Operational Temp:	0°C to +50°C
Weight (oz)	7.0 MAX

### D4I2060 Dimensions

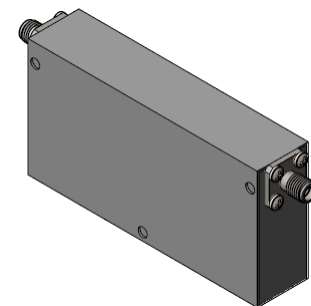


### D4I2060-3 Dimensions



Dimensions are in inches  
Tolerance  
XX ±0.03  
XXX ±0.010

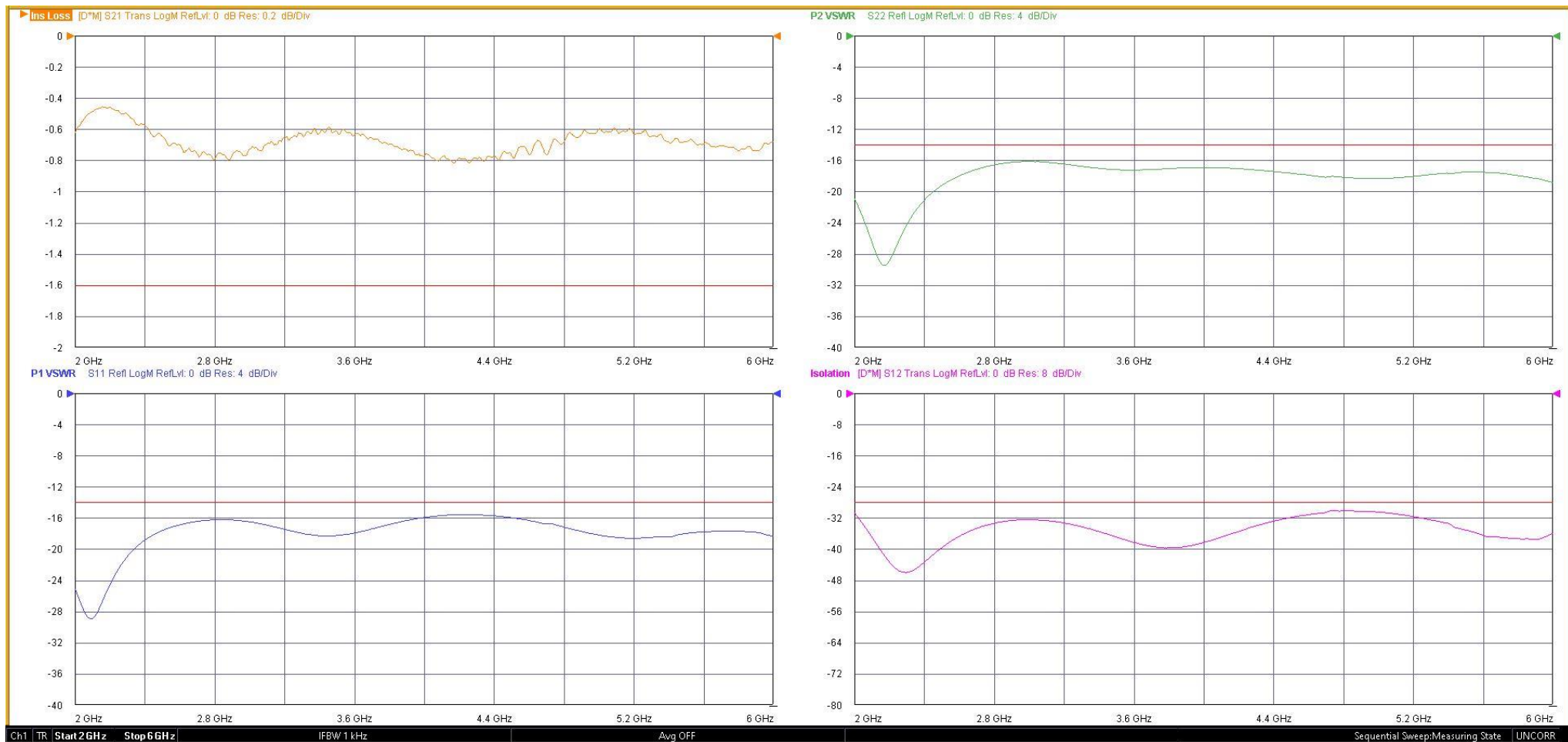
Type of Device	PN Suffix	Connector Configuration Input / Output	PN Example
Single and Dual Junction Isolator, 2-Port Device  Input / Output	N/A	Female / Female	D4I2060
	-1	Male / Female	D4I2060-1
	-2	Female / Male	D4I2060-2
	-3	Male / Male	D4I2060-3





## MEASURED DATA

Part Number: D4I2060, +25°C



# Mouser Electronics

Authorized Distributor

Click to View Pricing, Inventory, Delivery & Lifecycle Information:

[DiTom:](#)

[D4I2060](#) [D4I2060-1](#) [D4I2060-2](#) [D4I2060-3](#)