



## Part Number: D4I2021

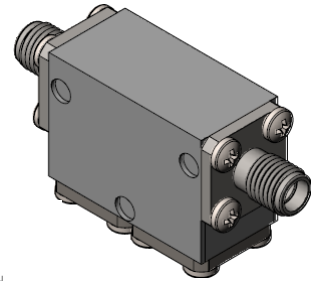
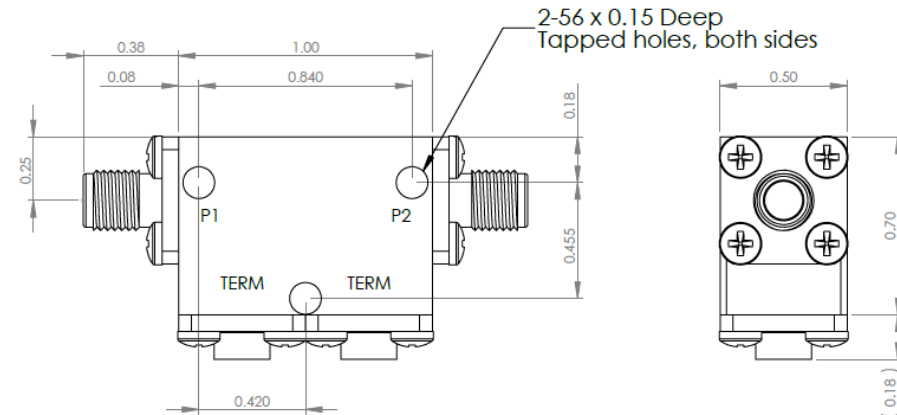
### Electrical Specifications

Frequency Range (GHz):	20.0 – 21.5
Isolation (dB):	44 MIN
Insertion Loss (dB):	0.8 MAX
VSWR:	1.2:1 MIN
Forward Power (W):	10 AVG 50 PK
Reflective Power (W):	2 AVG

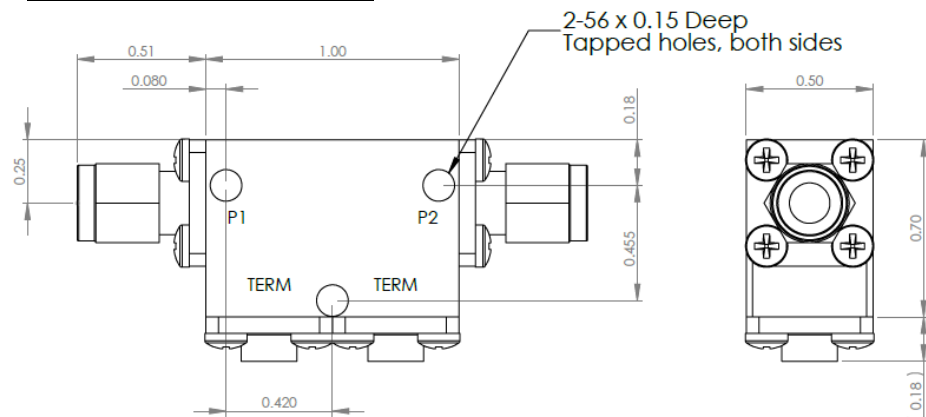
### Mechanical/Environmental Specifications

Connector Type:	SMA
Connector Body:	Passivated stainless steel
Connector Pin:	Gold plated copper
Load Body:	Brass
Magnetic Shunt:	Nickel plated CRS
Operational Temp:	-20°C to +65°C
Weight (oz)	2.0 MAX

### D4I2021 Dimensions



### D4I2021-3 Dimensions



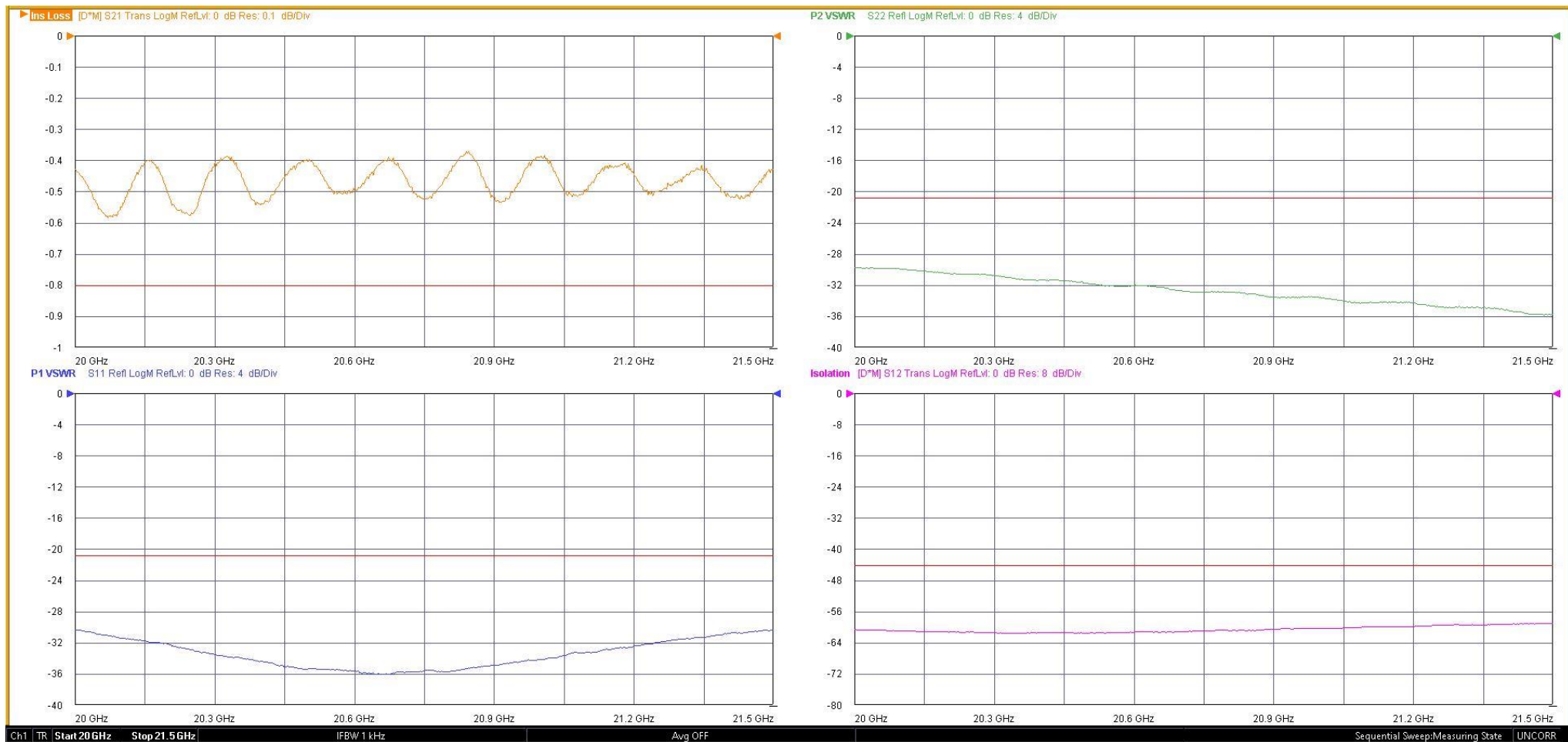
Dimensions are in inches  
Tolerance  
XX ±0.03  
XXX ±0.010

Type of Device	PN Suffix	Connector Configuration Input / Output	PN Example
Single and Dual Junction Isolator, 2-Port Device Input / Output	N/A	Female / Female	D4I2021
	-1	Male / Female	D4I2021-1
	-2	Female / Male	D4I2021-2
	-3	Male / Male	D4I2021-3



## MEASURED DATA

Part Number: D4I2021, +25°C



# Mouser Electronics

Authorized Distributor

Click to View Pricing, Inventory, Delivery & Lifecycle Information:

[DiTom:](#)

[D3I2021](#) [D3I2021-1](#) [D3I2021-2](#) [D3I2021-3](#) [D4I2021](#) [D4I2021-1](#) [D4I2021-2](#) [D4I2021-3](#)