



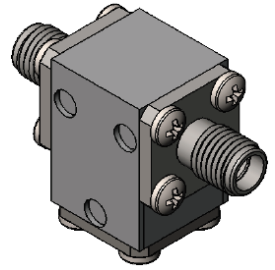
## Part Number: D3I2428

### Electrical Specifications

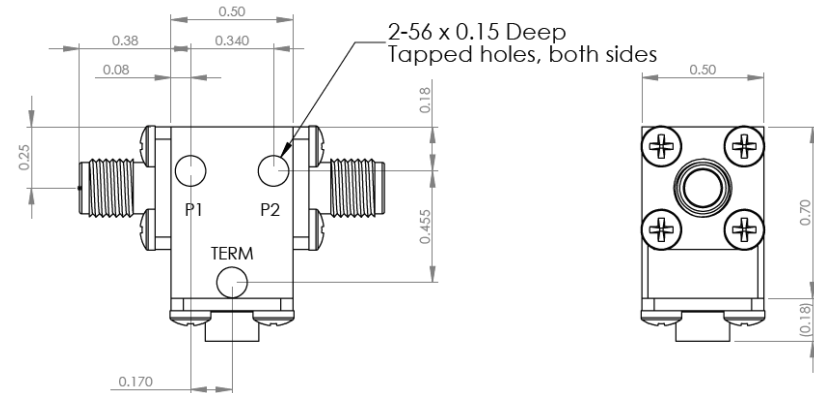
Frequency Range (GHz):	24.0 – 28.0
Isolation (dB):	20 MIN
Insertion Loss (dB):	0.5 MAX
VSWR:	1.25:1 MIN
Forward Power (W):	5 AVG 30 PK
Reflective Power (W):	2 AVG

### Mechanical/Environmental Specifications

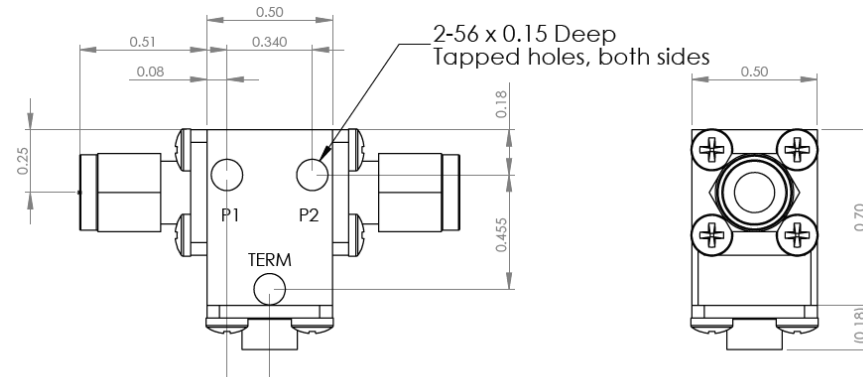
Connector Type:	SMA
Connector Body:	Passivated stainless steel
Connector Pin:	Gold plated copper
Load Body:	Brass
Magnetic Shunt:	Nickel plated CRS
Operational Temp:	-20°C to +65°C
Weight (oz)	0.9 MAX



### D3I2428 Dimensions



### D3I2428-3 Dimensions



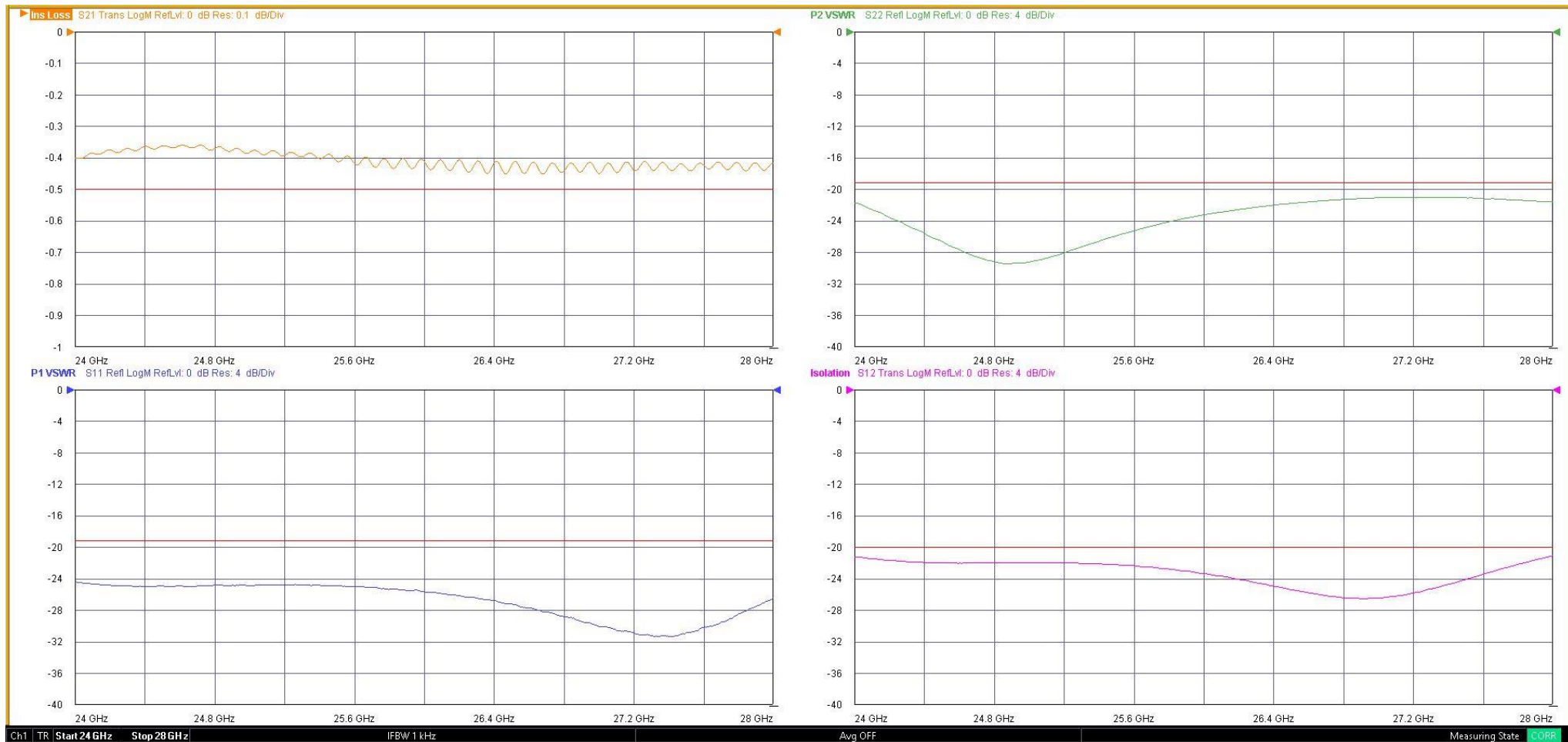
Dimensions are in inches  
Tolerance  
XX ±0.03  
XXX ±0.010

Type of Device	PN Suffix	Connector Configuration Input / Output	PN Example
Single and Dual Junction Isolator, 2-Port Device  Input / Output	N/A	Female / Female	D3I2428
	-1	Male / Female	D3I2428-1
	-2	Female / Male	D3I2428-2
	-3	Male / Male	D3I2428-3



## MEASURED DATA

Part Number: D3I2428, +25°C



# Mouser Electronics

Authorized Distributor

Click to View Pricing, Inventory, Delivery & Lifecycle Information:

[DiTom:](#)

[D4I2004](#) [D4I2004-1](#) [D4I2004-2](#) [D4I2004-3](#)