



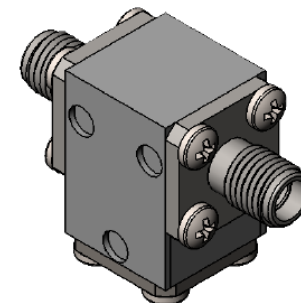
Part Number: D3I2023

Electrical Specifications

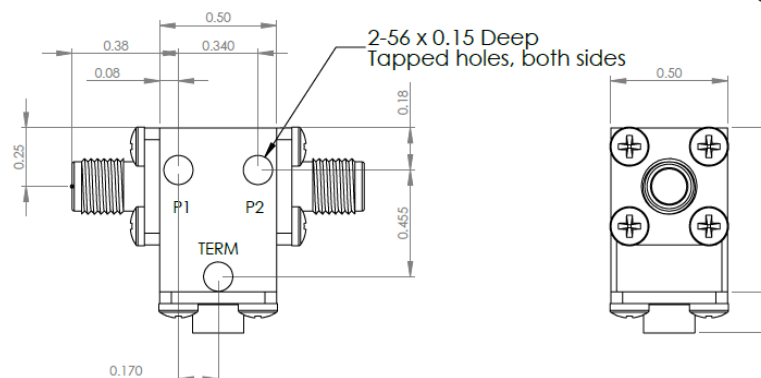
Frequency Range (GHz):	20.0 – 23.0
Isolation (dB):	22 MIN
Insertion Loss (dB):	0.4 MAX
VSWR:	1.2:1 MIN
Forward Power (W):	10 AVG 30 PK
Reflective Power (W):	2 AVG

Mechanical/Environmental Specifications

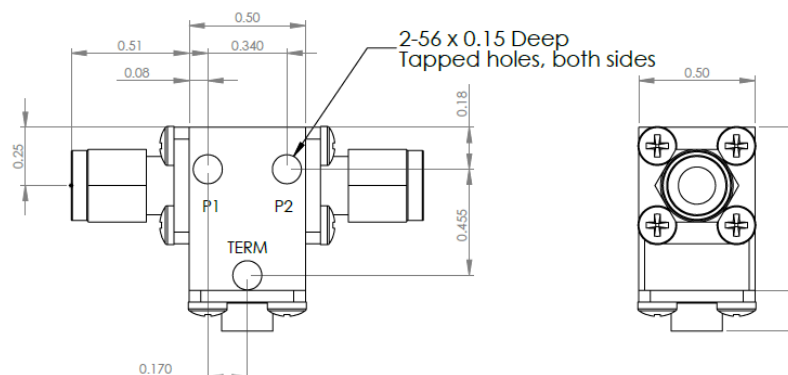
Connector Type:	SMA
Connector Body:	Passivated stainless steel
Connector Pin:	Gold plated copper
Load Body:	Brass
Magnetic Shunt:	Nickel plated CRS
Operational Temp:	-20°C to +65°C
Weight (oz)	0.9 MAX



D3I2023 Dimensions



D3I2023-3 Dimensions



Dimensions are in inches
Tolerance

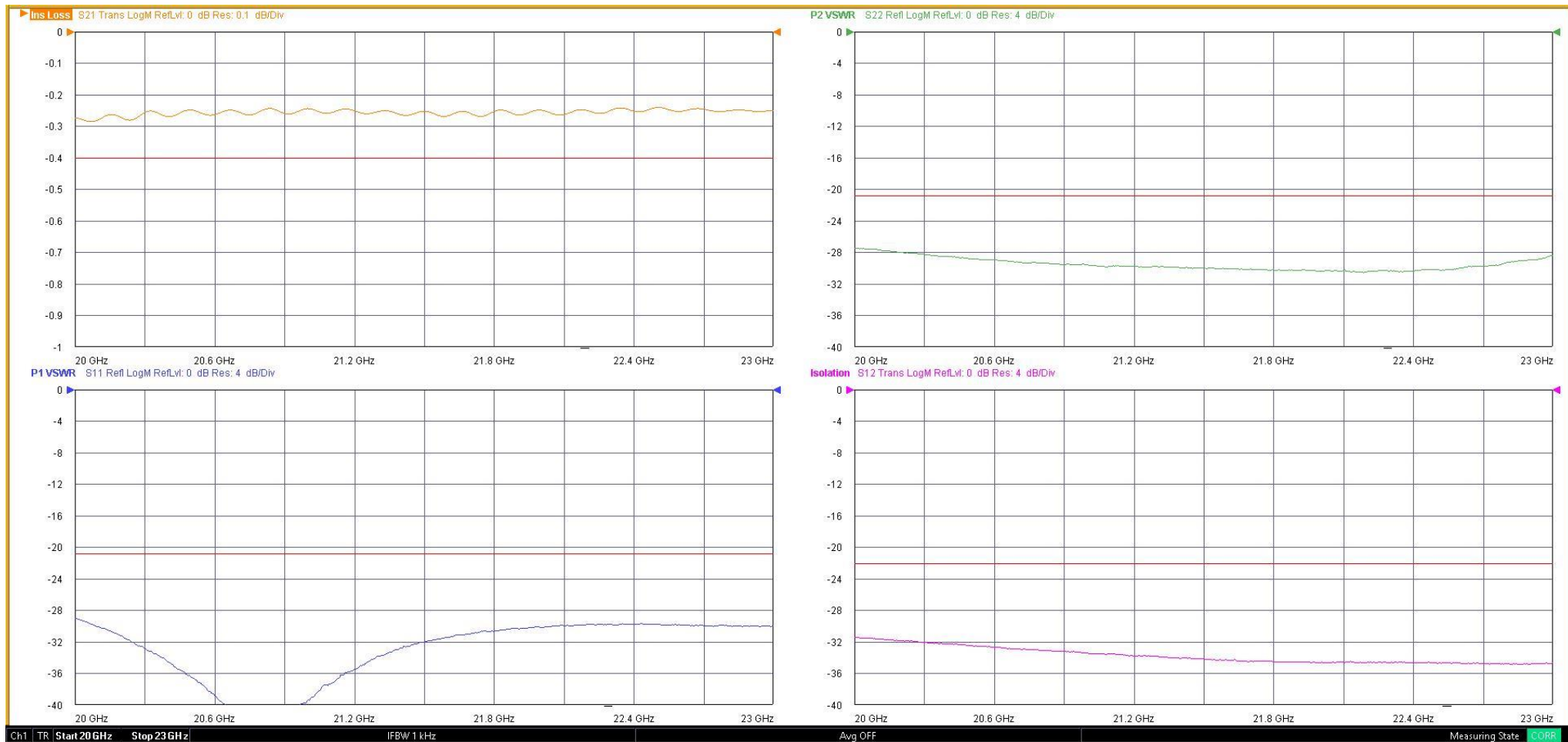
XX ±0.03
XXX ±0.010

Type of Device	PN Suffix	Connector Configuration Input / Output	PN Example
Single and Dual Junction Isolator, 2-Port Device Input / Output	N/A	Female / Female	D3I2023
	-1	Male / Female	D3I2023-1
	-2	Female / Male	D3I2023-2
	-3	Male / Male	D3I2023-3



MEASURED DATA

Part Number: D3I2023, +25°C



Mouser Electronics

Authorized Distributor

Click to View Pricing, Inventory, Delivery & Lifecycle Information:

[DiTom:](#)

[D4I2021](#) [D4I2021-1](#) [D4I2021-2](#) [D4I2021-3](#)