



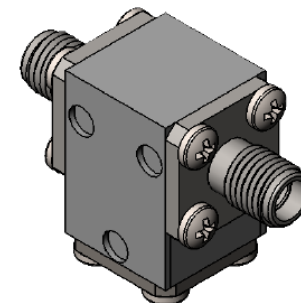
Part Number: D3I1415

Electrical Specifications

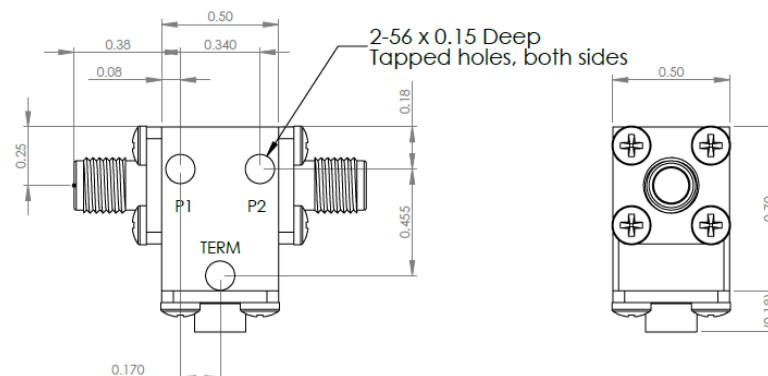
Frequency Range (GHz):	14.0 – 15.0
Isolation (dB):	23 MIN
Insertion Loss (dB):	0.3 MAX
VSWR:	1.2:1 MIN
Forward Power (W):	10 AVG 50 PK
Reflective Power (W):	2 AVG

Mechanical/Environmental Specifications

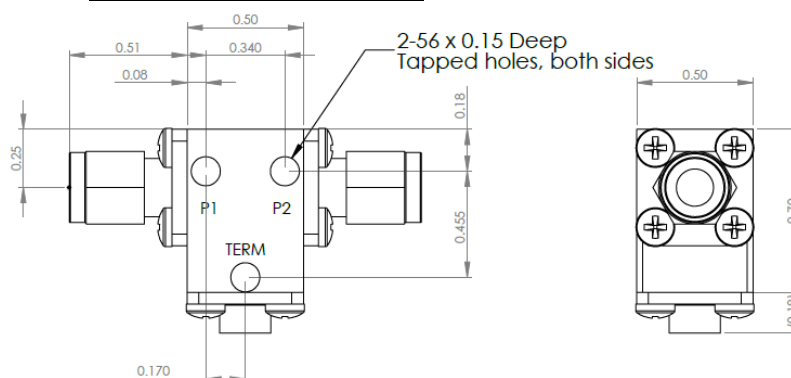
Connector Type:	SMA
Connector Body:	Passivated stainless steel
Connector Pin:	Gold plated copper
Load Body:	Brass
Magnetic Shunt:	Nickel plated CRS
Operational Temp:	-30°C to +65°C
Weight (oz)	0.9 MAX



D3I1415 Dimensions



D3I1415-3 Dimensions



Dimensions are in inches
Tolerance

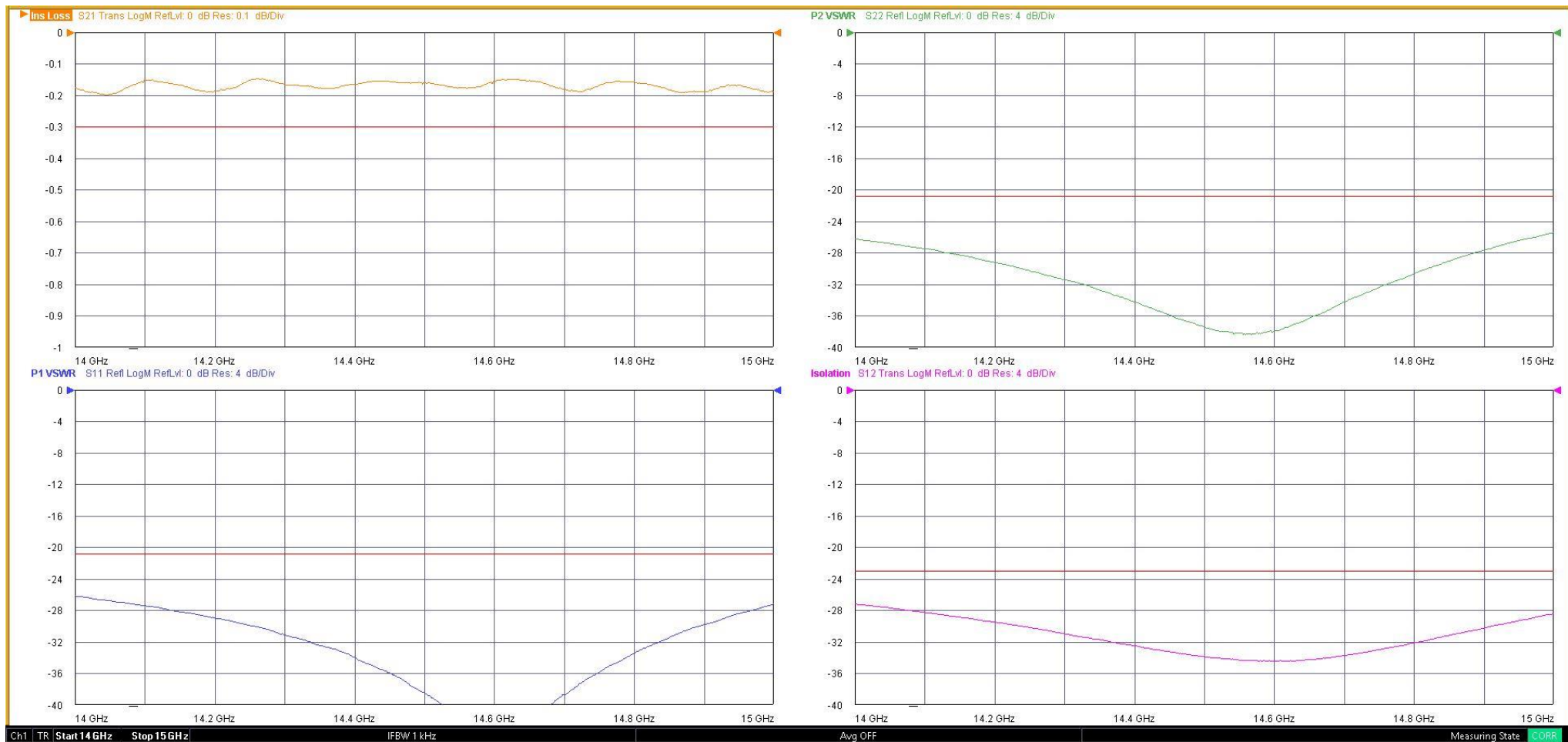
XX ±0.03
XXX ±0.010

Type of Device	PN Suffix	Connector Configuration Input / Output	PN Example
Single and Dual Junction Isolator, 2-Port Device Input / Output	N/A	Female / Female	D3I1415
	-1	Male / Female	D3I1415-1
	-2	Female / Male	D3I1415-2
	-3	Male / Male	D3I1415-3



MEASURED DATA

Part Number: D3I14I5, +25°C



Mouser Electronics

Authorized Distributor

Click to View Pricing, Inventory, Delivery & Lifecycle Information:

[DiTom:](#)

[D3I1415](#) [D3I1415-1](#) [D3I1415-2](#) [D3I1415-3](#)