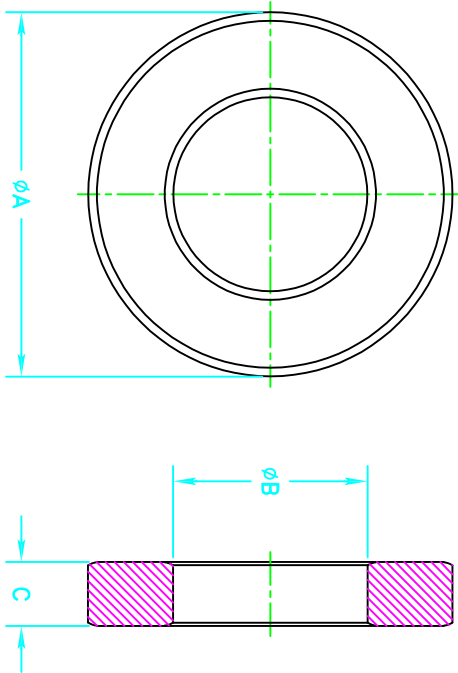


NOTES:

- 1 - BURNISH TO BREAK SHARP EDGES.
- 2 - PACKAGING: To Be Determined

| SIZE | PART NO.   | REV. |
|------|------------|------|
| B    | 5952011101 | 0    |

UNCONTROLLED COPY WHEN PRINTED



A 70.90/73.90 37.85/39.35 12.30/13.10  
2.850 1.520 .500

| ELECTRICAL SPECIFICATIONS |           |             |             |           |                                   |  |
|---------------------------|-----------|-------------|-------------|-----------|-----------------------------------|--|
| $\Sigma L/A(mm^{-1})$     | $l_e(mm)$ | $A_e(mm^2)$ | $V_e(mm^3)$ | $L_o(nH)$ | $A_L(nH)$<br>@ 10 kHz<br><10gauss | $\tan \delta/\mu_i$<br>@ 1 MHz<br>1gauss |
| 0.787                     | 163       | 208         | 33900       | 1.597     | 400±25%                           | ≤ 125X10E-6                              |

| REV. | ECN | DESCRIPTION | DRT | DATE |
|------|-----|-------------|-----|------|
|      |     |             |     |      |
|      |     |             |     |      |
|      |     |             |     |      |
|      |     |             |     |      |

REVISIONS

| APPLICABLE SPECS                      |  | DRAWING CLASS      | 1034 | FAIR-RITE PRODUCTS CORP. |  |               |  |
|---------------------------------------|--|--------------------|------|--------------------------|--|---------------|--|
| Tolerances Unless Otherwise Indicated |  | MATERIAL           |      | TOROID                   |  |               |  |
| 2PL 3PL FRACT ANGLE                   |  | FR# 52             |      | TITLE                    |  |               |  |
| FINISH                                |  | DRAWN BY D. SCHULZ |      | DATE 06-20-2018          |  | SIZE PART NO. |  |
|                                       |  | CHKD BY            |      |                          |  | B 5952011101  |  |
|                                       |  | APPRVD BY          |      |                          |  | SCALE NONE    |  |
|                                       |  |                    |      |                          |  | SHEET 1 of 1  |  |
|                                       |  |                    |      |                          |  | REV. 0        |  |

BOLD DIMENSIONS ARE IN MILLIMETERS\*\*, LIGHT DIMENSIONS ARE IN INCHES.

ADDED TO SYSTEM PER ECN# C-7204

# Mouser Electronics

Authorized Distributor

Click to View Pricing, Inventory, Delivery & Lifecycle Information:

Fair-Rite:

5952011101