

Energy Harvester SPGA Series

No power supply, battery or maintenance required.
Power generated with a low-force push.

The SPGA Series Energy Harvester is a compact power-generating device employing electromagnetic induction to generate power with each push or release. Combined with low-power wireless technology, the device can function as a switch. It can be installed away from a main board, for example, in places where connection to a power source, or battery replacement, is difficult, and is ideal particularly for frequently operated equipment.



SPGA Series

Features

- Long operating life of 1 million cycles
- Excellent feel achieved with operating force of 6±1.5N
- Compact dimensions (17.5 × 23 × 17.9mm)

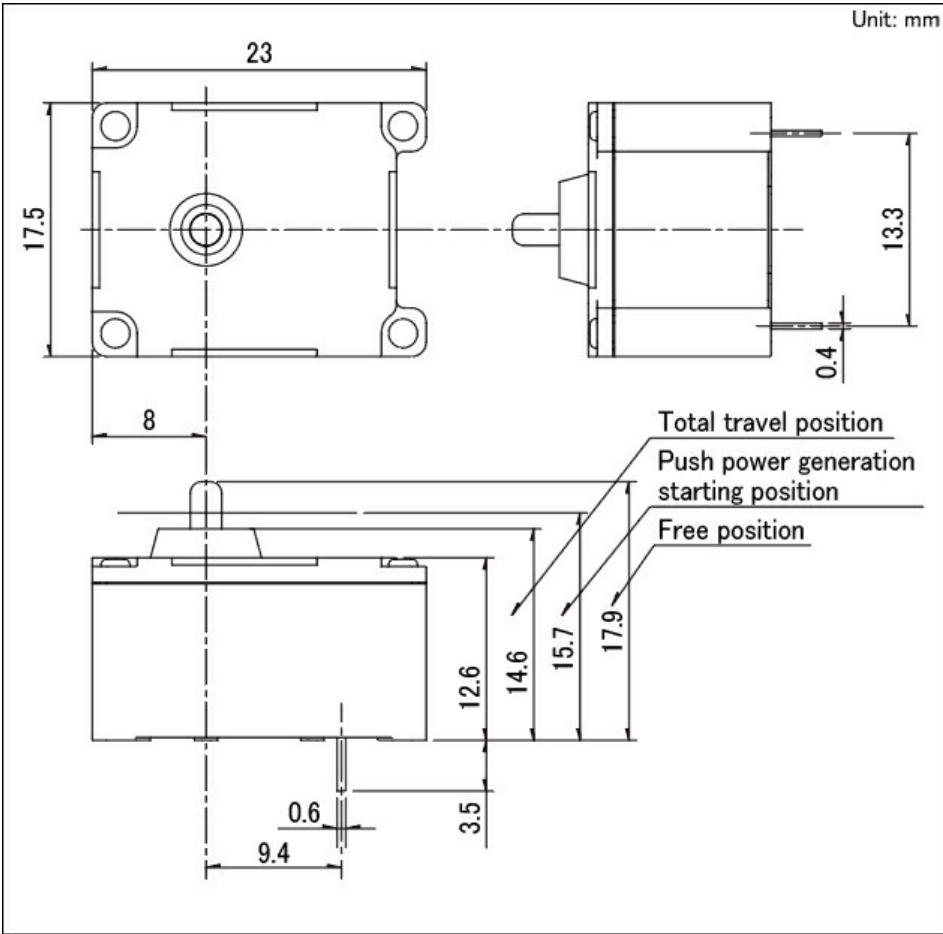
Applications

- Equipment with batteries in danger of going flat at the wrong time
- Operation, position sensing in places where circuitry or wiring is complicated
- Can be retrofitted to existing equipment as wiring not required

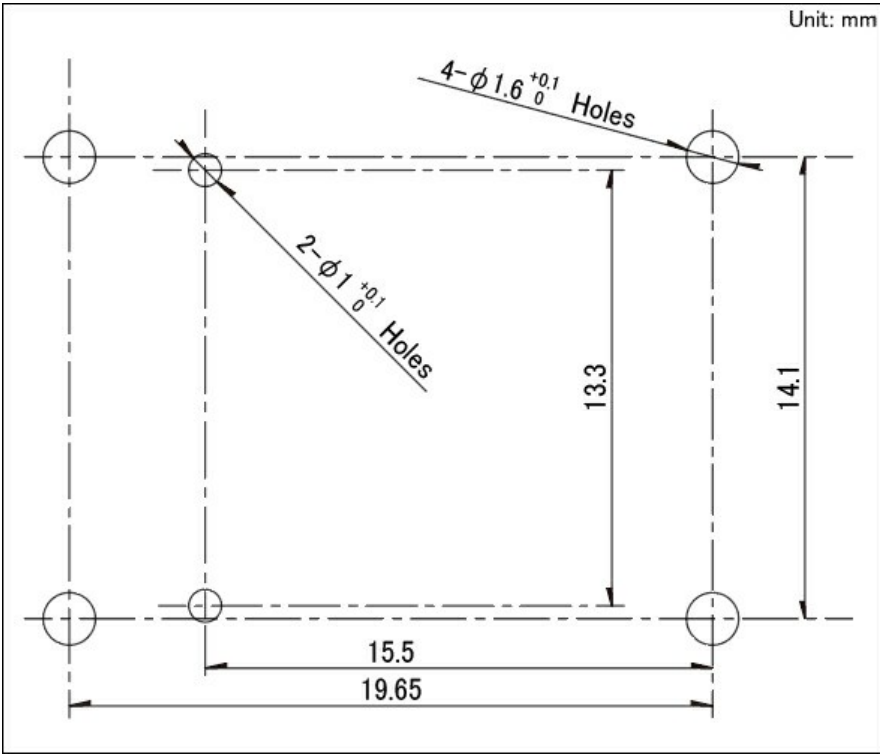
Items			Specifications
Part number			SPGA110100
Dimensions (W×D×H)			17.5×23×17.9mm
Power generation			170μJ (for each operation)
Operating force			6N±1.5N
Travel			3.3mm
Operation			Push
Poles			1
Terminal type			For PC board
Operating temperature range			-20°C to +70°C
Mechanical performance	Actuator strength	Operating direction	35N
		Perpendicular direction	5N
Durability	Operating life		1,000,000 cycles
Environmental performance	Cold		-40°C 96h
	Dry heat		85°C 96h
	Damp heat		60°C, 90 ~ 95%RH 96h
3D CAD (STEP)			Download
Certificate of Compliance to RoHS regulations			Download

※ Please contact an Alps Alpine sales representative about wireless systems, auxiliary circuits or other inquiries.

Dimensions



Mounting Hole Dimensions



Packing Specifications

Tray		
Number of packages (pcs.)	1 case / Japan	320
	1 case / export packing	320
Export package measurements (mm)		360×270×230

Soldering Conditions

Reference for Hand Soldering	
Soldering temperature	350±5°C
Soldering time	3s max.

Products

- Products News
- Search by Application
- Search by Specs
- Product Basics
- PDF Catalog
- 3D CAD/RoHS Directives Support
- Sensors
- Switches
- TACT Switch™
- Contactsheet™
- Encoders
- Potentiometers
- Multi Control Devices
- Connectors
- Aspherical Glass Lens
- Communication Modules
- Power Inductors
- Current Sensor
- Toroidal Coil
- Touch Input Devices
- Actuators
- HAPTIC™ Reactor
- Printer
- Deleted Products

Alps Company Info

- Top Message
- Global Network
- Overview of Business Operations
- Technology
- News Releases

News Releases

- 2019
- 2018
- 2017
- 2016
- 2015

CSR Environment

- Top Message
- Alps Business Approach
- Alps Philosophy
- Relations with Customers
- Environmental Preservation
- Relations with Employees
- Relations with Suppliers
- Fair Management
- Social Contribution
- CSR Management
- CSR Library

Investor Relations

- Consolidated Financial Statements
- IR Calendar
- IR Library
- Stock Information
- General Meeting of Shareholders
- Careers
- Opportunities and Jobs
- IAP - Job offer
- International Associates Program
- FAQ

About ALPS

- History
- Alps Company (former Alps Electric) by Video

Other

- Terms of Use
- Privacy Policy
- About the trademarks
- Contact Us

Mouser Electronics

Authorized Distributor

Click to View Pricing, Inventory, Delivery & Lifecycle Information:

[Alps Alpine:](#)

[SPGA110100](#)